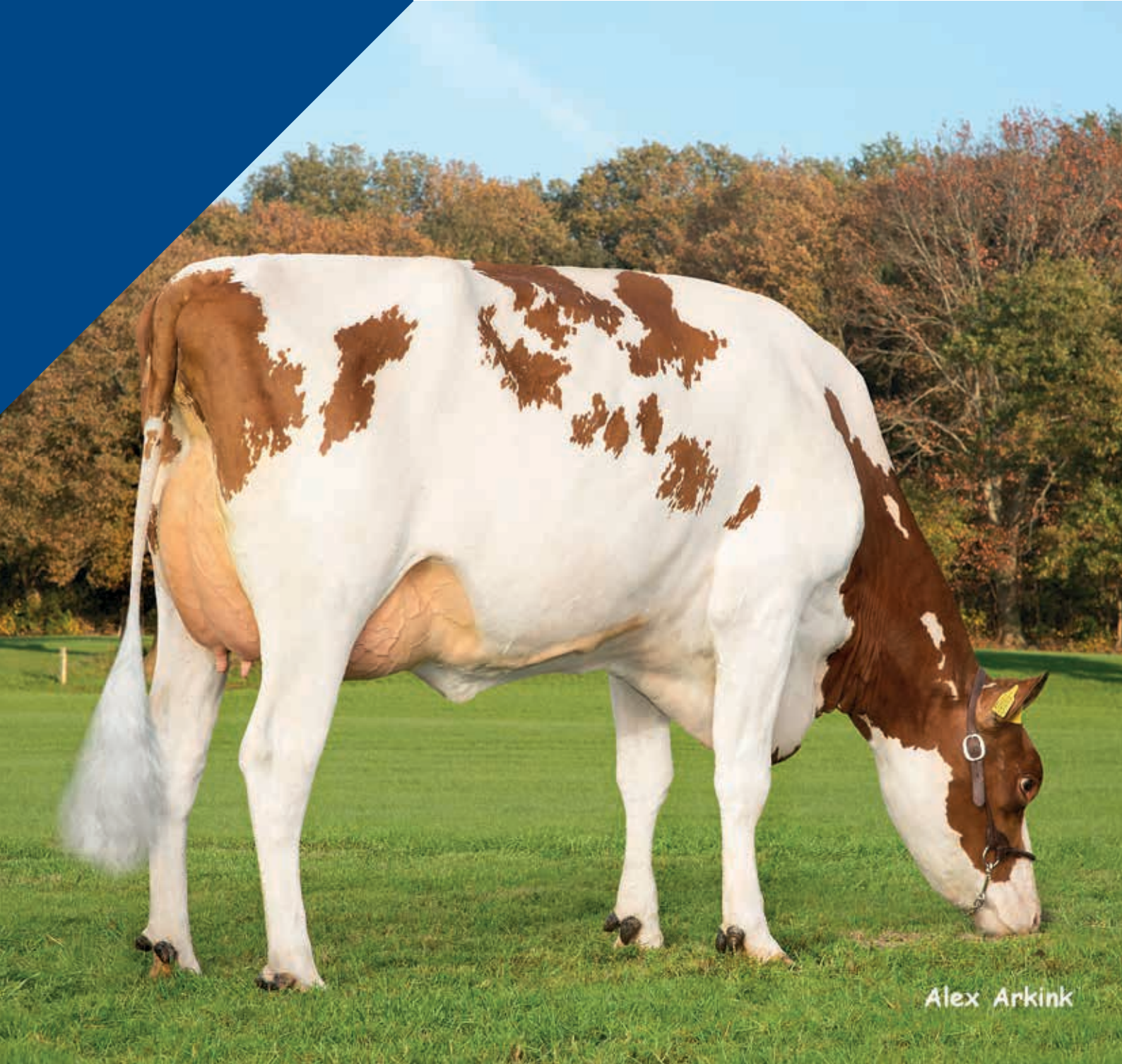


Dairy guide

Holstein

December
2023



Alex Arkink

HERD- OPTIMIZER

Genomic tes
next generat

Now available
Online
application!



BETTER COWS > BETTER LIFE

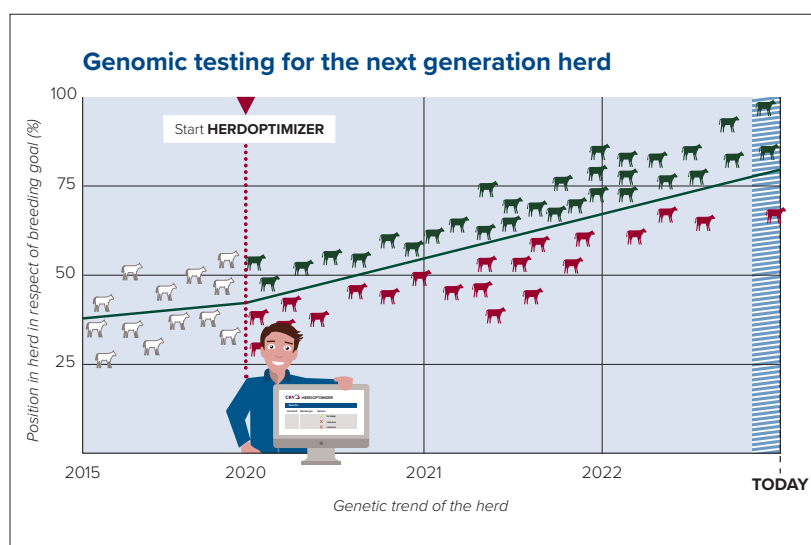


ting for the ion herd



HerdOptimizer is a tool to gain easy insight in the genetic potential of your herd. This customized breeding concept and management tool contains female genotyping and the possibility to personalize your mating advice using SireMatch. The online application is 24/7 accessible on any mobile device.

- ▶ **24/7 access to genomic data of your animals**
- ▶ **Ranking on your personalized breeding objective**
- ▶ **Fast genetic progress through integration with SireMatch**





Flagstone (s. Topstone)



Grand D Fay (s. Reflector) grand dam of Flagstone



Delta Fay VG89 (s. Shamrock) great grand dam of Flagstone

HB N°: **629932290**
HO: **7363**

KAPPA CASEIN: **AB**
BETA CASEIN: **A2A2**

PRODUCTION

	UK Holstein Interbull, December 2023	Daughters: 00 Herds: 00 Rel.: 73%			
Milk Kg	Fat Kg	Protein Kg	Fat %	Protein %	PLI
780	40.9	32.3	0.11	0.07	£739
					Rel 67%

	Dutch Holstein Interbull, December 2023				
Milk Kg	Fat Kg	Protein Kg	Fat %	Protein %	NVI
1532	107	69	0.41	0.15	€317

Calving ease	SCS	Persistency	Milking speed	Temperament	Ketosis
101	103	111	103	92	102

CRV HEALTH
+4%

Fertility	100
Hoof health	105
Udder health	103

CRV EFFICIENCY
+19%

INET (€)	528
Feed Efficiency	111
Longevity (days)	358

INSIRE

- Milk transmitter
- Extremely kgs fat and protein
- Excellent udders
- Healthy udders
- Outcross pedigree

TYPE

Dutch breeding values, December 2023

	92	100	104	108	112	
Frame						102
Dairy Strength						100
Udder						107
Feet & legs						107
Total score						108

Stature		Tall	101
Chest width		Wide	97
Body depth		Deep	101
Angularity		Open	105
Condition score		Fat	93
Rump angle		Sloped	98
Rump width		Wide	103
Rear legs rear view		Straight	106
Rear legs side view		Curved	100
Foot angle		Steep	102
Locomotion		Strong	107
Fore udder attachment		Strong	106
Front teat placement		Narrow	101
Teat length		Long	99
Udder depth		Shallow	105
Rear udder height		High	107
Rear teat placement		Narrow	105
Udder balance		Higher hind	102
Central ligament		Strong	104



Woody (s. Ranger)



Hedra Alumette 1407 P VG86 (s. Woody)



Delta Lush VG88 (s. Woody)

HB N°: **63965020507** KAPPA CASEIN: **AB**
 HO: **6139** BETA CASEIN: **A2A2**

PRODUCTION

AHDB UK Holstein Interbull, December 2023 Daughters: 1,470 | Herds: 518 | Rel.: 81%

Milk Kg	Fat Kg	Protein Kg	Fat %	Protein %	PLI
776	32.4	29.4	0.01	0.04	€509
					Rel 77%

Dutch Holstein Interbull, December 2023

Milk Kg	Fat Kg	Protein Kg	Fat %	Protein %	NVI
2126	93	76	0.03	0.02	€299

Calving ease	SCS	Persistency	Milking speed	Temperament	Ketosis
102	110	104	96	101	98

CRV HEALTH +3%

Fertility		92
Hoof health		109
Udder health		108

CRV EFFICIENCY +16%

INET (€)		539
Feed Efficiency		109
Longevity (days)		401

Daughter proven



- Top for production
- Very good conformation
- Healthy udders and hoofs
- Very efficient daughters

Dutch breeding values, December 2023
 Daughters: 737 | Herds: 303

TYPE

	92	100	104	108	112	
Frame						104
Dairy Strength						106
Udder						110
Feet & legs						109
Total score						112

Stature		Tall	104
Chest width		Wide	104
Body depth		Deep	109
Angularity		Open	115
Condition score		Fat	96
Rump angle		Sloped	100
Rump width		Wide	101
Rear legs rear view		Straight	107
Rear legs side view		Curved	98
Foot angle		Steep	103
Locomotion		Strong	109
Fore udder attachment		Strong	108
Front teat placement		Narrow	106
Teat length		Long	100
Udder depth		Shallow	104
Rear udder height		High	110
Rear teat placement		Narrow	100
Udder balance		Higher hind	106
Central ligament		Strong	101

Delta Boreso

Rioaveso x Delta Floris x Delta Magister



Boreso (s. Rioaveso)



Delta Bodyl VG86 (s. Floris) dam of Boreso



De Wijde Blik Delta Bea VG86 (s. Fever) 4th dam of Boreso

HB N°: **672369869**
HO: **7577**

KAPPA CASEIN: **AA**
BETA CASEIN: **A2A2**

PRODUCTION

AHDB UK Holstein Interbull, December 2023	Daughters: 00 Herds: 00 Rel.: 73%				
Milk Kg	Fat Kg	Protein Kg	Fat %	Protein %	PLI
389	19.0	19.4	0.04	0.08	£541
					Rel 66%

Dutch Holstein Interbull, December 2023					
Milk Kg	Fat Kg	Protein Kg	Fat %	Protein %	NVI
1063	80	53	0.35	0.16	€264

Calving ease	SCS	Persistency	Milking speed	Temperament	Ketosis
100	105	107	100	101	100

CRV HEALTH
+4%

Fertility	█	102
Hoof health	██████████	108
Udder health	█	104

CRV EFFICIENCY
+9%

INET (€)	██████████	400
Feed Efficiency	█	102
Longevity (days)	██████████	492

INSIRE

- Very allround bull
- Medium sized cows
- Outcross pedigree
- Persistent producers

TYPE

Dutch breeding values, December 2023

	92	100	104	108	112	
Frame						108
Dairy Strength						106
Udder						108
Feet & legs						106
Total score						111

Stature						Tall	104
Chest width						Wide	105
Body depth						Deep	104
Angularity						Open	105
Condition score						Fat	102
Rump angle						Sloped	103
Rump width						Wide	106
Rear legs rear view						Straight	105
Rear legs side view						Curved	103
Foot angle						Steep	96
Locomotion						Strong	107
Fore udder attachment						Strong	107
Front teat placement						Narrow	106
Teat length						Long	101
Udder depth						Shallow	105
Rear udder height						High	108
Rear teat placement						Narrow	106
Udder balance						Higher hind	102
Central ligament						Strong	105

Delta Fast Lane NEW

Peak Remington x Delta Lustrum x Westcoast Kerrigan



Delta Fast Lane



Wilder Marta, MGGGD of Fast Lane

HB N^o: **542034572** KAPPA CASEIN: **AB**
 HO: **7902** BETA CASEIN: **A1A2**

PRODUCTION



UK Holstein
 Interbull, December 2023 Daughters: 00 | Herds: 00 | Rel.: 73%

Milk Kg	Fat Kg	Protein Kg	Fat %	Protein %	PLI
362	23.6	19.7	0.10	0.09	€622
					Rel 67%

■ Dutch Holstein
 Interbull, December 2023

Milk Kg	Fat Kg	Protein Kg	Fat %	Protein %	NVI
357	44	27	0.31	0.16	€214

Calving ease	SCS	Persistency	Milking speed	Temperament	Ketosis
103	102	101	101	101	104

CRV HEALTH
+6%

Fertility	<div style="width: 100%; height: 10px; background-color: red;"></div>	105
Hoof health	<div style="width: 100%; height: 10px; background-color: red;"></div>	107
Udder health	<div style="width: 100%; height: 10px; background-color: red;"></div>	101

CRV EFFICIENCY
+8%

INET (€)	<div style="width: 100%; height: 10px; background-color: blue;"></div>	208
Feed Efficiency	<div style="width: 100%; height: 10px; background-color: blue;"></div>	102
Longevity (days)	<div style="width: 100%; height: 10px; background-color: blue;"></div>	471

INSIRE



- Medium sized cows
- High components
- Great Feet & Legs
- Fertile daughters

TYPE

Dutch breeding values, December 2023

	92	100	104	108	112	
Frame						103
Dairy Strength						105
Udder						107
Feet & legs						108
Total score						110

Stature						98
Chest width						103
Body depth						101
Angularity						103
Condition score						102
Rump angle						97
Rump width						103
Rear legs rear view						107
Rear legs side view						98
Foot angle						97
Locomotion						110
Fore udder attachment						105
Front teat placement						102
Teat length						102
Udder depth						105
Rear udder height						110
Rear teat placement						104
Udder balance						109
Central ligament						102

Delta Podium NEW

Delta Tornado x Double W Ranger x VH Bube Bernell



Delta Podium



Delta Saar (s. Danno), MGGD to Podium



Delta Swing (s. Bernell), MGD to Podium

HB N°: **578126331**
HO: **7802**

KAPPA CASEIN: **BB**
BETA CASEIN: **A1A2**

INSIRE



PRODUCTION

AHDB UK Holstein Interbull, December 2023	Daughters: 00 Herds: 00 Rel.: 73%				
Milk Kg	Fat Kg	Protein Kg	Fat %	Protein %	PLI
366	16.9	21.0	0.03	0.10	£597
					Rel 67%

Dutch Holstein Interbull, December 2023					
Milk Kg	Fat Kg	Protein Kg	Fat %	Protein %	NVI
407	28	30	0.12	0.17	€229

Calving ease	SCS	Persistency	Milking speed	Temperament	Ketosis
106	103	104	100	103	105

CRV HEALTH
+8%

Fertility	[Progress bar]	105
Hoof health	[Progress bar]	109
Udder health	[Progress bar]	104

CRV EFFICIENCY
+6%

INET (€)	[Progress bar]	187
Feed Efficiency	[Progress bar]	101
Longevity (days)	[Progress bar]	439

- **Awesome type**
- **Great health traits**
- **Fertility**
- **Calving ease**

TYPE

Dutch breeding values, December 2023

	92	100	104	108	112	
Frame						108
Dairy Strength						103
Udder						109
Feet & legs						109
Total score						112

Stature	[Progress bar]	Tall	104
Chest width	[Progress bar]	Wide	104
Body depth	[Progress bar]	Deep	103
Angularity	[Progress bar]	Open	100
Condition score	[Progress bar]	Fat	103
Rump angle	[Progress bar]	Sloped	106
Rump width	[Progress bar]	Wide	105
Rear legs rear view	[Progress bar]	Straight	107
Rear legs side view	[Progress bar]	Curved	96
Foot angle	[Progress bar]	Steep	102
Locomotion	[Progress bar]	Strong	110
Fore udder attachment	[Progress bar]	Strong	109
Front teat placement	[Progress bar]	Narrow	98
Teat length	[Progress bar]	Long	102
Udder depth	[Progress bar]	Shallow	108
Rear udder height	[Progress bar]	High	105
Rear teat placement	[Progress bar]	Narrow	95
Udder balance	[Progress bar]	Higher hind	100
Central ligament	[Progress bar]	Strong	100

Delta Everton

De Leenhorst E-Profit x Newhouse Jorben x Vds Metallic



Delta Everton



Delta Evelyn (dam of Everton)



Sientje 62 (Metallic)

HB N°: **933631935**
HO: **6779**

KAPPA CASEIN: **BB**
BETA CASEIN: **A2A2**

INSIRE



PRODUCTION

AHDB UK Holstein
Interbull, December 2023 Daughters: 00 | Herds: 00 | Rel.: 74%

Milk Kg	Fat Kg	Protein Kg	Fat %	Protein %	PLI
262	16.6	18.2	0.07	0.11	£508
Rel 67%					

Dutch Holstein
Interbull, December 2023

Milk Kg	Fat Kg	Protein Kg	Fat %	Protein %	NVI
66	38	28	0.40	0.29	€176

Calving ease	SCS	Persistency	Milking speed	Temperament	Ketosis
100	103	100	103	99	110

- High components
- Excellent udders
- Strong management traits

TYPE

Dutch breeding values, December 2023

	92	100	104	108	112	
Frame						105
Dairy Strength						105
Udder						111
Feet & legs						104
Total score						110

Stature						Tall	100
Chest width						Wide	101
Body depth						Deep	100
Angularity						Open	101
Condition score						Fat	104
Rump angle						Sloped	101
Rump width						Wide	103
Rear legs rear view						Straight	104
Rear legs side view						Curved	96
Foot angle						Steep	104
Locomotion						Strong	105
Fore udder attachment						Strong	110
Front teat placement						Narrow	105
Teat length						Long	102
Udder depth						Shallow	109
Rear udder height						High	110
Rear teat placement						Narrow	108
Udder balance						Higher hind	104
Central ligament						Strong	108

CRV HEALTH
+4%

Fertility						102
Hoof health						102
Udder health						104

CRV EFFICIENCY
+6%

INET (€)						196
Feed Efficiency						102
Longevity (days)						294

Delta Fisherman

Delta Accord x View Home Day Missouri x Co-op Bosside Massey



Fisherman (s. Accord)



Alger Meekma

Mars Froukje 684 VG85 (s. Jupiler) full sister of the dam of Fisherman



Alger Meekma

Mars Froukje 478 VG88 (s. Fibrax) great grand dam of Fisherman

HB N°: **63883539231**
HO: **5989**

KAPPA CASEIN: **AB**
BETA CASEIN: **A2A2**

PRODUCTION

AHDB UK Holstein Interbull, December 2023	Daughters: 5,388 Herds: 1,913 Rel.: 91%				
Milk Kg	Fat Kg	Protein Kg	Fat %	Protein %	PLI
309	23.2	18.8	0.13	0.10	€436
					Rel 84%

Dutch Holstein Interbull, December 2023	Daughters: 2,482 Herds: 993				
Milk Kg	Fat Kg	Protein Kg	Fat %	Protein %	NVI
282	43	29	0.34	0.21	€131

Calving ease	SCS	Persistency	Milking speed	Temperament	Ketosis
104	104	101	99	103	103

CRV HEALTH
+2%

Fertility		97
Hoof health		100
Udder health		105

CRV EFFICIENCY
+6%

INET (€)		211
Feed Efficiency		102
Longevity (days)		282

Daughter proven

- Component bull
- Good udders
- Good feet & legs
- Calving ease

Dutch breeding values, December 2023
Daughters: 2,482 | Herds: 993

TYPE	92	100	104	108	112	
Frame						97
Dairy Strength						102
Udder						106
Feet & legs						104
Total score						105

Stature		Tall	102
Chest width		Wide	98
Body depth		Deep	98
Angularity		Open	102
Condition score		Fat	101
Rump angle		Sloped	93
Rump width		Wide	99
Rear legs rear view		Straight	102
Rear legs side view		Curved	100
Foot angle		Steep	103
Locomotion		Strong	104
Fore udder attachment		Strong	108
Front teat placement		Narrow	105
Teat length		Long	99
Udder depth		Shallow	106
Rear udder height		High	102
Rear teat placement		Narrow	106
Udder balance		Higher hind	101
Central ligament		Strong	104

Delta Kickoff

Lowlands Blessing x Double W Ranger x VH Bernell



Kickoff (s. Blessing)



Delta Swing GP84 (s. Bernell) grand dam of Kickoff



Delta Saar VG87 (s. Danno) great grand dam of Kickoff

HB N°: **927504690**
HO: **7361**

KAPPA CASEIN: **AB**
BETA CASEIN: **A2A2**

PRODUCTION



UK Holstein
Interbull, December 2023 Daughters: 00 | Herds: 00 | Rel.: 73%

Milk Kg	Fat Kg	Protein Kg	Fat %	Protein %	PLI
2	19.6	11.8	0.24	0.14	£390
					Rel 67%

Dutch Holstein
Interbull, December 2023

Milk Kg	Fat Kg	Protein Kg	Fat %	Protein %	NVI
-473	36	9	0.67	0.30	€140

Calving ease	SCS	Persistency	Milking speed	Temperament	Ketosis
107	103	98	100	99	107



CRV HEALTH
+6%

Fertility	101
Hoof health	109
Udder health	103



CRV EFFICIENCY
-1%

INET (€)	106
Feed Efficiency	97
Longevity (days)	62

INSIRE



- High components
- Excellent udders
- Excellent Feet & Legs
- Calving ease
- Hoof Health

TYPE

Dutch breeding values, December 2023

	92	100	104	108	112	
Frame						105
Dairy Strength						102
Udder						109
Feet & legs						111
Total score						112

Stature						Tall	103
Chest width						Wide	104
Body depth						Deep	101
Angularity						Open	100
Condition score						Fat	100
Rump angle						Sloped	99
Rump width						Wide	107
Rear legs rear view						Straight	111
Rear legs side view						Curved	98
Foot angle						Steep	102
Locomotion						Strong	111
Fore udder attachment						Strong	109
Front teat placement						Narrow	104
Teat length						Long	103
Udder depth						Shallow	110
Rear udder height						High	104
Rear teat placement						Narrow	100
Udder balance						Higher hind	105
Central ligament						Strong	104

Delta Lixor

Nippon P x Double W Rush Hour x SSI Mogul Reflector



Lixor (s. Nippon P)



Peeldijker Liesje 1224 VG87 (s. Reflector) grand dam of Lixor



Peeldijker Liesje 992 VG87 (s. Bluejay) great grand dam of Lixor

HB N°: **737504587** KAPPA CASEIN: **BB**
HO: **7362** BETA CASEIN: **A1A2**

PRODUCTION

AHDB UK Holstein Interbull, December 2023 Daughters: 00 | Herds: 00 | Rel.: 73%

Milk Kg	Fat Kg	Protein Kg	Fat %	Protein %	PLI
93	18.0	18.9	0.17	0.19	£590
					Rel 66%

Dutch Holstein Interbull, December 2023

Milk Kg	Fat Kg	Protein Kg	Fat %	Protein %	NVI
-35	46	33	0.54	0.39	€219

Calving ease	SCS	Persistency	Milking speed	Temperament	Ketosis
103	107	97	102	106	105

CRV HEALTH +8%

Fertility	103
Hoof health	109
Udder health	107

CRV EFFICIENCY +3%

INET (€)	232
Feed Efficiency	96
Longevity (days)	523

INSIRE



- High components
- Medium sized cows
- Healthy hoofs
- Longevity
- Calving ease

TYPE

Dutch breeding values, December 2023

	92	100	104	108	112	
Frame						104
Dairy Strength						104
Udder						107
Feet & legs						107
Total score						109

Stature						Tall	100
Chest width						Wide	104
Body depth						Deep	100
Angularity						Open	100
Condition score						Fat	104
Rump angle						Sloped	99
Rump width						Wide	103
Rear legs rear view						Straight	106
Rear legs side view						Curved	105
Foot angle						Steep	100
Locomotion						Strong	107
Fore udder attachment						Strong	110
Front teat placement						Narrow	102
Teat length						Long	98
Udder depth						Shallow	112
Rear udder height						High	102
Rear teat placement						Narrow	101
Udder balance						Higher hind	99
Central ligament						Strong	99

Delta **Abundant P** RDC

Double W Ranger x Delta Fun P x Riethil Chanel



Abundant P Rdc (s. Ranger)



Aalshorst Geertje 313 VG87 (s. Abundant)



Barendonk Wilma 441 VG86 (s. Abundant)

HB N°: **63889152469**
HO: **6244**

KAPPA CASEIN: **BB**
BETA CASEIN: **A1A2**

PRODUCTION

AHDB UK Holstein Interbull, December 2023	Daughters: 8,219 Herds: 2,444 Rel.: 86%				
Milk Kg	Fat Kg	Protein Kg	Fat %	Protein %	PLI
105	15.7	9.5	0.14	0.07	£361
					Rel 80%

Dutch Holstein Interbull, December 2023	Dutch breeding values, December 2023				
Milk Kg	Fat Kg	Protein Kg	Fat %	Protein %	NVI
388	47	22	0.33	0.09	€182

Calving ease	SCS	Persistency	Milking speed	Temperament	Ketosis
100	107	102	98	102	105

CRV HEALTH
+3%

Fertility	101
Hoof health	106
Udder health	106

CRV EFFICIENCY
+3%

INET (€)	200
Feed Efficiency	99
Longevity (days)	204

Daughter proven

- High components
- Excellent udders
- Excellent Feet & Legs
- Healthy hoofs
- Healthy udders

TYPE	Dutch breeding values, December 2023				
	92	100	104	108	112
Frame					103
Dairy Strength					102
Udder					108
Feet & legs					115
Total score					113

Stature		Tall	102
Chest width		Wide	112
Body depth		Deep	110
Angularity		Open	102
Condition score		Fat	107
Rump angle		Sloped	105
Rump width		Wide	106
Rear legs rear view		Straight	113
Rear legs side view		Curved	99
Foot angle		Steep	94
Locomotion		Strong	117
Fore udder attachment		Strong	109
Front teat placement		Narrow	100
Teat length		Long	102
Udder depth		Shallow	108
Rear udder height		High	103
Rear teat placement		Narrow	93
Udder balance		Higher hind	120
Central ligament		Strong	97



Borax (s. Freestyle)



Delta Lyset GP83 (s. Jakarta) dam of Borax



Delta Lacoste GP83 (s. Bram) grand dam of Borax

HB N°: **714907600**
HO: **7764**

KAPPA CASEIN: **AB**
BETA CASEIN: **A2A2**

PRODUCTION



UK Holstein
Interbull, December 2023

Daughters: 00 | Herds: 00 | Rel.: 73%

Milk Kg	Fat Kg	Protein Kg	Fat %	Protein %	PLI
357	25.7	18.1	0.13	0.07	£603
					Rel 66%

Dutch Holstein
Interbull, December 2023

Milk Kg	Fat Kg	Protein Kg	Fat %	Protein %	NVI
1537	99	56	0.31	0.01	€374

Calving ease	SCS	Persistency	Milking speed	Temperament	Ketosis
102	108	108	95	101	105

CRV HEALTH
+7%

Fertility	<div style="width: 100%; height: 10px; background-color: #c00000;"></div>	103
Hoof health	<div style="width: 100%; height: 10px; background-color: #c00000;"></div>	101
Udder health	<div style="width: 100%; height: 10px; background-color: #c00000;"></div>	111

CRV EFFICIENCY
+19%

INET (€)	<div style="width: 100%; height: 10px; background-color: #0056b3;"></div>	461
Feed Efficiency	<div style="width: 100%; height: 10px; background-color: #0056b3;"></div>	110
Longevity (days)	<div style="width: 100%; height: 10px; background-color: #0056b3;"></div>	859

INSIRE

- One of the highest R&W NVI bulls
- Borax is high in several countries
- Very allround Freestyle son
- Healthy udders

TYPE

Dutch breeding values, December 2023

	92	100	104	108	112	
Frame		<div style="width: 100%; height: 10px; background-color: #0056b3;"></div>				97
Dairy Strength			<div style="width: 100%; height: 10px; background-color: #0056b3;"></div>			104
Udder			<div style="width: 100%; height: 10px; background-color: #0056b3;"></div>			108
Feet & legs			<div style="width: 100%; height: 10px; background-color: #0056b3;"></div>			106
Total score			<div style="width: 100%; height: 10px; background-color: #0056b3;"></div>			107

Stature	<div style="width: 100%; height: 10px; background-color: #0056b3;"></div>	Tall	107
Chest width	<div style="width: 100%; height: 10px; background-color: #0056b3;"></div>	Wide	99
Body depth	<div style="width: 100%; height: 10px; background-color: #0056b3;"></div>	Deep	100
Angularity	<div style="width: 100%; height: 10px; background-color: #0056b3;"></div>	Open	106
Condition score	<div style="width: 100%; height: 10px; background-color: #0056b3;"></div>	Fat	100
Rump angle	<div style="width: 100%; height: 10px; background-color: #0056b3;"></div>	Sloped	99
Rump width	<div style="width: 100%; height: 10px; background-color: #0056b3;"></div>	Wide	97
Rear legs rear view	<div style="width: 100%; height: 10px; background-color: #0056b3;"></div>	Straight	107
Rear legs side view	<div style="width: 100%; height: 10px; background-color: #0056b3;"></div>	Curved	94
Foot angle	<div style="width: 100%; height: 10px; background-color: #0056b3;"></div>	Steep	108
Locomotion	<div style="width: 100%; height: 10px; background-color: #0056b3;"></div>	Strong	107
Fore udder attachment	<div style="width: 100%; height: 10px; background-color: #0056b3;"></div>	Strong	109
Front teat placement	<div style="width: 100%; height: 10px; background-color: #0056b3;"></div>	Narrow	102
Teat length	<div style="width: 100%; height: 10px; background-color: #0056b3;"></div>	Long	101
Udder depth	<div style="width: 100%; height: 10px; background-color: #0056b3;"></div>	Shallow	109
Rear udder height	<div style="width: 100%; height: 10px; background-color: #0056b3;"></div>	High	105
Rear teat placement	<div style="width: 100%; height: 10px; background-color: #0056b3;"></div>	Narrow	98
Udder balance	<div style="width: 100%; height: 10px; background-color: #0056b3;"></div>	Higher hind	100
Central ligament	<div style="width: 100%; height: 10px; background-color: #0056b3;"></div>	Strong	99



Drone PP (s. Nectar P)



Delta Rika VG88 (s. Esperanto) dam of Drone PP



Delta Rinka GP82 (s. Meteor) grand dam of Drone PP

HB N°: **937026786**
HO: **7336**

KAPPA CASEIN: **AE**
BETA CASEIN: **A1A2**

PRODUCTION



UK Holstein
Interbull, December 2023

Daughters: 00 | Herds: 00 | Rel.: 73%

Milk Kg	Fat Kg	Protein Kg	Fat %	Protein %	PLI
267	24.0	17.9	0.16	0.11	£541
					Rel 67%



Dutch Holstein
Interbull, December 2023

Milk Kg	Fat Kg	Protein Kg	Fat %	Protein %	NVI
1637	100	68	0.27	0.09	€299

Calving ease	SCS	Persistency	Milking speed	Temperament	Ketosis
107	103	107	97	99	102

CRV HEALTH
+5%

Fertility	<div style="width: 100%; height: 10px; background-color: #c00000;"></div>	101
Hoof health	<div style="width: 100%; height: 10px; background-color: #c00000;"></div>	104
Udder health	<div style="width: 100%; height: 10px; background-color: #c00000;"></div>	104

CRV EFFICIENCY
+16%

INET (€)	<div style="width: 100%; height: 10px; background-color: #0056b3;"></div>	516
Feed Efficiency	<div style="width: 100%; height: 10px; background-color: #0056b3;"></div>	108
Longevity (days)	<div style="width: 100%; height: 10px; background-color: #0056b3;"></div>	421

INSIRE

- Homozygous polled
- Milk and components
- Calving ease
- Healthy hoofs

TYPE

Dutch breeding values, December 2023

	92	100	104	108	112	
Frame						105
Dairy Strength						102
Udder						104
Feet & legs						107
Total score						108

Stature	<div style="width: 100%; height: 10px; background-color: #0056b3;"></div>	Tall	102
Chest width	<div style="width: 100%; height: 10px; background-color: #0056b3;"></div>	Wide	105
Body depth	<div style="width: 100%; height: 10px; background-color: #0056b3;"></div>	Deep	105
Angularity	<div style="width: 100%; height: 10px; background-color: #0056b3;"></div>	Open	105
Condition score	<div style="width: 100%; height: 10px; background-color: #0056b3;"></div>	Fat	100
Rump angle	<div style="width: 100%; height: 10px; background-color: #0056b3;"></div>	Sloped	102
Rump width	<div style="width: 100%; height: 10px; background-color: #0056b3;"></div>	Wide	98
Rear legs rear view	<div style="width: 100%; height: 10px; background-color: #0056b3;"></div>	Straight	105
Rear legs side view	<div style="width: 100%; height: 10px; background-color: #0056b3;"></div>	Curved	102
Foot angle	<div style="width: 100%; height: 10px; background-color: #0056b3;"></div>	Steep	101
Locomotion	<div style="width: 100%; height: 10px; background-color: #0056b3;"></div>	Strong	107
Fore udder attachment	<div style="width: 100%; height: 10px; background-color: #0056b3;"></div>	Strong	104
Front teat placement	<div style="width: 100%; height: 10px; background-color: #0056b3;"></div>	Narrow	107
Teat length	<div style="width: 100%; height: 10px; background-color: #0056b3;"></div>	Long	112
Udder depth	<div style="width: 100%; height: 10px; background-color: #0056b3;"></div>	Shallow	99
Rear udder height	<div style="width: 100%; height: 10px; background-color: #0056b3;"></div>	High	105
Rear teat placement	<div style="width: 100%; height: 10px; background-color: #0056b3;"></div>	Narrow	106
Udder balance	<div style="width: 100%; height: 10px; background-color: #0056b3;"></div>	Higher hind	103
Central ligament	<div style="width: 100%; height: 10px; background-color: #0056b3;"></div>	Strong	106

Delta Primetime PP **RED**

Delta Taskforce P-Red x Delta Abundant P x De Vrendt Handy P



Primetime PP (s. Taskforce)



Delta Woltsje PP GP82 (s. Abundant) dam of Primetime PP

HB N^o: **561896319**
HO: **7765**

KAPPA CASEIN: **BB**
BETA CASEIN: **A1A2**

INSIRE



PRODUCTION



UK Holstein
Interbull, December 2023

Daughters: 00 | Herds: 00 | Rel.: 73%

Milk Kg	Fat Kg	Protein Kg	Fat %	Protein %	PLI
269	23.3	19.2	0.15	0.12	€662
Rel 66%					

Dutch Holstein
Interbull, December 2023

Milk Kg	Fat Kg	Protein Kg	Fat %	Protein %	NVI
810	63	44	0.30	0.17	€354

Calving ease	SCS	Persistency	Milking speed	Temperament	Ketosis
102	107	101	97	101	107

- International sire of son
- High components
- Great udders and feet & legs
- Healthy udders and hoofs

TYPE

Dutch breeding values, December 2023

	92	100	104	108	112	
Frame						108
Dairy Strength						103
Udder						110
Feet & legs						112
Total score						115

Stature						Tall	104
Chest width						Wide	105
Body depth						Deep	104
Angularity						Open	102
Condition score						Fat	101
Rump angle						Sloped	102
Rump width						Wide	104
Rear legs rear view						Straight	109
Rear legs side view						Curved	103
Foot angle						Steep	101
Locomotion						Strong	112
Fore udder attachment						Strong	108
Front teat placement						Narrow	97
Teat length						Long	115
Udder depth						Shallow	109
Rear udder height						High	108
Rear teat placement						Narrow	92
Udder balance						Higher hind	113
Central ligament						Strong	100



CRV HEALTH
+8%

Fertility						104
Hoof health						107
Udder health						110



CRV EFFICIENCY
+13%

INET (€)						325
Feed Efficiency						105
Longevity (days)						994

Vision PP **RED** **NEW**

Wilder Kitami PP x Gywer x Mission P



Vision PP (s. Kitami PP)



Anna (s. Gywer), full sister to the dam of Vision PP Red

HB N°: **927582759**
HO: **7904**

KAPPA CASEIN: **BB**
BETA CASEIN: **A2A2**

INSIRE



PRODUCTION

AHDB UK Holstein Interbull, December 2023	Daughters: 00 Herds: 00 Rel.: 73%				
Milk Kg	Fat Kg	Protein Kg	Fat %	Protein %	PLI
702	22.2	28.0	-0.07	0.05	£578
					Rel 66%

Dutch Holstein Interbull, December 2023					
Milk Kg	Fat Kg	Protein Kg	Fat %	Protein %	NVI
2152	73	71	-0.22	-0.06	€263

Calving ease	SCS	Persistency	Milking speed	Temperament	Ketosis
107	102	114	100	98	97

CRV HEALTH
+4%

Fertility	[Progress bar]	104
Hoof health	[Progress bar]	103
Udder health	[Progress bar]	101

CRV EFFICIENCY
+12%

INET (€)	[Progress bar]	475
Feed Efficiency	[Progress bar]	105
Longevity (days)	[Progress bar]	303

- High milk production
- PP, A2A2, BB
- Calving ease

TYPE

Dutch breeding values, December 2023

	92	100	104	108	112	
Frame		[Bar]				104
Dairy Strength		[Bar]				104
Udder		[Bar]				106
Feet & legs		[Bar]				103
Total score		[Bar]				107

Stature	[Bar]	Tall	104
Chest width	[Bar]	Wide	103
Body depth	[Bar]	Deep	106
Angularity	[Bar]	Open	108
Condition score	[Bar]	Fat	100
Rump angle	[Bar]	Sloped	98
Rump width	[Bar]	Wide	98
Rear legs rear view	[Bar]	Straight	102
Rear legs side view	[Bar]	Curved	101
Foot angle	[Bar]	Steep	100
Locomotion	[Bar]	Strong	103
Fore udder attachment	[Bar]	Strong	106
Front teat placement	[Bar]	Narrow	103
Teat length	[Bar]	Long	107
Udder depth	[Bar]	Shallow	104
Rear udder height	[Bar]	High	105
Rear teat placement	[Bar]	Narrow	101
Udder balance	[Bar]	Higher hind	100
Central ligament	[Bar]	Strong	102

Orange PP **RED** **NEW**

De Biesheuvel Jaffa P-Red x Delta Stentor PP Red x Delta Jupiler



Orange PP (s. Jaffa P)



De Biesheuvel Javina 5 (s. O-Man) , 7th dam of Orange PP-Red

HB N°: **592837875**
HO: **7903**

KAPPA CASEIN: **AB**
BETA CASEIN: **A2A2**

INSIRE



PRODUCTION

AHDB UK Holstein Interbull, December 2023	Daughters: 00 Herds: 00 Rel.: 72%				
Milk Kg	Fat Kg	Protein Kg	Fat %	Protein %	PLI
109	21.2	15.8	0.20	0.15	£427
					Rel 65%

Dutch Holstein Interbull, December 2023					
Milk Kg	Fat Kg	Protein Kg	Fat %	Protein %	NVI
211	58	23	0.58	0.18	€174
Calving ease	SCS	Persistency	Milking speed	Temperament	Ketosis
100	101	97	103	107	107

- High components
- Great body condition
- Excellent feet & legs
- PP and A2A2

TYPE Dutch breeding values, December 2023

	92	100	104	108	112	
Frame						104
Dairy Strength						105
Udder						108
Feet & legs						110
Total score						111

Stature						Tall	106
Chest width						Wide	103
Body depth						Deep	103
Angularity						Open	104
Condition score						Fat	103
Rump angle						Sloped	100
Rump width						Wide	101
Rear legs rear view						Straight	108
Rear legs side view						Curved	102
Foot angle						Steep	101
Locomotion						Strong	110
Fore udder attachment						Strong	106
Front teat placement						Narrow	108
Teat length						Long	99
Udder depth						Shallow	108
Rear udder height						High	104
Rear teat placement						Narrow	100
Udder balance						Higher hind	109
Central ligament						Strong	103

CRV HEALTH
+4%

Fertility						100
Hoof health						106
Udder health						103

CRV EFFICIENCY
+4%

INET (€)						224
Feed Efficiency						99
Longevity (days)						326



Fustsyn Parker

Parfect x Blumenfeld Frazld Brass-ET x Mr Mogul Delta 1427-ET



Parker (s. Parfect)



Synergy 4 Piper Brass VG87 (s. Brass) dam of Parker



Synergy Planet Piper-ET EX91 (s. Planet) 4th dam of Parker

HB N^o: **65128190241**
HO: **7496**

KAPPA CASEIN: **BB**
BETA CASEIN: **A2A2**

PRODUCTION



UK Holstein
Interbull, December 2023

Daughters: 00 | Herds: 00 | Rel.: 73%

Milk Kg	Fat Kg	Protein Kg	Fat %	Protein %	PLI
698	32.4	25.3	0.05	0.03	£556
Rel 67%					



Dutch Holstein
Interbull, December 2023

Milk Kg	Fat Kg	Protein Kg	Fat %	Protein %	NVI
1459	0.12	-0.05	74	46	€200

Calving ease	SCS	Persistency	Milking speed	Temperament	Ketosis
94	100	102	104	101	102



CRV HEALTH
+3%

Fertility					100
Hoof health					102
Udder health					99



CRV EFFICIENCY
+12%

INET (€)					364
Feed Efficiency					107
Longevity (days)					325

INSIRE

- International sire of sons
- Excellent type
- Great production
- Positive teat length

TYPE

US breeding values, December 2023

Trait	Comparison	Breeding value
Udder		2.47
Feet & Legs		1.79
Total Type		2.79
Stature		1.21
Strength		1.20
Body Depth		1.05
Dairy Form		1.31
Rump Angle		-1.55
Rump Width		2.71
Rear legs side view		0.15
Rear legs rear view		2.65
Foot Angle		1.55
Locomotion		1.72
Fore udder attachment		2.30
Rear udder height		3.63
Rear udder width		3.46
Udder cleft		2.03
Udder depth		1.65
Front teat placement		0.43
Rear teat placement		1.34
Teat length		0.78

Peak Lavezzi



Peak AltaZazzle x Pine-Tree-I Pursuit x Woodcrest Mogul Yoder

Delta Developer RDC

Delta Skippy x Weelder Esperanto x Ms Riverboy



INSIRE



Lavezzi (s. Zazzle)



INSIRE



Developer (s. Skippy)

HB N°: **3224955911**
HO: **7364**

KAPPA CASEIN: **BB**
BETA CASEIN: **A1A2**

HB N°: **641159099**
HO: **6918**

KAPPA CASEIN: **BB**
BETA CASEIN: **A1A1**

PRODUCTION

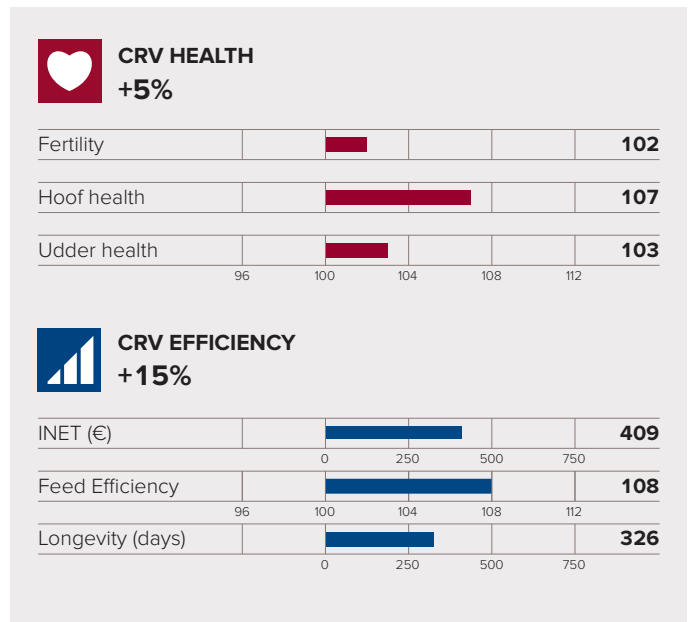
AHDB UK Holstein Interbull, December 2023 Daughters: 00 | Herds: 00 | Rel.: 73%

Milk Kg	Fat Kg	Protein Kg	Fat %	Protein %	PLI
701	46.8	29.1	0.21	0.07	£754
					Rel 67%

Dutch breeding values, December 2023

Calving ease	SCS	Persistence	Milking speed	Temperament	Ketosis
101	104	98	108	107	101

Dutch breeding values, December 2023



PRODUCTION

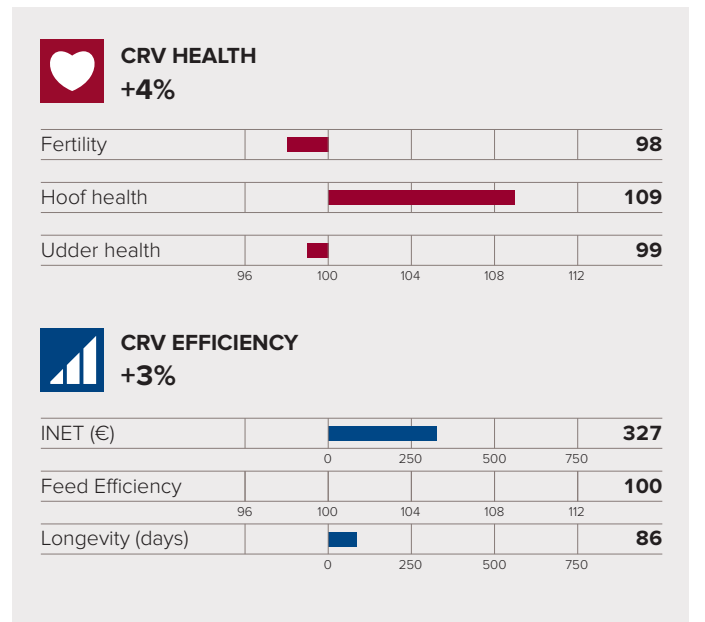
AHDB UK Holstein Interbull, December 2023 Daughters: 00 | Herds: 00 | Rel.: 73%

Milk Kg	Fat Kg	Protein Kg	Fat %	Protein %	PLI
143	30.9	21.7	0.30	0.20	£502
					Rel 67%

Dutch breeding values, December 2023

Calving ease	SCS	Persistence	Milking speed	Temperament	Ketosis
101	99	96	102	101	111

Dutch breeding values, December 2023



TYPE

US breeding values, December 2023

Trait	Comparison	Breeding value
Udder		1.57
Feet & legs		0.88
Total score		2.01

TYPE

Dutch breeding values, December 2023

Trait	Comparison	Breeding value
Frame		105
Dairy Strength		106
Udder		107
Feet & legs		104
Total score		108

Delta Launch PP RED

De Biesheuvel Jopper P x De Vrendt Handy P x De-Su 11236 Balisto



Launch PP Red (s. Jopper)

INSIRE



American Rovelli

Delta Abundant Rdc x De-SU 11236 Balisto x De Vrendt Aram



Rovelli (s. Abundant)

INSIRE



HB N°: **641394676**
HO: **6777**

KAPPA CASEIN: **BB**
BETA CASEIN: **A1A2**

HB N°: **595633409**
HO: **6916**

KAPPA CASEIN: **BB**
BETA CASEIN: **A1A2**

PRODUCTION

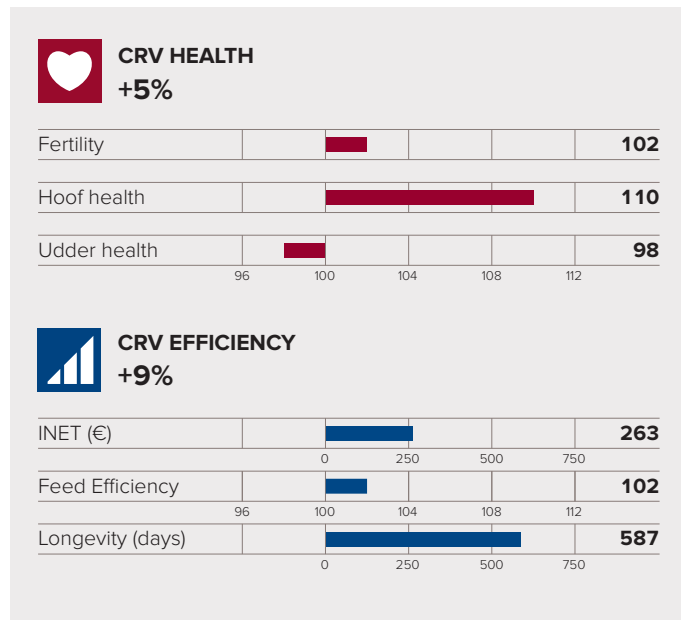
AHDB UK Holstein Interbull, December 2023 Daughters: 00 | Herds: 00 | Rel.: 73%

Milk Kg	Fat Kg	Protein Kg	Fat %	Protein %	PLI
28	20.6	13.9	0.24	0.16	£458

Dutch breeding values, December 2023

Calving ease	SCS	Persistence	Milking speed	Temperament	Ketosis
100	98	98	98	101	106

Dutch breeding values, December 2023



PRODUCTION

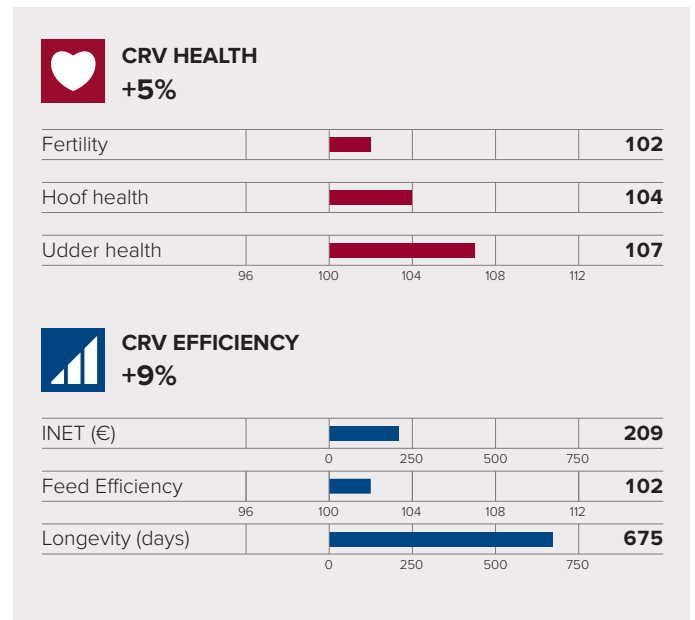
AHDB UK Holstein Interbull, December 2023 Daughters: 00 | Herds: 00 | Rel.: 73%

Milk Kg	Fat Kg	Protein Kg	Fat %	Protein %	PLI
247	19.8	17.5	0.12	0.11	£442

Dutch breeding values, December 2023

Calving ease	SCS	Persistence	Milking speed	Temperament	Ketosis
103	107	99	99	104	107

Dutch breeding values, December 2023



TYPE Dutch breeding values, December 2023

Metric	Value
Frame	101
Dairy Strength	103
Udder	101
Feet & legs	112
Total score	108

TYPE Dutch breeding values, December 2023

Metric	Value
Frame	105
Dairy Strength	100
Udder	109
Feet & legs	112
Total score	113

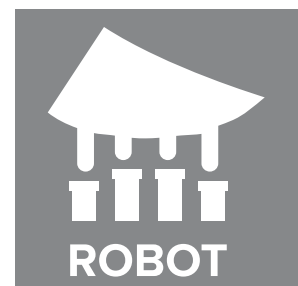
Robot suitable bulls

with breeding towards a robot-capable herd

Robotic milkers like to use bulls that give daughters that are easy to milk automatically. Bulls with desirable breeding values for **milking speed, rear teat placement, teat length, locomotion and udder balance** are shown as 'robot suitable'. With these bulls you are breeding towards a robot-capable herd.

Robot suitable bulls are:

- Fast Lane
- Kickoff
- Lixor
- Podium
- Woody
- **Primetime PP**
- **Rovelli**
- **Vision PP**



All these bulls are available in conventional and sexed semen.

CRV UK Holstein - January - April 2024

Bull Code	HO Number	Name	Pedigree	Milk Kg	Fat Kg	Protein Kg	Fat %	Protein %	PLI	% Health	Fertility	Hoof Health	Udder Health	% Efficiency	Feed Efficiency	Longevity	Sire Calving Ease	Price	SireX Price
INSIRE	HO7363	Delta Flagstone	Topstone x Relevant	780	40.9	32.3	0.11	0.07	£739	4	100	105	103	19	111	358	101	£21	£36
	HO6139	Willems Hoeve Woody	Ranger x Jetset	776	32.4	29.4	0.01	0.04	£509	3	92	109	108	16	109	401	102	£24	£36
INSIRE	HO7577	Delta Boreso	Rioveso x Floris	389	19.0	19.4	0.04	0.08	£541	4	102	108	104	9	102	492	100	£21	£32
INSIRE	HO7902	Delta Fast Lane	Remington x Lustrum	362	23.6	19.7	0.10	0.09	£622	6	105	107	101	8	102	471	103	£18	£29
INSIRE	HO7802	Delta Podium	Tornado x Ranger	366	16.9	21.0	.03	.10	£597	8	105	109	104	6	101	439	106	£21	£32
INSIRE	HO6779	Delta Everton	E-Profit x Jorben	262	16.6	18.2	0.07	0.11	£508	4	102	102	104	6	102	294	100	£21	£32
	HO5989	Delta Fisherman	Accord x Missouri	309	23.2	18.8	0.13	0.10	£436	2	97	100	105	6	102	282	104	£15	£25
INSIRE	HO7361	Delta Kickoff	Blessing x Ranger	2	19.6	11.8	0.24	0.14	£390	6	101	109	103	-1	97	62	107	£18	£29
INSIRE	HO7362	Delta Lixor	Nippon P x Rush Hour	93	18.0	18.9	0.17	0.19	£590	8	103	109	107	3	96	523	103	£21	£32
	HO6244	Delta Abundant P RF	Ranger x Fun P	105	15.7	9.5	0.14	0.07	£361	3	101	106	106	3	99	204	100	£15	£29
INSIRE	HO7764	Delta Borax	Freestyle x Jakarta	357	25.7	18.1	0.13	0.07	£603	7	103	101	111	19	110	859	102	£24	£36
INSIRE	HO7336	Delta Drone PP Red	Nectar P x Esperanto	267	24.0	17.9	0.16	0.11	£541	5	101	104	104	16	108	421	107	£21	£32
INSIRE	HO7765	Delta Primetime PP Red	Taskforce x Abundant	269	23.3	19.2	0.15	0.12	£662	8	104	107	110	13	105	994	102	£26	£40
INSIRE	HO7904	Delta Vision PP Red	Kitami PP x Gywer	702	22.2	28.0	-.07	.05	£578	4	104	103	101	12	105	303	107	£21	£32
INSIRE	HO7903	Delta Orange PP Red	Jaffa x Stentor PP	109	21.2	15.8	.20	.15	£427	4	100	106	103	4	99	326	100	£18	£29
INSIRE	HO7496	Fustsyn Parker	Parfect x Brass	698	32.4	25.3	0.05	0.03	£556	3	100	102	99	12	107	325	94	£22	£34
INSIRE	HO7364	Peak Lavezzi	Zazzle x Pursuit	701	46.8	29.1	0.21	0.07	£754	5	102	107	103	15	108	326	101	£18	£29
INSIRE	HO6918	Delta Developer Rdc	Skippy x Esperanto	143	30.9	21.7	0.30	0.20	£502	4	98	109	99	3	100	86	101	£18	£29
INSIRE	HO6777	Delta Launch PP	Gywer x Handy P	28	20.6	13.9	0.24	0.16	£458	5	102	110	98	9	102	587	100	£18	£29
INSIRE	HO6916	American Rovelli Red	Abundant P x Balisto	247	19.8	17.5	0.12	0.11	£442	5	102	104	107	9	102	675	103	£15	£27
INSIRE	HO6917	Lowlands Believer	Lunar x Altatopshot	415	29.8	21.0	0.15	0.08	£570	6	101	110	99	16	108	548	103	£15	£25
	HO6460	Delta Nominator Red	Jacuzzi x Finder	246	24.7	18.4	0.17	0.12	£482	4	103	99	104	9	104	278	100	£15	£25
INSIRE	HO6780	Delta Endless Rdc	Jacuzzi x Finder	347	36.6	26.4	0.26	0.17	£585	5	100	106	104	9	104	93	101	£12	£25
	HO5563	Delta Jacuzzi Red	Livington x Incentive	154	35.1	21.2	0.34	0.19	£675	2	97	102	105	13	105	278	101	£18	-
	HO6441	Lowlands Blessing	Jethro x Final	3	8.2	12.1	0.10	0.14	£363	8	101	110	105	0	97	286	106	£12	£25
INSIRE	HO7078	Peak Factotum	Zazzle x Positive	699	39.0	29.8	0.12	0.08	£725	2	103	100	100	10	103	327	104	£12	£25

CRV Breeding Advisors

Head Office CRV United Kingdom

Suite 15
Davies House Business Centre
4 Lowndes Road
Stourbridge
West Midlands
DY8 3SS
Telephone: 01562 861582
Email: info@crv4all.co.uk

North Cumbria

Name: Becky Atkinson
Phone: 07818 812990
Email: becky.atkinson@crv4all.co.uk

South Cumbria, North Lancashire, Yorkshire

Name: Michael Hoggarth
Phone: 07837 642225
Email: michael.hoggarth@crv4all.co.uk

South Cumbria, North Lancashire, Yorkshire

Name: Alan Mason
Phone: 07494 559462
Email: alan.mason@crv4all.co.uk

East Midlands

Name: Richard Bosley
Phone: 07970 564236
Email: richard.bosley@crv4all.co.uk

South and West Wales, Cheshire and Shropshire

Name: Richard Williams
Phone: 07711 046889
Email: richard.williams@crv4all.co.uk

Herefordshire, Worcestershire, Gloucester, Wiltshire, Avon and Oxfordshire

Name: Ian Stavert
Phone: 07538 679563
Email: ian.stavert@crv4all.co.uk

Somerset and Dorset

Name: Annabel Butler
Phone: 07969 284776
Email: annabel.butler@crv4all.co.uk

Devon and Cornwall

Name: Rosie Riches
Phone: 07387 268615
Email: rosie.riches@crv4all.co.uk





OVALERT

A fertile and
healthy herd

Watching your herd around the clock

The Ovalert heat detection system detects and identifies health, feed and fertility signals earlier and more effectively than the human eye and works 24 hours a day.

As a farmer, you can easily monitor the performance of the whole herd and it makes your herd more efficient and easier to manage. Hundreds of farmers are discovering the added value of Ovalert health, feed and fertility management.

“We can now allocate our time to cows that really need it”

Craig Galbraith

