

Dairy guide

Holstein

December
2024



CRV, leading
in health and efficiency





OVALERT

A fertile and
healthy herd

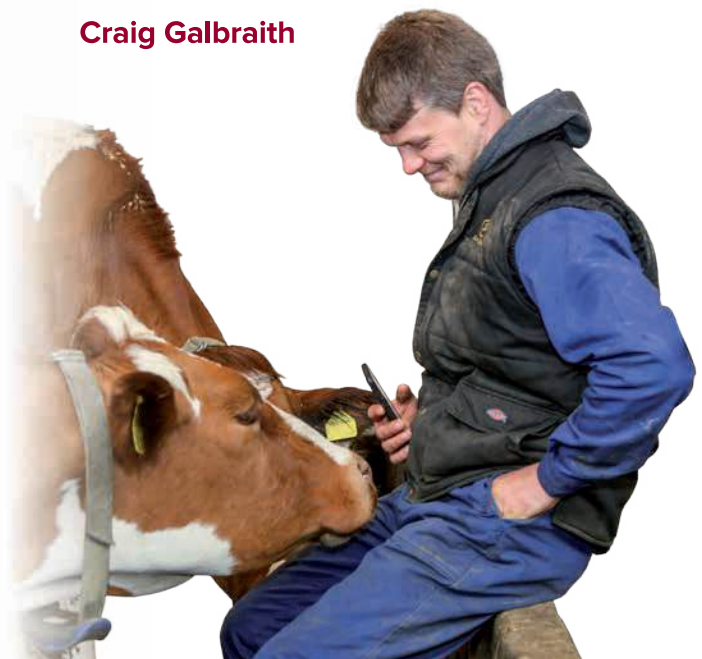
Watching your herd around the clock

The Ovalert heat detection system detects and identifies health, feed and fertility signals earlier and more effectively than the human eye and works 24 hours a day.

As a farmer, you can easily monitor the performance of the whole herd and it makes your herd more efficient and easier to manage. Hundreds of farmers are discovering the added value of Ovalert health, feed and fertility management.

“We can now allocate our time to cows that really need it”

Craig Galbraith





Flagstone (s. Topstone)



Grand D Fay (s. Reflector) grand dam of Flagstone



Delta Fay VG89 (s. Shamrock) great grand dam of Flagstone

HB N°: **629932290**
HO: **7363**

KAPPA CASEIN: **AB**
BETA CASEIN: **A2A2**

PRODUCTION

UK Holstein Interbull, December 2024	Daughters: 00 Herds: 00 Rel.: 73%				
Milk Kg	Fat Kg	Protein Kg	Fat %	Protein %	PLI
686	35	29.7	0.08	0.08	£689
					Rel 67%

Dutch Holstein Interbull, December 2024					
Milk Kg	Fat Kg	Protein Kg	Fat %	Protein %	NVI
1497	98	63	0.33	0.11	€275

Calving ease	SCS	Persistency	Milking speed	Temperament	Ketosis
101	101	106	104	92	101

CRV HEALTH

+3%

Fertility	<div style="width: 99%;"></div>	99
Hoof health	<div style="width: 104%;"></div>	104
Udder health	<div style="width: 103%;"></div>	103

CRV EFFICIENCY

+18%

INET (€)	<div style="width: 565%;"></div>	565
Feed Efficiency	<div style="width: 110%;"></div>	110
Longevity (days)	<div style="width: 287%;"></div>	287

INSIRE genomic young sire



- Milk transmitter
- Extremely kgs fat and protein
- Excellent udders
- Healthy udders
- Outcross pedigree

TYPE Dutch breeding values, December 2024

	92	100	104	108	112	
Frame		<div style="width: 101%;"></div>				101
Dairy Strength						100
Udder		<div style="width: 107%;"></div>				107
Feet & legs		<div style="width: 106%;"></div>				106
Total score		<div style="width: 107%;"></div>				107

Stature	<div style="width: 102%;"></div>	Tall	102
Chest width	<div style="width: 97%;"></div>	Wide	97
Body depth	<div style="width: 102%;"></div>	Deep	102
Angularity	<div style="width: 105%;"></div>	Open	105
Condition score	<div style="width: 93%;"></div>	Fat	93
Rump angle	<div style="width: 97%;"></div>	Sloped	97
Rump width	<div style="width: 103%;"></div>	Wide	103
Rear legs rear view	<div style="width: 106%;"></div>	Straight	106
Rear legs side view	<div style="width: 100%;"></div>	Curved	100
Foot angle	<div style="width: 102%;"></div>	Steep	102
Locomotion	<div style="width: 106%;"></div>	Strong	106
Fore udder attachment	<div style="width: 106%;"></div>	Strong	106
Front teat placement	<div style="width: 100%;"></div>	Narrow	100
Teat length	<div style="width: 101%;"></div>	Long	101
Udder depth	<div style="width: 105%;"></div>	Shallow	105
Rear udder height	<div style="width: 108%;"></div>	High	108
Rear teat placement	<div style="width: 105%;"></div>	Narrow	105
Udder balance	<div style="width: 103%;"></div>	Higher hind	103
Central ligament	<div style="width: 104%;"></div>	Strong	104



Woody (s. Ranger)



Hedra Alumette 1407 P VG86 (s. Woody)



Delta Lush VG88 (s. Woody)

HB N°: **63965020507**
HO: **6139**

KAPPA CASEIN: **AB**
BETA CASEIN: **A2A2**

PRODUCTION

AHDB UK Holstein Interbull, December 2024 Daughters: 3,128 | Herds: 820 | Rel.: 82%

Milk Kg	Fat Kg	Protein Kg	Fat %	Protein %	PLI
766	29.5	28.2	-0.01	0.03	€463
					Rel 81%

Dutch Holstein
Interbull, December 2024

Milk Kg	Fat Kg	Protein Kg	Fat %	Protein %	NVI
2206	91	78	-0.02	0.01	€284

Calving ease	SCS	Persistency	Milking speed	Temperament	Ketosis
101	110	103	96	98	98

CRV HEALTH
+2%

Fertility		93
Hoof health		107
Udder health		107

CRV EFFICIENCY
+17%

INET (€)		608
Feed Efficiency		111
Longevity (days)		305

Daughter proven



- Top for production
- Very good conformation
- Healthy udders and hoofs
- Very efficient daughters

Dutch breeding values, December 2024

Daughters: 3128 | Herds: 820

TYPE	92	100	104	108	112	
Frame						104
Dairy Strength						105
Udder						109
Feet & legs						106
Total score						110

Stature		Tall	104
Chest width		Wide	105
Body depth		Deep	109
Angularity		Open	115
Condition score		Fat	96
Rump angle		Sloped	100
Rump width		Wide	100
Rear legs rear view		Straight	106
Rear legs side view		Curved	99
Foot angle		Steep	102
Locomotion		Strong	106
Fore udder attachment		Strong	107
Front teat placement		Narrow	104
Teat length		Long	100
Udder depth		Shallow	103
Rear udder height		High	110
Rear teat placement		Narrow	99
Udder balance		Higher hind	104
Central ligament		Strong	101



Delta Producer



Newhouse Sneeker 422 (s. Stol Joc), MGGGGD from Producer



Newhouse Sneeker 247 (s. O Man), broodcow from this family

HB N°: **672156160**
HO: **8020**

KAPPA CASEIN: **BB**
BETA CASEIN: **A2A2**

PRODUCTION



UK Holstein
Interbull, December 2024

Daughters: 00 | Herds: 00 | Rel.: 73%

Milk Kg	Fat Kg	Protein Kg	Fat %	Protein %	PLI
648	36.1	27.6	0.11	0.07	£581
					Rel 66%

 **Dutch Holstein**
Interbull, December 2024

Milk Kg	Fat Kg	Protein Kg	Fat %	Protein %	NVI
1440	93	61	0.31	0.11	€230

Calving ease	SCS	Persistency	Milking speed	Temperament	Ketosis
104	100	109	99	104	99



CRV HEALTH
+1%

Fertility		99
Hoof health		101
Udder health		100



CRV EFFICIENCY
+16%

INET (€)		541
Feed Efficiency		111
Longevity (days)		183

INSIRE genomic young sire

- Huge production
- Great feed efficiency
- Calving ease
- Outcross pedigree

TYPE

Dutch breeding values, December 2024

	92	100	104	108	112	
Frame						101
Dairy Strength						103
Udder						105
Feet & legs						104
Total score						106

Stature		Tall	105
Chest width		Wide	101
Body depth		Deep	110
Angularity		Open	112
Condition score		Fat	95
Rump angle		Sloped	96
Rump width		Wide	103
Rear legs rear view		Straight	106
Rear legs side view		Curved	109
Foot angle		Steep	95
Locomotion		Strong	106
Fore udder attachment		Strong	104
Front teat placement		Narrow	106
Teat length		Long	109
Udder depth		Shallow	102
Rear udder height		High	107
Rear teat placement		Narrow	104
Udder balance		Higher hind	106
Central ligament		Strong	104



Warren P x Mauro x Delta Rosebud



Delta Statement

HB N°: **575774137**
HO: **8171**

KAPPA CASEIN: **BB**
BETA CASEIN: **A2A2**

PRODUCTION

UK Holstein Interbull, December 2024	Daughters: 00 Herds: 00 Rel.: 66%				
Milk Kg	Fat Kg	Protein Kg	Fat %	Protein %	PLI
435	15.2	24.9	0.09	-0.02	€206
					Rel 10%

Dutch Holstein Interbull, December 2024					
Milk Kg	Fat Kg	Protein Kg	Fat %	Protein %	NVI
1534	61	75	-0.04	0.21	€291

Calving ease	SCS	Persistency	Milking speed	Temperament	Ketosis
103	105	105	99	101	101

CRV HEALTH

+5%

Fertility		103
Hoof health		108
Udder health		104

CRV EFFICIENCY

+14%

INET (€)		506
Feed Efficiency		108
Longevity (days)		370

INSIRE genomic young sire

- Efficient production
- Medium sized
- Healthy hoofs
- **A2A2 & BB**
- Suitable for robots

TYPE

Dutch breeding values, December 2024

	92	100	104	108	112	
Frame						101
Dairy Strength						103
Udder						105
Feet & legs						105
Total score						106

Stature		Tall	98
Chest width		Wide	101
Body depth		Deep	97
Angularity		Open	103
Condition score		Fat	101
Rump angle		Sloped	102
Rump width		Wide	99
Rear legs rear view		Straight	102
Rear legs side view		Curved	99
Foot angle		Steep	103
Locomotion		Strong	106
Fore udder attachment		Strong	107
Front teat placement		Narrow	103
Teat length		Long	98
Udder depth		Shallow	105
Rear udder height		High	106
Rear teat placement		Narrow	102
Udder balance		Higher hind	104
Central ligament		Strong	96

Jeans Hummer PP NEW



Warren P RF x Launch PP x Willem's Hoeve Rapper



Jeans Hummer PP



Jantina 297 (s. Rapper), MGD of Hummer PP



Jeans Jantina 333 (dam of Hummer PP)

HB N°: **594789453** KAPPA CASEIN: **BB**
 HO: **8288** BETA CASEIN: **A2A2**

PRODUCTION

UK Holstein Interbull, December 2024	Daughters: 00 Herds: 00 Rel.: 65%				
Milk Kg	Fat Kg	Protein Kg	Fat %	Protein %	PLI
389	12.5	19.7	-0.03	0.05	£201
					Rel 9%

Dutch Holstein Interbull, December 2024					
Milk Kg	Fat Kg	Protein Kg	Fat %	Protein %	NVI
1492	56	65	-0.07	0.13	€251

Calving ease	SCS	Persistency	Milking speed	Temperament	Ketosis
102	104	113	99	98	105

CRV HEALTH
+5%

Fertility	<div style="width: 100%; height: 10px; background-color: #800040;"></div>	102
Hoof health	<div style="width: 100%; height: 10px; background-color: #800040;"></div>	107
Udder health	<div style="width: 100%; height: 10px; background-color: #800040;"></div>	104

CRV EFFICIENCY
+12%

INET (€)	<div style="width: 100%; height: 10px; background-color: #0056b3;"></div>	448
Feed Efficiency	<div style="width: 100%; height: 10px; background-color: #0056b3;"></div>	107
Longevity (days)	<div style="width: 100%; height: 10px; background-color: #0056b3;"></div>	217

INSIRE genomic young sire

- Productive and efficient
- A2A2, BB and PP
- Strong and healthy feet and legs

TYPE Dutch breeding values, December 2024

	92	100	104	108	112	
Frame		<div style="width: 100%; height: 10px; background-color: #0056b3;"></div>				107
Dairy Strength		<div style="width: 100%; height: 10px; background-color: #0056b3;"></div>				103
Udder		<div style="width: 100%; height: 10px; background-color: #0056b3;"></div>				104
Feet & legs		<div style="width: 100%; height: 10px; background-color: #0056b3;"></div>				107
Total score		<div style="width: 100%; height: 10px; background-color: #0056b3;"></div>				108

Stature	<div style="width: 100%; height: 10px; background-color: #0056b3;"></div>	103
Chest width	<div style="width: 100%; height: 10px; background-color: #0056b3;"></div>	103
Body depth	<div style="width: 100%; height: 10px; background-color: #0056b3;"></div>	105
Angularity	<div style="width: 100%; height: 10px; background-color: #0056b3;"></div>	108
Condition score	<div style="width: 100%; height: 10px; background-color: #0056b3;"></div>	96
Rump angle	<div style="width: 100%; height: 10px; background-color: #0056b3;"></div>	101
Rump width	<div style="width: 100%; height: 10px; background-color: #0056b3;"></div>	103
Rear legs rear view	<div style="width: 100%; height: 10px; background-color: #0056b3;"></div>	107
Rear legs side view	<div style="width: 100%; height: 10px; background-color: #0056b3;"></div>	105
Foot angle	<div style="width: 100%; height: 10px; background-color: #0056b3;"></div>	96
Locomotion	<div style="width: 100%; height: 10px; background-color: #0056b3;"></div>	108
Fore udder attachment	<div style="width: 100%; height: 10px; background-color: #0056b3;"></div>	104
Front teat placement	<div style="width: 100%; height: 10px; background-color: #0056b3;"></div>	102
Teat length	<div style="width: 100%; height: 10px; background-color: #0056b3;"></div>	105
Udder depth	<div style="width: 100%; height: 10px; background-color: #0056b3;"></div>	105
Rear udder height	<div style="width: 100%; height: 10px; background-color: #0056b3;"></div>	105
Rear teat placement	<div style="width: 100%; height: 10px; background-color: #0056b3;"></div>	103
Udder balance	<div style="width: 100%; height: 10px; background-color: #0056b3;"></div>	109
Central ligament	<div style="width: 100%; height: 10px; background-color: #0056b3;"></div>	101



Delta Smash



Delta Marga (s. Jupiler), MGD of Delta Smash



Delta Margit (dam of Smash)

HB N°: **608748366**
HO: **8287**

KAPPA CASEIN: **AB**
BETA CASEIN: **A2A2**

PRODUCTION

AHDB UK Holstein Interbull, December 2024 Daughters: 00 | Herds: 00 | Rel.: 79%

Milk Kg	Fat Kg	Protein Kg	Fat %	Protein %	PLI
304	21.7	19.9	0.12	0.10	£605
					Rel 67%

Dutch Holstein Interbull, December 2024

Milk Kg	Fat Kg	Protein Kg	Fat %	Protein %	NVI
609	49	48	0.25	0.28	€231

Calving ease	SCS	Persistency	Milking speed	Temperament	Ketosis
103	100	104	104	106	102

CRV HEALTH +5%

Fertility	104
Hoof health	109
Udder health	99

CRV EFFICIENCY +12%

INET (€)	353
Feed Efficiency	107
Longevity (days)	313

INSIRE genomic young sire



- High components
- Fertile cows
- Healthy hoofs
- Suitable for robots

TYPE Dutch breeding values, December 2024

	92	100	104	108	112	
Frame						101
Dairy Strength						102
Udder						105
Feet & legs						107
Total score						107

Stature						Tall	101
Chest width						Wide	99
Body depth						Deep	105
Angularity						Open	108
Condition score						Fat	95
Rump angle						Sloped	97
Rump width						Wide	98
Rear legs rear view						Straight	106
Rear legs side view						Curved	104
Foot angle						Steep	98
Locomotion						Strong	108
Fore udder attachment						Strong	104
Front teat placement						Narrow	100
Teat length						Long	103
Udder depth						Shallow	103
Rear udder height						High	106
Rear teat placement						Narrow	99
Udder balance						Higher hind	101
Central ligament						Strong	100

Delta Endless RF NEW

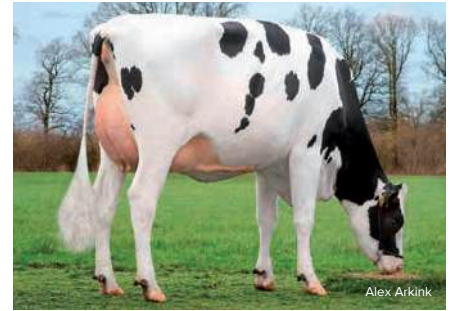
Jacuzzi x Finder x Larcrest Commander



Delta Endless RF



Weelder Rita 96 (s. Endless RF)



Oosterbrook Endless Eliso (s. Endless RF)

HB N°: **605074718**
HO: **6780**

KAPPA CASEIN: **EE**
BETA CASEIN: **A1A1**

PRODUCTION

AHDB UK Holstein Interbull, December 2024 Daughters: 00 | Herds: 00 | Rel.: 86%

Milk Kg	Fat Kg	Protein Kg	Fat %	Protein %	PLI
357	39.3	22.9	0.29	0.13	£494
Rel 82%					

Dutch Holstein
Interbull, December 2024

Milk Kg	Fat Kg	Protein Kg	Fat %	Protein %	NVI
780	114	45	0.84	0.19	€235

Calving ease	SCS	Persistency	Milking speed	Temperament	Ketosis
101	106	105	100	106	101

CRV HEALTH **+3%**

Fertility		99
Hoof health		102
Udder health		104

CRV EFFICIENCY **+10%**

INET (€)		536
Feed Efficiency		106
Longevity (days)		28

Daughter proven



- Persistent producers
- Very high components
- Healthy udders
- Excellent feet and legs



Dutch breeding values, December 2024

Daughters: 3207 | Herds: 1124

TYPE	92	100	104	108	112	
Frame						103
Dairy Strength						102
Udder						99
Feet & legs						108
Total score						105

Stature		Tall	106
Chest width		Wide	100
Body depth		Deep	103
Angularity		Open	107
Condition score		Fat	95
Rump angle		Sloped	104
Rump width		Wide	102
Rear legs rear view		Straight	110
Rear legs side view		Curved	103
Foot angle		Steep	97
Locomotion		Strong	108
Fore udder attachment		Strong	97
Front teat placement		Narrow	98
Teat length		Long	104
Udder depth		Shallow	99
Rear udder height		High	101
Rear teat placement		Narrow	99
Udder balance		Higher hind	102
Central ligament		Strong	102



Delta Present

Delta Jeronimo x Delta Yes x Stantons Adorable



Delta Present



Broeklander Lop Chrissy (s. Loptimum), MGGD to Present



Delta Cate (s. Adorable), MGD to Present

HB N°: **576782751**
HO: **8170**

KAPPA CASEIN: **AB**
BETA CASEIN: **A2A2**

PRODUCTION

AHDB UK Holstein Interbull, December 2024	Daughters: 00 Herds: 00 Rel.: 73%				
Milk Kg	Fat Kg	Protein Kg	Fat %	Protein %	PLI
239	17.7	14.7	0.09	0.08	£452
					Rel 67%

Dutch Holstein
Interbull, December 2024

Milk Kg	Fat Kg	Protein Kg	Fat %	Protein %	NVI
462	43	32	0.25	0.17	€205

Calving ease	SCS	Persistency	Milking speed	Temperament	Ketosis
105	104	104	96	105	104

CRV HEALTH +5%

Fertility	104
Hoof health	103
Udder health	103

CRV EFFICIENCY +9%

INET (€)	267
Feed Efficiency	105
Longevity (days)	289

INSIRE genomic young sire



- High components
- Medium sized
- Outcross pedigree
- Calving ease

TYPE

Dutch breeding values, December 2024

	92	100	104	108	112	
Frame						105
Dairy Strength						102
Udder						104
Feet & legs						108
Total score						108

Stature						Tall	98
Chest width						Wide	102
Body depth						Deep	102
Angularity						Open	102
Condition score						Fat	99
Rump angle						Sloped	103
Rump width						Wide	103
Rear legs rear view						Straight	109
Rear legs side view						Curved	105
Foot angle						Steep	98
Locomotion						Strong	108
Fore udder attachment						Strong	103
Front teat placement						Narrow	100
Teat length						Long	102
Udder depth						Shallow	101
Rear udder height						High	103
Rear teat placement						Narrow	100
Udder balance						Higher hind	102
Central ligament						Strong	104

Delta Fast Lane

Peak Remington x Delta Lustrum x Westcoast Kerrigan



Delta Fast Lane



Wilder Marta, MGGGD of Fast Lane

HB N^o: **542034572** KAPPA CASEIN: **AB**
 HO: **7902** BETA CASEIN: **A1A2**

INSIRE genomic young sire



PRODUCTION

AHDB UK Holstein Interbull, December 2024 Daughters: 00 | Herds: 00 | Rel.: 73%

Milk Kg	Fat Kg	Protein Kg	Fat %	Protein %	PLI
326	21.3	17.7	0.09	0.08	£565
					Rel 66%

Dutch Holstein Interbull, December 2024

Milk Kg	Fat Kg	Protein Kg	Fat %	Protein %	NVI
548	55	30	0.34	0.12	€231

Calving ease	SCS	Persistency	Milking speed	Temperament	Ketosis
102	100	103	99	100	104

CRV HEALTH +5%

Fertility	105
Hoof health	107
Udder health	100

CRV EFFICIENCY +9%

INET (€)	294
Feed Efficiency	103
Longevity (days)	578

- High components
- Feed and legs
- Great udders

TYPE

Dutch breeding values, December 2024

	92	100	104	108	112	
Frame						102
Dairy Strength						104
Udder						107
Feet & legs						107
Total score						109

Stature						Tall	98
Chest width						Wide	104
Body depth						Deep	100
Angularity						Open	101
Condition score						Fat	103
Rump angle						Sloped	96
Rump width						Wide	104
Rear legs rear view						Straight	106
Rear legs side view						Curved	101
Foot angle						Steep	94
Locomotion						Strong	108
Fore udder attachment						Strong	105
Front teat placement						Narrow	102
Teat length						Long	102
Udder depth						Shallow	105
Rear udder height						High	110
Rear teat placement						Narrow	104
Udder balance						Higher hind	107
Central ligament						Strong	102

Delta Principal PP

Fair Play P x Nippon P x Finder



Principal PP 942869



Weelder Esmonique 62 (s. Commander), 3th dam to Principal PP



Weelder Esmonique 38 (s. G-Force), 4th dam to Principal PP

HB N°: **613536745**
HO: **8019**

KAPPA CASEIN: **BB**
BETA CASEIN: **A2A2**

PRODUCTION

AHDB UK Holstein Interbull, December 2024 Daughters: 00 | Herds: 00 | Rel.: 73%

Milk Kg	Fat Kg	Protein Kg	Fat %	Protein %	PLI
343	18	16.3	0.05	0.06	£399
Rel 66%					

Dutch Holstein
Interbull, December 2024

Milk Kg	Fat Kg	Protein Kg	Fat %	Protein %	NVI
1112	52	40	0.05	0.01	€206

Calving ease	SCS	Persistency	Milking speed	Temperament	Ketosis
101	107	107	102	96	100

CRV HEALTH
+5%

Fertility	98
Hoof health	110
Udder health	107

CRV EFFICIENCY
+8%

INET (€)	328
Feed Efficiency	103
Longevity (days)	292

INSIRE genomic young sire



- Homozygous B&W bull
- Balanced production
- Healthy udders and feet & legs
- A2A2 & BB

TYPE

Dutch breeding values, December 2024

	92	100	104	108	112	
Frame		[Bar]				108
Dairy Strength		[Bar]				102
Udder		[Bar]				107
Feet & legs		[Bar]				102
Total score		[Bar]				107

Stature	[Bar]	Tall	105
Chest width	[Bar]	Wide	105
Body depth	[Bar]	Deep	105
Angularity	[Bar]	Open	103
Condition score	[Bar]	Fat	100
Rump angle	[Bar]	Sloped	99
Rump width	[Bar]	Wide	104
Rear legs rear view	[Bar]	Straight	103
Rear legs side view	[Bar]	Curved	106
Foot angle	[Bar]	Steep	95
Locomotion	[Bar]	Strong	104
Fore udder attachment	[Bar]	Strong	109
Front teat placement	[Bar]	Narrow	101
Teat length	[Bar]	Long	100
Udder depth	[Bar]	Shallow	110
Rear udder height	[Bar]	High	104
Rear teat placement	[Bar]	Narrow	98
Udder balance	[Bar]	Higher hind	104
Central ligament	[Bar]	Strong	96

Delta Everton

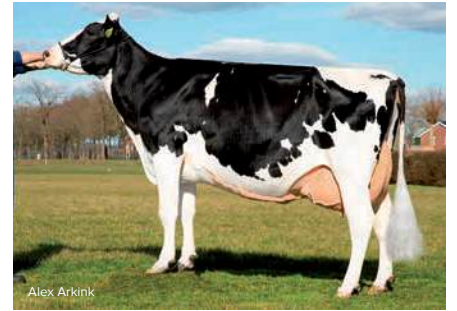
De Leenhorst E-Profit x Newhouse Jorben x Vds Metallic



Delta Everton



Delta Evelyn (dam of Everton)



Sientje 62 (s. Metallic), granddam of Everton

HB N°: **933631935**
HO: **6779**

KAPPA CASEIN: **BB**
BETA CASEIN: **A2A2**

PRODUCTION

AHDB UK Holstein Interbull, December 2024 Daughters: 1675 | Herds: 733 | Rel.: 85%

Milk Kg	Fat Kg	Protein Kg	Fat %	Protein %	PLI
158	17.3	18.3	0.13	0.15	£518
Rel 80%					

Dutch Holstein
Interbull, December 2024

Milk Kg	Fat Kg	Protein Kg	Fat %	Protein %	NVI
200	41	35	0.36	0.31	€201

Calving ease	SCS	Persistency	Milking speed	Temperament	Ketosis
99	101	101	103	99	109

CRV HEALTH +4%

Fertility	█	103
Hoof health	█	104
Udder health	█	102

CRV EFFICIENCY +7%

INET (€)	█	274
Feed Efficiency	█	101
Longevity (days)	█	497

Daughter proven



- High components
- Excellent udders
- Strong management traits

Dutch breeding values, December 2024

Daughters: 1675 | Herds: 733

TYPE	92	100	104	108	112	
Frame		█				103
Dairy Strength		█				105
Udder		█				110
Feet & legs		█				105
Total score		█				110

Stature	█					Tall 98
Chest width	█					Wide 101
Body depth						Deep 100
Angularity		█				Open 103
Condition score		█				Fat 103
Rump angle		█				Sloped 99
Rump width		█				Wide 101
Rear legs rear view		█				Straight 105
Rear legs side view		█				Curved 97
Foot angle		█				Steep 103
Locomotion		█				Strong 106
Fore udder attachment		█				Strong 108
Front teat placement		█				Narrow 105
Teat length		█				Long 105
Udder depth		█				Shallow 107
Rear udder height		█				High 110
Rear teat placement		█				Narrow 109
Udder balance		█				Higher hind 109
Central ligament		█				Strong 109



Delta Podium

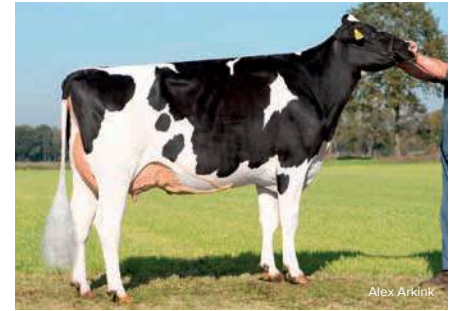
Delta Tornado x Double W Ranger x VH Bube Bernell



Delta Podium



Delta Saar (s. Danno), MGGD to Podium



Delta Swing (s. Bernell), MGD to Podium

HB N°: **578126331**
HO: **7802**

KAPPA CASEIN: **BB**
BETA CASEIN: **A1A2**

PRODUCTION

AHDB UK Holstein
Interbull, December 2024 Daughters: 00 | Herds: 00 | Rel.: 73%

Milk Kg	Fat Kg	Protein Kg	Fat %	Protein %	PLI
317	13.4	18.8	0.00	0.09	£536
Rel 67%					

Dutch Holstein
Interbull, December 2024

Milk Kg	Fat Kg	Protein Kg	Fat %	Protein %	NVI
309	22	24	0.10	0.14	€232

Calving ease	SCS	Persistency	Milking speed	Temperament	Ketosis
103	103	103	99	101	106

CRV HEALTH +8%

Fertility	106
Hoof health	110
Udder health	106

CRV EFFICIENCY +5%

INET (€)	169
Feed Efficiency	100
Longevity (days)	543

INSIRE genomic young sire



- Awesome type
- Great health traits
- Fertility
- Calving ease

TYPE Dutch breeding values, December 2024

	92	100	104	108	112	
Frame						108
Dairy Strength						103
Udder						108
Feet & legs						108
Total score						111

Stature						Tall	103
Chest width						Wide	104
Body depth						Deep	103
Angularity						Open	100
Condition score						Fat	103
Rump angle						Sloped	105
Rump width						Wide	104
Rear legs rear view						Straight	107
Rear legs side view						Curved	97
Foot angle						Steep	101
Locomotion						Strong	109
Fore udder attachment						Strong	108
Front teat placement						Narrow	98
Teat length						Long	102
Udder depth						Shallow	107
Rear udder height						High	104
Rear teat placement						Narrow	95
Udder balance						Higher hind	101
Central ligament						Strong	99



Parker (s. Parfect)



Synergy 4 Piper Brass VG87 (s. Brass) dam of Parker



Synergy Planet Piper-ET EX91 (s. Planet) 4th dam of Parker

HB N°: **3224955911**
HO: **7364**

KAPPA CASEIN: **BB**
BETA CASEIN: **A2A2**

PRODUCTION



UK Holstein
Interbull, December 2024

Daughters: 00 | Herds: 00 | Rel.: 73%

Milk Kg	Fat Kg	Protein Kg	Fat %	Protein %	PLI
745	31.8	26.1	0.02	0.01	£525
Rel 67%					



Dutch Holstein
Interbull, December 2024

Milk Kg	Fat Kg	Protein Kg	Fat %	Protein %	NVI
1359	67	44	0.09	-0.03	176

Calving ease	SCS	Persistency	Milking speed	Temperament	Ketosis
94	97	103	104	101	102



CRV HEALTH
+1%

Fertility					100
Hoof health					102
Udder health					96



CRV EFFICIENCY
+12%

INET (€)					390
Feed Efficiency					107
Longevity (days)					354

INSIRE genomic young sire

- International sire of sons
- Excellent type
- Great production
- Positive teat length

TYPE

US breeding values, December 2024

Trait	Comparison	Breeding value
Udder		2.36
Feet & Legs		1.31
Total Type		2.42
Stature		0.82
Strength		0.68
Body Depth		0.43
Dairy Form		0.99
Rump Angle		-1.22
Rump Width		2.62
Rear legs side view		-0.41
Rear legs rear view		2.19
Foot Angle		1.34
Locomotion		1.17
Fore udder attachment		2.22
Rear udder height		3.46
Rear udder width		2.91
Udder cleft		1.74
Udder depth		1.83
Front teat placement		-0.08
Rear teat placement		1.00
Teat length		1.10

Siemers Orono

Renegade Rozline x Delta Lambda x Denver



Global Holstein cow of the year 2023: Siemers Lambda Paris, dam of Orono



Siemers Lambda Paris 27856, granddam of Orono.

HB N°: **3218556309** KAPPA CASEIN: **BE**
 HO: **7946** BETA CASEIN: **A1A2**

PRODUCTION

AHDB UK Holstein Interbull, December 2024 Daughters: 00 | Herds: 00 | Rel.: 73%

Milk Kg	Fat Kg	Protein Kg	Fat %	Protein %	PLI
779	36.7	28.6	0.06	0.03	£511

Rel 67%

Dutch Holstein Interbull, December 2024

Milk Kg	Fat Kg	Protein Kg	Fat %	Protein %	NVI
1443	82	55	0.20	0.05	198

Calving ease	SCS	Persistency	Milking speed	Temperament	Ketosis
95	99	105	101	101	103

CRV HEALTH +2%

Fertility	102
Hoof health	103
Udder health	99

CRV EFFICIENCY +10%

INET (€)	483
Feed Efficiency	104
Longevity (days)	226

INSIRE genomic young sire

- Out of the Global Holstein cow of the year
- Great production
- Excellent conformation
- Positive teat length

TYPE

US breeding values, December 2024

Trait	Comparison	Breeding value
Udder		1.85
Feet & Legs		1.54
Total Type		2.20
Stature		1.61
Strength		1.26
Body Depth		1.33
Dairy Form		2.14
Rump Angle		-0.31
Rump Width		2.35
Rear legs side view		0.20
Rear legs rear view		2.29
Foot Angle		1.75
Locomotion		1.61
Fore udder attachment		1.68
Rear udder height		3.15
Rear udder width		3.56
Udder cleft		1.63
Udder depth		0.30
Front teat placement		1.46
Rear teat placement		2.11
Teat length		0.79



Borax (s. Freestyle)



Delta Lyset GP83 (s. Jakarta) dam of Borax



Delta Lacoste GP83 (s. Bram) grand dam of Borax

HB N°: **714907600**
HO: **7764**

KAPPA CASEIN: **AB**
BETA CASEIN: **A2A2**

PRODUCTION

AHDB UK Holstein
Interbull, December 2024 Daughters: 00 | Herds: 00 | Rel.: 73%

Milk Kg	Fat Kg	Protein Kg	Fat %	Protein %	PLI
255	24.2	15.6	0.16	0.08	£583
					Rel 66%

Dutch Holstein
Interbull, December 2024

Milk Kg	Fat Kg	Protein Kg	Fat %	Protein %	NVI
1379	83	49	0.22	-0.01	€373

Calving ease	SCS	Persistency	Milking speed	Temperament	Ketosis
100	111	108	95	104	105

CRV HEALTH
+6%

Fertility		102
Hoof health		102
Udder health		114

CRV EFFICIENCY
+18%

INET (€)		460
Feed Efficiency		108
Longevity (days)		1061

INSIRE genomic young sire

- One of the highest R&W NVI bulls
- Borax is high in several countries
- Very allround Freestyle son
- Healthy udders

TYPE

Dutch breeding values, December 2024

	92	100	104	108	112	
Frame						97
Dairy Strength						103
Udder						108
Feet & legs						107
Total score						108

Stature		Tall	107
Chest width		Wide	98
Body depth		Deep	101
Angularity		Open	107
Condition score		Fat	98
Rump angle		Sloped	102
Rump width		Wide	97
Rear legs rear view		Straight	107
Rear legs side view		Curved	96
Foot angle		Steep	107
Locomotion		Strong	107
Fore udder attachment		Strong	107
Front teat placement		Narrow	101
Teat length		Long	100
Udder depth		Shallow	109
Rear udder height		High	105
Rear teat placement		Narrow	97
Udder balance		Higher hind	100
Central ligament		Strong	99



Drone PP (s. Nectar P)



Delta Rika VG88 (s. Esperanto) dam of Drone PP



Delta Rika GP82 (s. Meteor) grand dam of Drone PP

HB N°: **937026786**
HO: **7336**

KAPPA CASEIN: **AE**
BETA CASEIN: **A1A2**

PRODUCTION



UK Holstein
Interbull, December 2024

Daughters: 00 | Herds: 00 | Rel.: 73%

Milk Kg	Fat Kg	Protein Kg	Fat %	Protein %	PLI
169	20.5	15.0	0.16	0.11	£488
					Rel 67%

Dutch Holstein
Interbull, December 2024

Milk Kg	Fat Kg	Protein Kg	Fat %	Protein %	NVI
1285	83	56	0.27	0.10	€227

Calving ease	SCS	Persistency	Milking speed	Temperament	Ketosis
105	103	107	98	97	103



CRV HEALTH
+3%

Fertility					101
Hoof health					103
Udder health					102



CRV EFFICIENCY
+12%

INET (€)					490
Feed Efficiency					104
Longevity (days)					428

INSIRE genomic young sire

- Homozygous polled
- Milk and components
- Calving ease
- Healthy hoofs

TYPE

Dutch breeding values, December 2024

	92	100	104	108	112	
Frame						105
Dairy Strength						102
Udder						103
Feet & legs						105
Total score						106

Stature						Tall	103
Chest width						Wide	106
Body depth						Deep	105
Angularity						Open	104
Condition score						Fat	101
Rump angle						Sloped	102
Rump width						Wide	99
Rear legs rear view						Straight	104
Rear legs side view						Curved	103
Foot angle						Steep	100
Locomotion						Strong	105
Fore udder attachment						Strong	103
Front teat placement						Narrow	107
Teat length						Long	112
Udder depth						Shallow	99
Rear udder height						High	105
Rear teat placement						Narrow	107
Udder balance						Higher hind	104
Central ligament						Strong	106

Delta Holger PP **RED**

Delta Candyman P x De Biesheuvel Jaffa P x Kingfarm Holsteins Anreli



Delta Holger PP



Delta Thina (s. Anreli), granddam of Holger PP



Delta Teuntje (s. Chanel), 4th dam of Holger PP

HB N°: **626146177**
HO: **8173**

KAPPA CASEIN: **AB**
BETA CASEIN: **A1A2**

PRODUCTION

AHDB UK Holstein Interbull, December 2024	Daughters: 00 Herds: 00 Rel.: 73%				
Milk Kg	Fat Kg	Protein Kg	Fat %	Protein %	PLI
113	20.5	17.0	0.19	0.16	£551
					Rel 66%

Dutch Holstein Interbull, December 2024					
Milk Kg	Fat Kg	Protein Kg	Fat %	Protein %	NVI
1014	83	58	0.41	0.23	€251

Calving ease	SCS	Persistency	Milking speed	Temperament	Ketosis
101	101	108	102	103	105

CRV HEALTH
+3%

Fertility	█	101
Hoof health	█	103
Udder health	█	101

CRV EFFICIENCY
+12%

INET (€)	█	498
Feed Efficiency	█	105
Longevity (days)	█	624

INSIRE genomic young sire



- Homozygous polled
- High components
- Strength and capacity
- Suitable for robots

TYPE

Dutch breeding values, December 2024

	92	100	104	108	112	
Frame		█				105
Dairy Strength		█				105
Udder		█				104
Feet & legs		█				105
Total score		█				107

Stature	█		Tall	102
Chest width	█		Wide	105
Body depth	█		Deep	101
Angularity	█		Open	103
Condition score	█		Fat	103
Rump angle	█		Sloped	101
Rump width	█		Wide	103
Rear legs rear view	█		Straight	105
Rear legs side view	█		Curved	97
Foot angle	█		Steep	104
Locomotion	█		Strong	105
Fore udder attachment	█		Strong	104
Front teat placement	█		Narrow	99
Teat length	█		Long	102
Udder depth	█		Shallow	104
Rear udder height	█		High	103
Rear teat placement	█		Narrow	98
Udder balance	█		Higher hind	103
Central ligament	█		Strong	99

Delta Primetime PP **RED**

Delta Taskforce P-Red x Delta Abundant P x De Vrendt Handy P



Primetime PP (s. Taskforce)



Delta Woltsje PP GP82 (s. Abundant) dam of Primetime PP

HB N^o: **561896319**
HO: **7765**

KAPPA CASEIN: **BB**
BETA CASEIN: **A1A2**

INSIRE genomic young sire



PRODUCTION

AHDB UK Holstein Interbull, December 2024	Daughters: 00 Herds: 00 Rel.: 73%				
Milk Kg	Fat Kg	Protein Kg	Fat %	Protein %	PLI
221	20.3	17.2	0.13	0.11	€639
					Rel 66%

Dutch Holstein Interbull, December 2024					
Milk Kg	Fat Kg	Protein Kg	Fat %	Protein %	NVI
489	50	35	0.32	0.20	€317

Calving ease	SCS	Persistency	Milking speed	Temperament	Ketosis
104	108	111	95	99	107

CRV HEALTH
+7%

Fertility	<div style="width: 100%; height: 10px; background-color: #c00000;"></div>	104
Hoof health	<div style="width: 100%; height: 10px; background-color: #c00000;"></div>	107
Udder health	<div style="width: 100%; height: 10px; background-color: #c00000;"></div>	110

CRV EFFICIENCY
+11%

INET (€)	<div style="width: 100%; height: 10px; background-color: #0056b3;"></div>	301
Feed Efficiency	<div style="width: 100%; height: 10px; background-color: #0056b3;"></div>	103
Longevity (days)	<div style="width: 100%; height: 10px; background-color: #0056b3;"></div>	944

- International sire of son
- High components
- Great udders and feet & legs
- Healthy udders and hoofs

TYPE

Dutch breeding values, December 2024

	92	100	104	108	112	
Frame						108
Dairy Strength						103
Udder						109
Feet & legs						111
Total score						113

Stature	<div style="width: 100%; height: 10px; background-color: #0056b3;"></div>	Tall	104
Chest width	<div style="width: 100%; height: 10px; background-color: #0056b3;"></div>	Wide	105
Body depth	<div style="width: 100%; height: 10px; background-color: #0056b3;"></div>	Deep	105
Angularity	<div style="width: 100%; height: 10px; background-color: #0056b3;"></div>	Open	102
Condition score	<div style="width: 100%; height: 10px; background-color: #0056b3;"></div>	Fat	102
Rump angle	<div style="width: 100%; height: 10px; background-color: #0056b3;"></div>	Sloped	103
Rump width	<div style="width: 100%; height: 10px; background-color: #0056b3;"></div>	Wide	104
Rear legs rear view	<div style="width: 100%; height: 10px; background-color: #0056b3;"></div>	Straight	109
Rear legs side view	<div style="width: 100%; height: 10px; background-color: #0056b3;"></div>	Curved	103
Foot angle	<div style="width: 100%; height: 10px; background-color: #0056b3;"></div>	Steep	101
Locomotion	<div style="width: 100%; height: 10px; background-color: #0056b3;"></div>	Strong	111
Fore udder attachment	<div style="width: 100%; height: 10px; background-color: #0056b3;"></div>	Strong	108
Front teat placement	<div style="width: 100%; height: 10px; background-color: #0056b3;"></div>	Narrow	96
Teat length	<div style="width: 100%; height: 10px; background-color: #0056b3;"></div>	Long	112
Udder depth	<div style="width: 100%; height: 10px; background-color: #0056b3;"></div>	Shallow	109
Rear udder height	<div style="width: 100%; height: 10px; background-color: #0056b3;"></div>	High	107
Rear teat placement	<div style="width: 100%; height: 10px; background-color: #0056b3;"></div>	Narrow	91
Udder balance	<div style="width: 100%; height: 10px; background-color: #0056b3;"></div>	Higher hind	111
Central ligament	<div style="width: 100%; height: 10px; background-color: #0056b3;"></div>	Strong	98

Broekhuizen Peter P **RED**

Borderview Panorama PP x Delta Eloy x Delta Japan



Broekhuizen Peter P

HB N°: **633498131**
HO: **8172**

KAPPA CASEIN: **BB**
BETA CASEIN: **A2A2**

PRODUCTION

AHDB UK Holstein Interbull, December 2024	Daughters: 00 Herds: 00 Rel.: 67%				
Milk Kg	Fat Kg	Protein Kg	Fat %	Protein %	PLI
226	10.1	12.3	0.01	0.04	€203
					Rel 11%

Dutch Holstein Interbull, December 2024					
Milk Kg	Fat Kg	Protein Kg	Fat %	Protein %	NVI
1257	54	46	-0.02	0.01	€241

Calving ease	SCS	Persistency	Milking speed	Temperament	Ketosis
102	108	108	97	100	105

CRV HEALTH
+2%

Fertility	<div style="width: 100%; height: 10px; background-color: #c00; position: relative;"><div style="width: 100%; height: 10px; background-color: #c00;"></div></div>	101
Hoof health	<div style="width: 100%; height: 10px; background-color: #c00; position: relative;"><div style="width: 100%; height: 10px; background-color: #c00;"></div></div>	105
Udder health	<div style="width: 100%; height: 10px; background-color: #c00; position: relative;"><div style="width: 100%; height: 10px; background-color: #c00;"></div></div>	104

CRV EFFICIENCY
+11%

INET (€)	<div style="width: 100%; height: 10px; background-color: #0070c0; position: relative;"><div style="width: 100%; height: 10px; background-color: #0070c0;"></div></div>	360
Feed Efficiency	<div style="width: 100%; height: 10px; background-color: #0070c0; position: relative;"><div style="width: 100%; height: 10px; background-color: #0070c0;"></div></div>	106
Longevity (days)	<div style="width: 100%; height: 10px; background-color: #0070c0; position: relative;"><div style="width: 100%; height: 10px; background-color: #0070c0;"></div></div>	452

INSIRE genomic young sire

- Complete profile
- Strong daughters
- Excellent udders
- Great feet & legs

TYPE

Dutch breeding values, December 2024

	92	100	104	108	112	
Frame						107
Dairy Strength						104
Udder						107
Feet & legs						109
Total score						111

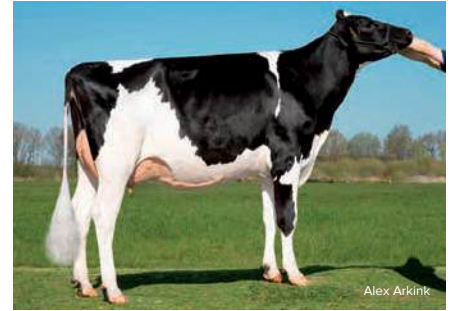
Stature						Tall 104
Chest width						Wide 106
Body depth						Deep 107
Angularity						Open 107
Condition score						Fat 100
Rump angle						Sloped 104
Rump width						Wide 106
Rear legs rear view						Straight 109
Rear legs side view						Curved 103
Foot angle						Steep 96
Locomotion						Strong 110
Fore udder attachment						Strong 104
Front teat placement						Narrow 104
Teat length						Long 105
Udder depth						Shallow 106
Rear udder height						High 108
Rear teat placement						Narrow 103
Udder balance						Higher hind 110
Central ligament						Strong 105

Delta Vision PP RED

Wilder Kitami PP x Gywer x Mission P



Vision PP (s. Kitami PP)



Anna (s. Gywer), full sister to the dam of Vision PP Red

HB N°: **927582759**
HO: **7904**

KAPPA CASEIN: **BB**
BETA CASEIN: **A2A2**

INSIRE genomic young sire



PRODUCTION

AHDB UK Holstein Interbull, December 2024	Daughters: 00 Herds: 00 Rel.: 73%				
Milk Kg	Fat Kg	Protein Kg	Fat %	Protein %	PLI
706	20.7	26.9	-0.09	0.04	£523
					Rel 67%

Dutch Holstein Interbull, December 2024					
Milk Kg	Fat Kg	Protein Kg	Fat %	Protein %	NVI
2017	59	66	-0.30	-0.06	€213

Calving ease	SCS	Persistency	Milking speed	Temperament	Ketosis
106	102	108	99	96	96

CRV HEALTH
+3%

Fertility	103
Hoof health	103
Udder health	100

CRV EFFICIENCY
+10%

INET (€)	461
Feed Efficiency	105
Longevity (days)	222

- High milk production
- PP, A2A2, BB
- Calving ease

TYPE Dutch breeding values, December 2024

	92	100	104	108	112	
Frame						103
Dairy Strength						105
Udder						106
Feet & legs						102
Total score						106

Stature						Tall	105
Chest width						Wide	103
Body depth						Deep	107
Angularity						Open	109
Condition score						Fat	100
Rump angle						Sloped	99
Rump width						Wide	97
Rear legs rear view						Straight	101
Rear legs side view						Curved	100
Foot angle						Steep	100
Locomotion						Strong	102
Fore udder attachment						Strong	106
Front teat placement						Narrow	101
Teat length						Long	106
Udder depth						Shallow	105
Rear udder height						High	105
Rear teat placement						Narrow	99
Udder balance						Higher hind	99
Central ligament						Strong	100

CRV UK Holstein - January - April 2025

Bull Code	HO Number	Name	Pedigree	Milk Kg	Fat Kg	Protein Kg	Fat %	Protein %	PLI	% Health	Fertility	Hoof Health	Udder Health	% Efficiency	Feed Efficiency	Longevity	Sire Calving Ease	Price	SireX Price
INSIRE	HO7363	Delta Flagstone	Topstone x Relevant	686	35	29.7	0.08	0.08	£689	3	99	104	103	18	110	287	101	£21	£32
	HO6139	Willems Hoeve Woody	Ranger x Jetset	766	29.5	28.2	-0.01	0.03	£463	2	93	107	107	17	111	305	101	£24	£36
INSIRE	HO8020	Delta Producer	Marpon x Jeronimo	648	36.1	27.6	0.11	0.07	£581	1	99	101	100	16	111	183	104	£21	£32
INSIRE	HO8171	Delta Statement RDC	Warren P x Mauro	435	15.2	24.9	0.09	-0.02	£205	5	103	108	104	14	108	370	103	£21	£32
INSIRE	HO8288	Jeans Hummer PP	Warren P x Launch PP	389	12.5	19.7	-0.03	0.05	£201	5	102	107	104	12	107	217	102	£24	£36
INSIRE	HO8287	Delta Smash	Jerenimo x Martin	304	21.7	19.9	0.12	0.10	£605	5	104	109	99	12	107	313	103	£21	£32
	HO6780	Delta Endless RF	Jacuzzi x Finder	357	39.3	22.9	0.29	0.13	£494	3	99	102	104	10	106	28	101	£18	£30
INSIRE	HO8170	Delta Present	Jeronimo x Yes	239	17.7	14.7	0.09	0.08	£452	5	104	103	103	9	105	289	105	£21	£32
INSIRE	HO7902	Delta Fast Lane	Remington x Lustrum	326	21.3	17.7	0.09	0.08	£565	5	105	107	100	9	103	578	102	£18	£29
INSIRE	HO8019	Delta Principal PP	Fair Play P x Nippon P	343	18	16.3	0.05	0.06	£399	5	98	110	107	8	103	292	101	£21	£32
	HO6779	Delta Everton	E-Profit x Jorben	158	17.3	18.3	0.13	0.15	£517	4	103	104	102	7	101	497	99	£21	£32
INSIRE	HO7802	Delta Podium	Tornado x Ranger	317	13.4	18.8	0.00	0.09	£536	8	106	110	106	5	100	543	103	-	£29
INSIRE	HO7496	Fustsyn Parker	Parfect x Brass	745	31.8	26.1	0.02	0.01	£525	1	100	102	96	12	107	354	94	£22	£34
INSIRE	HO7946	Siemers Orono	Rozline x Lambda	779	36.7	28.6	0.06	0.03	£511	2	102	103	99	10	104	226	95	£21	£32
INSIRE	HO7764	Delta Borax	Freestyle x Jakarta	255	24.2	15.6	0.16	0.08	£583	6	102	102	114	18	108	1061	100	£24	£36
INSIRE	HO7336	Delta Drone PP Red	Nectar P x Esperanto	169	20.5	15.0	0.16	0.11	£488	3	101	103	102	12	104	428	105	£18	£29
INSIRE	HO8173	Delta Holger PP Red	Candyman P x Jaffa P	113	20.5	17.0	0.19	0.16	£551	3	101	103	101	12	105	624	101	£21	£32
INSIRE	HO7765	Delta Primetime PP Red	Taskforce x Abundant	221	20.3	17.2	0.13	0.11	£639	7	104	107	110	11	103	944	104	£26	£40
INSIRE	HO8172	Broekhuizen Peter P Red	Panorama PP x Eloy	226	10.1	12.3	0.01	0.01	£203	2	101	105	104	11	106	452	102	£21	£32
INSIRE	HO7904	Delta Vision PP Red	Kitami PP x Gywer	706	20.7	26.9	-0.09	0.04	£523	3	103	103	100	10	105	222	106	£21	£32
INSIRE	HO7983	Delta Coach	Nippon P X Reloader	404	6.2	18.7	-0.12	0.03	-	3	100	110	106	10	104	499	102	-	£25
INSIRE	HO7078	Peak Factotum	Zazzle x Positive	434	30.5	21.9	0.15	0.08	£577	2	103	99	100	9	102	334	104	-	£25
	HO6777	Delta Launch PP	Gywer x Handy P	-29	12.9	10.1	0.17	0.13	£435	7	104	112	102	8	101	734	99	£15	£27
	HO7572	Delta Powerlift	Abundant P x Adorable	278	14.0	14.2	0.03	0.06	£394	1	98	100	105	8	105	168	103	-	£27
	HO6441	Lowlands Blessing	Jethro x Final	112	12.9	13.7	0.10	0.12	£431	7	102	108	106	8	102	459	105	£12	£25
	HO5989	Delta Fisherman	Accord x Missouri	240	17.4	17.6	0.09	0.11	£399	1	98	97	105	7	102	304	103	-	£25
INSIRE	HO7362	Delta Lixor	Nippon P x Rush Hour	-29	14.6	15.9	0.19	0.10	£543	6	100	110	107	4	99	484	102	£12	£25
INSIRE	HO7903	Delta Orange PP Red	Jaffa x Stentor PP	58	19.6	14.2	0.20	0.14	£388	3	99	105	102	3	100	245	98	£12	£27

CRV Breeding Advisors

Head Office CRV United Kingdom

Suite 15
Davies House Business Centre
4 Lowndes Road
Stourbridge
West Midlands
DY8 3SS
Telephone: 01562 861582
Email: info@crv4all.co.uk



BETTER COWS > BETTER LIFE

North Cumbria

Name: Becky Atkinson
Phone: 07818 812990
Email: becky.atkinson@crv4all.co.uk

South Cumbria, North Lancashire, Yorkshire

Name: Michael Hoggarth
Phone: 07837 642225
Email: michael.hoggarth@crv4all.co.uk

South Cumbria, North Lancashire, Yorkshire

Name: Alan Mason
Phone: 07494 559462
Email: alan.mason@crv4all.co.uk

East Midlands

Name: Richard Bosley
Phone: 07970 564236
Email: richard.bosley@crv4all.co.uk

West Wales, Powys, Shropshire, Cheshire

Richard Williams
Phone: 07711 046889
Email: richard.williams@crv4all.co.uk

Herefordshire, Worcestershire, Gloucester, Wiltshire, Avon and Oxfordshire

Name: Ian Stavert
Phone: 07538 679563
Email: ian.stavert@crv4all.co.uk

Somerset and Dorset

Name: Annabel Butler
Phone: 07969 284776
Email: annabel.butler@crv4all.co.uk

Devon and Cornwall

Name: Rosie Riches
Phone: 07387 268615
Email: rosie.riches@crv4all.co.uk

CRV abide by the AHDB Dairy and Holstein UK established Code of Advertising.

Bulls tested free for genetic recessives will not show these codes for formatting reasons.

CRV4all.co.uk



**Breeding
the future**



**Making the difference
for our farmers in a
changing environment**



BETTER COWS > BETTER LIFE

CRV offers the perfect solution for your herd.
Check out **CRV4all.co.uk**