

Sire Catalogue

April
2026



BETTER COWS > BETTER LIFE

CRV, leading
in health and efficiency





Delta Perfect (s. Woody)



Covik Twirre 1 GP84, daughter of Perfect



Delta Paulina EX90 (s. Malcolm), great grand dam of Perfect

HB N°: **632215609**
HO: **7573**

KAPPA CASEIN: **AB**
BETA CASEIN: **A2A2**

PRODUCTION



UK Holstein
Interbull, April 2026

0 daughters | 0 herds | Rel.: 86%

Milk Kg	Fat Kg	Protein Kg	Fat %	Protein %	PLI
91	15.2	12.7	0.14	0.12	£377
					Rel 82%



Dutch Holstein
Interbull, April 2026

6654 daughters | 1614 herds | Rel.: 93%

Milk Kg	Fat Kg	Protein Kg	Fat %	Protein %	NVI
518	55	37	0.33	0.19	€191

Calving ease	SCS	Persistency	Milking speed	Temperament	Ketosis
100	105	107	97	104	105



CRV HEALTH
+4%

Fertility		96
Hoof health		108
Udder health		104



CRV EFFICIENCY
+10%

INET (€)		324
Feed Efficiency		106
Longevity (days)		248

Daughter Proven



- Perfect health traits
- Perfect body traits
- Perfect feet and legs

TYPE

Dutch breeding values, April 2026
3060 daughters | 798 herds | Rel.: 99%

	92	100	104	108	112	
Frame						104
Dairy Strength						103
Udder						102
Feet & legs						111
Total score						109
Stature						Tall 100
Chest width						Wide 107
Body depth						Deep 108
Angularity						Open 108
Condition score						Fat 99
Rump angle						Sloped 105
Rump width						Wide 104
Rear legs rear view						Straight 111
Rear legs side view						Curved 96
Foot angle						Steep 104
Front feet orientation						Parallel 109
Locomotion						Strong 111
Fore udder attachment						Strong 103
Front teat placement						Narrow 102
Teat length						Long 99
Udder depth						Shallow 99
Rear udder height						High 103
Rear teat placement						Narrow 101
Udder balance						Higher hind 102
Central ligament						Strong 100

Delta Fast Lane

Peak Remington x Delta Lustrum x Westcoast Kerrigan



Anna Joose



Alex Arkink

Diana 649 VG86, daughter of Fast Lane



Alex Arkink

Delta Maan (s. Lustrum), dam of Fast Lane

HB N°: **542034572**
HO: **7902**

KAPPA CASEIN: **AB**
BETA CASEIN: **A1A2**

Daughter Proven

PRODUCTION



UK Holstein
Interbull, April 2026

0 daughters | 0 herds | Rel.: 84%

Milk Kg	Fat Kg	Protein Kg	Fat %	Protein %	PLI
211	15.9	11.6	0.09	0.06	£453
Rel 80%					



Dutch Holstein
Interbull, April 2026

5531 daughters | 1627 herds | Rel.: 96%

Milk Kg	Fat Kg	Protein Kg	Fat %	Protein %	NVI
530	56	31	0.34	0.14	€222

Calving ease	SCS	Persistency	Milking speed	Temperament	Ketosis
102	100	101	97	101	101



CRV HEALTH
+4%

Fertility					104
Hoof health					105
Udder health					99



CRV EFFICIENCY
+10%

INET (€)					301
Feed Efficiency					106
Longevity (days)					405

- High components
- Feed and legs
- Great udders



TYPE

Dutch breeding values, April 2026
2555 daughters | 849 herds | Rel.: 99%

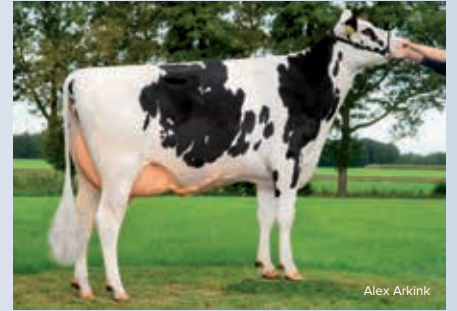
	92	100	104	108	112	
Frame						100
Dairy Strength						104
Udder						106
Feet & legs						110
Total score						109
Stature						Tall 96
Chest width						Wide 103
Body depth						Deep 100
Angularity						Open 105
Condition score						Fat 100
Rump angle						Sloped 95
Rump width						Wide 101
Rear legs rear view						Straight 110
Rear legs side view						Curved 99
Foot angle						Steep 94
Front feet orientation						Parallel 113
Locomotion						Strong 111
Fore udder attachment						Strong 104
Front teat placement						Narrow 106
Teat length						Long 101
Udder depth						Shallow 101
Rear udder height						High 111
Rear teat placement						Narrow 104
Udder balance						Higher hind 105
Central ligament						Strong 100

Delta Everton

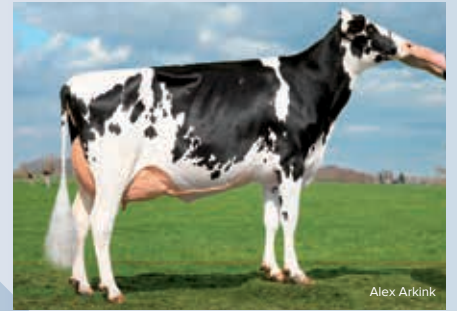
De Leenhorst E-Profit x Newhouse Jorben x Vds Metallic



Valeria VG86 and Ileen, daughters of Everton



Marjan 78 VG85, daughter of Everton



Delta Evelyn VG86 (s. Jorben), dam of Everton

HB N°: **933631935**
HO: **6779**

KAPPA CASEIN: **BB**
BETA CASEIN: **A2A2**

PRODUCTION



UK Holstein
Interbull, April 2026

241 daughters | 36 herds | Rel.: 98%

Milk Kg	Fat Kg	Protein Kg	Fat %	Protein %	PLI
136	15.1	18.8	0.11	0.17	£477
Rel 91%					



Dutch Holstein
Interbull, April 2026

5883 daughters | 1804 herds | Rel.: 99%

Milk Kg	Fat Kg	Protein Kg	Fat %	Protein %	NVI
-7	38	32	0.40	0.34	€155

Calving ease	SCS	Persistency	Milking speed	Temperament	Ketosis
100	101	105	104	99	109



CRV HEALTH
+3%

Fertility					100
Hoof health					103
Udder health					104



CRV EFFICIENCY
+4%

INET (€)					252
Feed Efficiency					101
Longevity (days)					185

Daughter Proven



- High components
- Excellent udders
- Strong management traits

Dutch breeding values, April 2026

TYPE

3192 daughters | 923 herds | Rel.: 99%

	92	100	104	108	112	
Frame						103
Dairy Strength						104
Udder						109
Feet & legs						105
Total score						109

Stature						Tall	98
Chest width						Wide	101
Body depth						Deep	100
Angularity						Open	103
Condition score						Fat	102
Rump angle						Sloped	99
Rump width						Wide	101
Rear legs rear view						Straight	104
Rear legs side view						Curved	99
Foot angle						Steep	101
Front feet orientation						Parallel	102
Locomotion						Strong	106
Fore udder attachment						Strong	108
Front teat placement						Narrow	105
Teat length						Long	104
Udder depth						Shallow	105
Rear udder height						High	109
Rear teat placement						Narrow	110
Udder balance						Higher hind	109
Central ligament						Strong	109



Delta Luena (s. Transform), dam of Cordial



Delta Levina P (s. Faithful), great grand dam of Cordial



Delta Cordial (s. HMO Sterling)

HB N°: **888787330**
HO: **HO8793**

KAPPA CASEIN: **AB**
BETA CASEIN: **A2A2**

PRODUCTION



UK Holstein
Interbull, April 2026

Daughters: 0 | Herds: 0 | Rel.: 73%

Milk Kg	Fat Kg	Protein Kg	Fat %	Protein %	PLI
799	29.1	29.5	-0.03	0.04	£600
Rel 66%					



Dutch Holstein
Interbull, April 2026

Daughters: 0 | Herds: 0 | Rel.: 77%

Milk Kg	Fat Kg	Protein Kg	Fat %	Protein %	NVI
1895	100	73	0.18	0.06	€375

Calving ease	SCS	Persistency	Milking speed	Temperament	Ketosis
103	106	111	99	104	97

INSIRE genomic young sire



- Phenomenal production
- Good health traits
- Great udders
- High longevity

Dutch breeding values, April 2026

0 daughters | 0 herds | Rel.: 89%

TYPE

	92	100	104	108	112	
Frame						104
Dairy Strength						103
Udder						107
Feet & legs						106
Total score						109

Stature						Tall	106
Chest width						Wide	102
Body depth						Deep	103
Angularity						Open	105
Condition score						Fat	99
Rump angle						Sloped	103
Rump width						Wide	101
Rear legs rear view						Straight	106
Rear legs side view						Curved	102
Foot angle						Steep	98
Front feet orientation						Parallel	103
Locomotion						Strong	106
Fore udder attachment						Strong	106
Front teat placement						Narrow	100
Teat length						Long	103
Udder depth						Shallow	108
Rear udder height						High	105
Rear teat placement						Narrow	98
Udder balance						Higher hind	102
Central ligament						Strong	99



CRV HEALTH
+5%

Fertility						104
Hoof health						107
Udder health						105



CRV EFFICIENCY
+16%

INET (€)						693
Feed Efficiency						108
Longevity (days)						923

Havep Sting

Flagstone x Rapper x Welcome Legendary 2870



Havep Nora Zonb (Rapper) dam of Sting



Nora vh Zomerbloemhof (s. Legendary), grand dam of Sting



Lola vh Zomerbloemhof (s. Reflector), great grand dam of Sting

HB N°: **750879220** KAPPA CASEIN: **AB**
HO: **HO8689** BETA CASEIN: **A2A2**

PRODUCTION

AHDB UK Holstein Interbull, April 2026	Daughters: 0 Herds: 0 Rel.: 73%				
Milk Kg	Fat Kg	Protein Kg	Fat %	Protein %	PLI
674	18.3	27.2	-0.10	0.06	£506
					Rel 67%

Dutch Holstein Interbull, April 2026	Daughters: 0 Herds: 0 Rel.: 80%				
Milk Kg	Fat Kg	Protein Kg	Fat %	Protein %	NVI
1955	85	86	0.01	0.16	€288

Calving ease	SCS	Persistency	Milking speed	Temperament	Ketosis
101	102	103	103	94	104

CRV HEALTH
+4%

Fertility	<div style="width: 97%;"></div>	97
Hoof health	<div style="width: 111%;"></div>	111
Udder health	<div style="width: 101%;"></div>	101

CRV EFFICIENCY
+14%

INET (€)	<div style="width: 625%;"></div>	625
Feed Efficiency	<div style="width: 108%;"></div>	108
Longevity (days)	<div style="width: 348%;"></div>	348

INSIRE genomic young sire

- Superb production
- Good feet and legs
- Healthy claws

Dutch breeding values, April 2026
0 daughters | 0 herds | Rel.: 90%

TYPE	92	100	104	108	112	
Frame						103
Dairy Strength						104
Udder						105
Feet & legs						107
Total score						108
Stature						Tall 107
Chest width						Wide 101
Body depth						Deep 107
Angularity						Open 109
Condition score						Fat 95
Rump angle						Sloped 100
Rump width						Wide 107
Rear legs rear view						Straight 106
Rear legs side view						Curved 103
Foot angle						Steep 99
Front feet orientation						Parallel 100
Locomotion						Strong 108
Fore udder attachment						Strong 105
Front teat placement						Narrow 103
Teat length						Long 101
Udder depth						Shallow 100
Rear udder height						High 105
Rear teat placement						Narrow 105
Udder balance						Higher hind 100
Central ligament						Strong 105

Delta Boulevard

Wendat x Martin x Jupiler



Delta Boulevard (s. Wendat)



Delta Margit VG85 (s. Martin), dam of Boulevard

HB N°: **733986370** KAPPA CASEIN: **BB**
 HO: **8407** BETA CASEIN: **A2A2**

PRODUCTION

AHDB UK Holstein Interbull, April 2026	Daughters: 0 Herds: 0 Rel.: 73%				
Milk Kg	Fat Kg	Protein Kg	Fat %	Protein %	PLI
614	13.3	25.2	-0.13	0.06	£496
					Rel 67%

Dutch Holstein
Interbull, April 2026

Daughters: 0 Herds: 0 Rel.: 80%					
Milk Kg	Fat Kg	Protein Kg	Fat %	Protein %	NVI
1818	53	61	-0.24	-0.03	€281

Calving ease	SCS	Persistency	Milking speed	Temperament	Ketosis
103	105	103	102	100	101

CRV HEALTH
+5%

Fertility	107
Hoof health	106
Udder health	104

CRV EFFICIENCY
+13%

INET (€)	421
Feed Efficiency	107
Longevity (days)	414

INSIRE genomic young sire



- High milk production
- Excellent udders
- High fertility
- Healthy hoofs
- Calving ease

Dutch breeding values, April 2026
0 daughters | 0 herds | Rel.: 90%

TYPE	92	100	104	108	112	
Frame						102
Dairy Strength						104
Udder						109
Feet & legs						101
Total score						107
Stature						106
Chest width						100
Body depth						102
Angularity						107
Condition score						94
Rump angle						100
Rump width						110
Rear legs rear view						102
Rear legs side view						105
Foot angle						97
Front feet orientation						103
Locomotion						102
Fore udder attachment						107
Front teat placement						102
Teat length						100
Udder depth						106
Rear udder height						108
Rear teat placement						99
Udder balance						99
Central ligament						101

Weinterper **Wodan**

Boso x Wake Up x Delta Beacher



Weinterper Wodan (s. Boso)



Zwaantje 375 VG87 (s. Ranger), great grand dam of Wodan

HB N°: **887245659** KAPPA CASEIN: **AB**
 HO: **8512** BETA CASEIN: **A1A2**

PRODUCTION

UK Holstein		Daughters: 0 Herds: 0 Rel.: 72%	
Interbull, April 2026			
Milk Kg	Fat Kg	Protein Kg	PLI
313	17.3	17.4	£473
Fat %	Protein %	Rel 66%	
0.06	0.08		

Dutch Holstein		Daughters: 0 Herds: 0 Rel.: 79%	
Interbull, April 2026			
Milk Kg	Fat Kg	Protein Kg	NVI
771	54	46	€269
Fat %	Protein %		
0.21	0.19		

Calving ease	SCS	Persistency	Milking speed	Temperament	Ketosis
104	107	109	102	102	101

CRV HEALTH

+5%

Fertility	█	102
Hoof health	██████████	109
Udder health	██████████	106

CRV EFFICIENCY

+8%

INET (€)	██████████	360
Feed Efficiency	██████████	103
Longevity (days)	██████████	540

INSIRE genomic young sire

- High components
- Good and healthy feet and legs
- Adds chest width

Dutch breeding values, April 2026
 0 daughters | 0 herds | Rel.: 89%

TYPE	92	100	104	108	112	
Frame						106
Dairy Strength						103
Udder						109
Feet & legs						109
Total score						112
Stature						102
Chest width						105
Body depth						103
Angularity						99
Condition score						103
Rump angle						97
Rump width						106
Rear legs rear view						109
Rear legs side view						108
Foot angle						95
Front feet orientation						106
Locomotion						112
Fore udder attachment						108
Front teat placement						100
Teat length						107
Udder depth						107
Rear udder height						108
Rear teat placement						100
Udder balance						109
Central ligament						103



Delta Borax Red (s. Freestyle)



Delta Lyset GP83 (s. Jakarta), dam of Borax Red



Delta Sterksel Lacoste GP83 (s. Bram Rdc), grand dam of Borax

HB N^o: **714907600**
HO: **7764**

KAPPA CASEIN: **AB**
BETA CASEIN: **A2A2**

Daughter Proven

PRODUCTION

AHDB UK Holstein
Interbull, April 2026

0 daughters | 0 herds | Rel.: 84%

Milk Kg	Fat Kg	Protein Kg	Fat %	Protein %	PLI
232	18.8	13.0	0.11	0.06	£527
					Rel 75%

Dutch Holstein
Interbull, April 2026

105 daughters | 61 herds | Rel.: 82%

Milk Kg	Fat Kg	Protein Kg	Fat %	Protein %	NVI
1246	75	41	0.20	-0.04	€339

Calving ease	SCS	Persistency	Milking speed	Temperament	Ketosis
102	112	107	96	104	104

CRV HEALTH
+6%

Fertility		102
Hoof health		101
Udder health		112

CRV EFFICIENCY
+16%

INET (€)		401
Feed Efficiency		108
Longevity (days)		945

- Borax is high in several countries
- Very allround Freestyle son
- Healthy udders

TYPE

Dutch breeding values, April 2026
30 daughters | 18 herds | Rel.: 89%

	92	100	104	108	112	
Frame						95
Dairy Strength						102
Udder						106
Feet & legs						107
Total score						106

Stature		Tall	107
Chest width		Wide	96
Body depth		Deep	100
Angularity		Open	106
Condition score		Fat	98
Rump angle		Sloped	102
Rump width		Wide	96
Rear legs rear view		Straight	108
Rear legs side view		Curved	96
Foot angle		Steep	108
Front feet orientation		Parallel	102
Locomotion		Strong	106
Fore udder attachment		Strong	106
Front teat placement		Narrow	102
Teat length		Long	101
Udder depth		Shallow	108
Rear udder height		High	104
Rear teat placement		Narrow	99
Udder balance		Higher hind	102
Central ligament		Strong	99



Firestone x Listrotto x Delta Rosebud-RED



Bertha 193 (Listrotto), dam of Solaris



Bertha 179 (s. Rosebud), granddam of Solaris



Lowlands Solaris (s. Firestone)

HB N°: **641707324** KAPPA CASEIN: **AB**
 HO: **HO8690** BETA CASEIN: **A2A2**

PRODUCTION

UK Holstein		Daughters: 0 Herds: 0 Rel.: 26%	
Interbull, April 2026			
Milk Kg	Fat Kg	Protein Kg	PLI
33	13.0	10.4	€326
Fat %	Protein %	Rel 24%	
0.15	0.12		

Dutch Holstein		Daughters: 0 Herds: 0 Rel.: 79%	
Interbull, April 2026			
Milk Kg	Fat Kg	Protein Kg	NVI
804	50	44	€268
Fat %	Protein %		
0.15	0.16		

Calving ease	SCS	Persistency	Milking speed	Temperament	Ketosis
104	106	105	107	103	106

CRV HEALTH

+6%

Fertility	█	101
Hoof health	█	104
Udder health	█	105

CRV EFFICIENCY

+14%

INET (€)	█	339
Feed Efficiency	█	108
Longevity (days)	█	721

INSIRE genomic young sire



- Complete profile
- Quality udders
- High milking speed

Dutch breeding values, April 2026
 0 daughters | 0 herds | Rel.: 89%

TYPE	92	100	104	108	112	
Frame						100
Dairy Strength		█				101
Udder		█	█			107
Feet & legs		█	█			106
Total score		█	█	█		107
Stature		█	█			Tall 104
Chest width		█				Wide 97
Body depth		█				Deep 99
Angularity		█				Open 104
Condition score		█				Fat 95
Rump angle		█				Sloped 103
Rump width		█				Wide 102
Rear legs rear view		█	█			Straight 106
Rear legs side view		█	█			Curved 104
Foot angle		█				Steep 97
Front feet orientation		█				Parallel 97
Locomotion		█	█			Strong 107
Fore udder attachment		█	█			Strong 107
Front teat placement		█				Narrow 106
Teat length		█				Long 103
Udder depth		█	█			Shallow 111
Rear udder height		█	█			High 106
Rear teat placement		█				Narrow 103
Udder balance		█	█			Higher hind 107
Central ligament		█				Strong 101

Double W Rustic RED

Borax x Endless RF x Delta Frontline



Double W Rustic Red (s. Borax)



Double W Ricky 123 VG86 (s. Endless), dam of Rustic Red



Double W Ricky J1 GP83 (s. Chuck), grand dam of Rustic Red

HB N°: **626538343** KAPPA CASEIN: **BE**
HO: **8510** BETA CASEIN: **A1A2**

PRODUCTION

AHDB UK Holstein		Interbull, April 2026		Daughters: 0 Herds: 0 Rel.: 73%	
Milk Kg	Fat Kg	Protein Kg	Fat %	Protein %	PLI
480	21.9	18.9	0.03	0.04	£535
					Rel 66%

Dutch Holstein
Interbull, April 2026 Daughters: 0 | Herds: 0 | Rel.: 79%

Milk Kg	Fat Kg	Protein Kg	Fat %	Protein %	NVI
2135	73	61	-0.23	-0.16	€325

Calving ease	SCS	Persistency	Milking speed	Temperament	Ketosis
99	111	112	100	101	105

CRV HEALTH
+5%

Fertility	101
Hoof health	100
Udder health	112

CRV EFFICIENCY
+13%

INET (€)	481
Feed Efficiency	105
Longevity (days)	760

INSIRE genomic young sire

- High production
- Great conformation
- Good udder health
- Son of Borax

Dutch breeding values, April 2026
0 daughters | 0 herds | Rel.: 89%

TYPE	92	100	104	108	112	
Frame						103
Dairy Strength						105
Udder						109
Feet & legs						111
Total score						112
Stature						Tall 106
Chest width						Wide 102
Body depth						Deep 107
Angularity						Open 110
Condition score						Fat 98
Rump angle						Sloped 97
Rump width						Wide 102
Rear legs rear view						Straight 110
Rear legs side view						Curved 103
Foot angle						Steep 104
Front feet orientation						Parallel 102
Locomotion						Strong 110
Fore udder attachment						Strong 108
Front teat placement						Narrow 106
Teat length						Long 104
Udder depth						Shallow 107
Rear udder height						High 107
Rear teat placement						Narrow 101
Udder balance						Higher hind 108
Central ligament						Strong 103

Koepon Real Life **RED** **NEW**

Reality Rc x Ranger Red x Alta Altuve



Koepon Real Life Red (s. Denovo 80141 Reality)

Koepon Ranger Doma 58 Red (s. OH Ranger), dam of Real Life

HB N°: **713533358**
HO: **HO8794**

KAPPA CASEIN: **BB**
BETA CASEIN: **A2A2**

PRODUCTION



UK Holstein
Interbull, April 2026

Daughters: 0 | Herds: 0 | Rel.: 73%

Milk Kg	Fat Kg	Protein Kg	Fat %	Protein %	PLI
696	23.6	25.6	-0.05	0.03	£592
Rel 66%					



Dutch Holstein
Interbull, April 2026

Daughters: 0 | Herds: 0 | Rel.: 77%

Milk Kg	Fat Kg	Protein Kg	Fat %	Protein %	NVI
1675	70	57	-0.05	-0.04	€319

Calving ease	SCS	Persistency	Milking speed	Temperament	Ketosis
102	109	105	96	100	106

CRV HEALTH
+7%

Fertility	[Progress bar]	104
Hoof health	[Progress bar]	108
Udder health	[Progress bar]	106

CRV EFFICIENCY
+13%

INET (€)	[Progress bar]	455
Feed Efficiency	[Progress bar]	105
Longevity (days)	[Progress bar]	455

INSIRE genomic young sire

- Adds strength
- Good health traits
- High longevity
- Great cow family

TYPE

Dutch breeding values, April 2026
0 daughters | 0 herds | Rel.: 89%

	92	100	104	108	112	
Frame			[Bar]			105
Dairy Strength			[Bar]			107
Udder			[Bar]			106
Feet & legs			[Bar]			104
Total score			[Bar]			108

Stature	[Bar]	103
Chest width	[Bar]	103
Body depth	[Bar]	105
Angularity	[Bar]	111
Condition score	[Bar]	98
Rump angle	[Bar]	96
Rump width	[Bar]	104
Rear legs rear view	[Bar]	104
Rear legs side view	[Bar]	99
Foot angle	[Bar]	101
Front feet orientation	[Bar]	100
Locomotion	[Bar]	104
Fore udder attachment	[Bar]	106
Front teat placement	[Bar]	102
Teat length	[Bar]	101
Udder depth	[Bar]	105
Rear udder height	[Bar]	104
Rear teat placement	[Bar]	99
Udder balance	[Bar]	98
Central ligament	[Bar]	100

Delta Ratings PP **RED** **NEW**

Primetime PP x Launch PP x Willems Hoeve Woody



Delta Cody (s. Woody), grand dam of Ratings PP



Delta Ratings

HB N°: **679104368**
HO: **HO8691**

KAPPA CASEIN: **AB**
BETA CASEIN: **A1A2**

PRODUCTION



UK Holstein
Interbull, April 2026

Daughters: 0 | Herds: 0 | Rel.: 25%

Milk Kg	Fat Kg	Protein Kg	Fat %	Protein %	PLI
38	9.4	8.9	0.10	0.10	€329
					Rel 23%



Dutch Holstein
Interbull, April 2026

Daughters: 0 | Herds: 0 | Rel.: 78%

Milk Kg	Fat Kg	Protein Kg	Fat %	Protein %	NVI
885	38	43	-0.02	0.12	€346

Calving ease	SCS	Persistency	Milking speed	Temperament	Ketosis
103	111	111	99	93	107

INSIRE genomic young sire

- High conformation
- Healthy cows
- High longevity

Dutch breeding values, April 2026

0 daughters | 0 herds | Rel.: 89%

TYPE

	92	100	104	108	112	
Frame						104
Dairy Strength						103
Udder						111
Feet & legs						112
Total score						114

Stature						Tall	100
Chest width						Wide	102
Body depth						Deep	98
Angularity						Open	100
Condition score						Fat	103
Rump angle						Sloped	102
Rump width						Wide	103
Rear legs rear view						Straight	111
Rear legs side view						Curved	95
Foot angle						Steep	105
Front feet orientation						Parallel	107
Locomotion						Strong	113
Fore udder attachment						Strong	110
Front teat placement						Narrow	97
Teat length						Long	102
Udder depth						Shallow	114
Rear udder height						High	107
Rear teat placement						Narrow	95
Udder balance						Higher hind	108
Central ligament						Strong	103



CRV HEALTH
+8%

Fertility						105
Hoof health						110
Udder health						111



CRV EFFICIENCY
+11%

INET (€)						299
Feed Efficiency						104
Longevity (days)						972

Delta Primetime PP **RED**

Delta Taskforce P-Red x Delta Abundant P x De Vrendt Handy P



Delta Primetime PP (s. Taskforce P)



Delta Woltsje GP83 (s. Abundant), dam of Primetime PP Red

HB N^o: **561896319**
HO: **7765**

KAPPA CASEIN: **BB**
BETA CASEIN: **A1A2**

PRODUCTION



UK Holstein
Interbull, April 2026

Daughters: 0 | Herds: 0 | Rel.: 73%

Milk Kg	Fat Kg	Protein Kg	Fat %	Protein %	PLI
-3	10.3	10.5	0.13	0.13	€503
Rel 67%					



Dutch Holstein
Interbull, April 2026

Daughters: 0 | Herds: 0 | Rel.: 81%

Milk Kg	Fat Kg	Protein Kg	Fat %	Protein %	NVI
320	39	30	0.28	0.21	€305

Calving ease	SCS	Persistency	Milking speed	Temperament	Ketosis
101	111	112	95	99	110

INSIRE genomic young sire



- International sire of son
- High components
- Great udders and feet & legs
- Healthy udders and hoofs

TYPE

Dutch breeding values, April 2026
1 daughters | 1 herds | Rel.: 91%

	92	100	104	108	112	
Frame						107
Dairy Strength						102
Udder						109
Feet & legs						110
Total score						112

Stature						Tall	103
Chest width						Wide	104
Body depth						Deep	103
Angularity						Open	100
Condition score						Fat	101
Rump angle						Sloped	103
Rump width						Wide	103
Rear legs rear view						Straight	110
Rear legs side view						Curved	101
Foot angle						Steep	103
Front feet orientation						Parallel	105
Locomotion						Strong	109
Fore udder attachment						Strong	107
Front teat placement						Narrow	100
Teat length						Long	112
Udder depth						Shallow	110
Rear udder height						High	107
Rear teat placement						Narrow	93
Udder balance						Higher hind	109
Central ligament						Strong	101



CRV HEALTH
+8%

Fertility						105
Hoof health						105
Udder health						114



CRV EFFICIENCY
+9%

INET (€)						246
Feed Efficiency						103
Longevity (days)						733

Delta Ted Talk PP RED

Warren P RF x Jawline PP x Jacuzzi



Delta Ted Talk PP Red (s. Warren P Rdc)



Delta Thanee GP 81 (s. Jacuzzi), dam of Ted Talk PP Red

HB N°: **893140151** KAPPA CASEIN: **AB**
HO: **8406** BETA CASEIN: **A2A2**

PRODUCTION

UK Holstein		Daughters: 0 Herds: 0 Rel.: 73%			
Interbull, April 2026					
Milk Kg	Fat Kg	Protein Kg	Fat %	Protein %	PLI
232	20.5	22.3	0.13	0.17	£507
					Rel 66%

Dutch Holstein		Daughters: 0 Herds: 0 Rel.: 78%			
Interbull, April 2026					
Milk Kg	Fat Kg	Protein Kg	Fat %	Protein %	NVI
1047	63	66	0.17	0.30	€244

Calving ease	SCS	Persistency	Milking speed	Temperament	Ketosis
102	104	107	96	96	103

CRV HEALTH

+4%

Fertility	█	103
Hoof health	█	106
Udder health	█	103

CRV EFFICIENCY

+9%

INET (€)	█	473
Feed Efficiency	█	106
Longevity (days)	█	81

INSIRE genomic young sire

- Homozygous polled
- High components
- Healthy hoofs
- Great udders

Dutch breeding values, April 2026
0 daughters | 0 herds | Rel.: 90%

TYPE	92	100	104	108	112	
Frame		█				102
Dairy Strength		█				103
Udder		█				107
Feet & legs		█				104
Total score		█				107
Stature		█				105
Chest width		█				99
Body depth		█				101
Angularity		█				106
Condition score		█				97
Rump angle		█				101
Rump width		█				103
Rear legs rear view		█				106
Rear legs side view		█				105
Foot angle		█				94
Front feet orientation		█				97
Locomotion		█				105
Fore udder attachment		█				109
Front teat placement		█				99
Teat length		█				102
Udder depth		█				110
Rear udder height		█				105
Rear teat placement		█				99
Udder balance		█				102
Central ligament		█				97



Seltzer PP-Red x Candyman P x Nectar P-Red



Delta Thelisa (s. Candyman), dam of Brussels PP



Delta Tialda (s. Esperanto), great grand dam of Brussels PP



Delta Brussels PP Red (s. Seltzer PP)

HB N°: **689509821** KAPPA CASEIN: **AB**
 HO: **8763** BETA CASEIN: **A1A2**

PRODUCTION

AHDB UK Holstein Interbull, April 2026	Daughters: 0 Herds: 0 Rel.: 73%				
Milk Kg	Fat Kg	Protein Kg	Fat %	Protein %	PLI
641	20.1	28.6	-0.06	0.08	£530
					Rel 66%

Dutch Holstein
Interbull, April 2026

Daughters: 0 Herds: 0 Rel.: 78%					
Milk Kg	Fat Kg	Protein Kg	Fat %	Protein %	NVI
1205	53	62	-0.01	0.20	€234

Calving ease	SCS	Persistency	Milking speed	Temperament	Ketosis
102	102	106	108	98	100

CRV HEALTH
+5%

Fertility		104
Hoof health		106
Udder health		100

CRV EFFICIENCY
+5%

INET (€)		347
Feed Efficiency		101
Longevity (days)		426

INSIRE genomic young sire

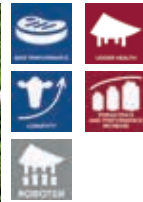


- High milking speed
- Strength
- Ideal for robot

Dutch breeding values, April 2026
0 daughters | 0 herds | Rel.: 89%

TYPE	92	100	104	108	112	
Frame						103
Dairy Strength						102
Udder						102
Feet & legs						106
Total score						105
Stature						Tall 102
Chest width						Wide 106
Body depth						Deep 102
Angularity						Open 101
Condition score						Fat 103
Rump angle						Sloped 101
Rump width						Wide 98
Rear legs rear view						Straight 106
Rear legs side view						Curved 102
Foot angle						Steep 103
Front feet orientation						Parallel 103
Locomotion						Strong 105
Fore udder attachment						Strong 100
Front teat placement						Narrow 96
Teat length						Long 101
Udder depth						Shallow 103
Rear udder height						High 101
Rear teat placement						Narrow 93
Udder balance						Higher hind 102
Central ligament						Strong 98

IKAROS PP*



INSIRE

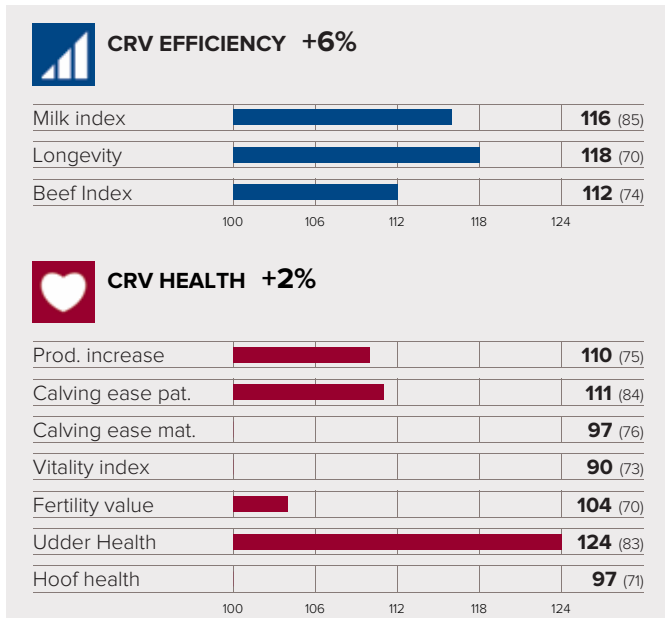
Breeder: Andreas Bernauer, Emertsham

Ischgl Pp* x Hoeri x Mysterium Pp* Irun 04/2026
 HB 10/871731 aAa 432561 BK A2A2 Dob 16.03.2024 ET

PRODUCTION

Reliability 85%

Kg of milk	% fat	kg fat	% protein	kg protein
+538	-0,04	+19	+0,07	+25



HEALTH TRAITS

Mastitis	Early Fertility dis.	Cysts	Milk fever
126	96	102	



Fanny, Dam of Ikaros PP
 Andreas Bernauer, Emertsham

1st calf

- ▶ Allrounder
- ▶ Udder Health
- ▶ Udder

TMI/GZW	Ecol. TMI	Msp	Persistency	Milk. beh.
129 (76)	130	111	107	96

EXTERIOR

Reliability 82%

Frame	Muscul.	Feet & legs	Udder	Udder clean.
106	105	112	125	103

Height at cross	small	large	110
Body length	short	long	105
Rump width	narrow	wide	101
Body depth	small	deep	96
Rump angle	ascending	sloped	106
Hock angularity	straight	sickled	105
Hock development	swollen	dry	102
Pasterns	weak	strong	116
Hoof height	low angles	steep angles	111
Fore udder length	short	long	105
Rear udder length	short	long	90
Fore udder attachment	weak	strong	116
Central Ligament	weak	strong	101
Udder depth	deep	high	127
Teat length	short	long	93
Teat thickness	thin	thick	85
Teat placement front	outwards	inwards	112
Teat placement rear	outwards	inwards	105
Teat direction rear	outwards	inwards	111

BEEF

Daily net gain	Carcass percentage	Europ.trade class
110	113	105



Frika, Granddam of Ikaros PP
 Andreas Bernauer, Emertsham

3rd calf

WASSERSTOFF



INSIRE

Breeder: Schederecker GbR, Schnaitsee

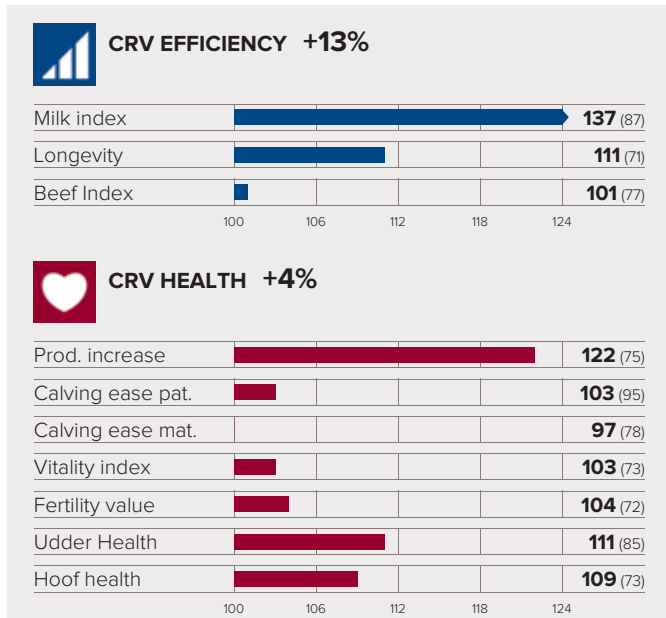
- ▶ Milk and neutral components
- ▶ Feet & legs and Udder
- ▶ Teat placement

Wasserspiel x Wintertraum x Hermelin Irun 04/2026
HB 10/871709 aAa 156324 BK A1A2 Dob 04.01.2024 ET

PRODUCTION

Reliability 87%

Kg of milk	% fat	kg fat	% protein	kg protein
+1.319	+0,04	+58	+0,00	+47



HEALTH TRAITS

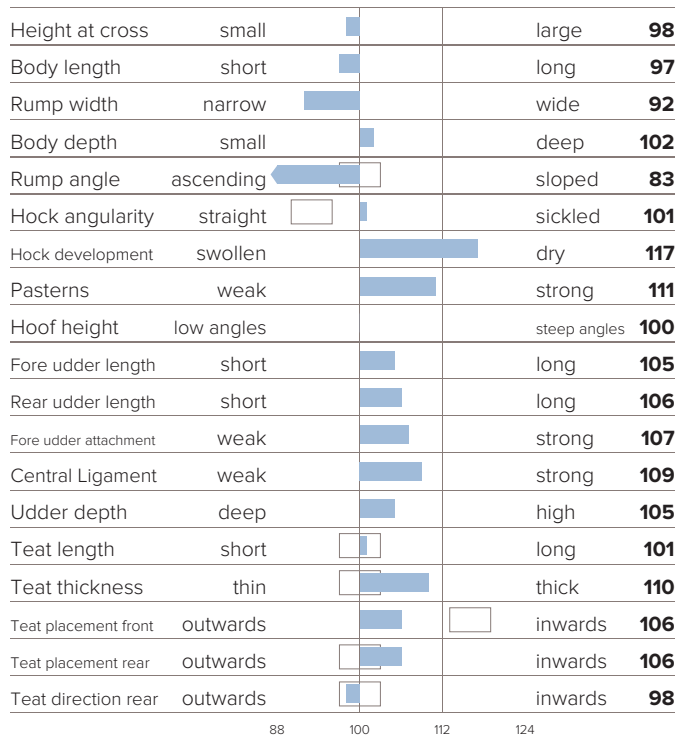
Mastitis	Early Fertility dis.	Cysts	Milk fever
108	103	106	

TMI/GZW	Ecol. TMI	Msp	Persistency	Milk. beh.
139 (79)	136	110	109	95

EXTERIOR

Reliability 84%

Frame	Muscul.	Feet & legs	Udder	Udder clean.
96	94	120	112	102



BEEF

Daily net gain	Carcass percentage	Europ.trade class
98	101	101



Krone, Dam of Wasserstoff
Schederecker GbR, Schnaitsee

1st calf



Korona, granddam of Wasserstoff
Schederecker GbR, Schnaitsee

3rd calf



REMCO P VAN KNOCKE

TOP SIDE RASHFORD X BALLINAKILL HULK



MacG
MAY '23

Crossbreeding Index
426 calves at 112 farms

BE 320691366
Born: 21-11-2021

Calving Ease **121**
(Rel. 74%)

Birth Weight **83**
(Rel. 80%)

Gestation Length **102**
(Rel. 89%)



Integrated genetics and data solutions

Besides our genetics, we offer other great solutions that make life easier for you. These are based on data collected from millions of cows and the needs of tens of thousands of farmers worldwide. We explain three of our helpful solutions for you.



HerdOptimizer

> Genomic testing for the next generation herd

HerdOptimizer provides you with clear insights into the genetic potential of the female animals via genomic testing. This customised breeding concept and management tool gives a reliable prediction of the future performance of the animals and contains the possibility to personalise your mating advice using SireMatch.



SireMatch

> The perfect match for a perfect herd

SireMatch is a breeding management programme that helps you gain the maximum genetic progress from your herd with minimum effort. The programme generates the best mating propositions and excludes the risk of inbreeding.



Ovalert

> Watching your herd around the clock

Ovalert is a 24/7 heat detection system that detects and identifies health, feed and fertility signals earlier and more effectively than the human eye. Farmers can easily monitor the performance of the whole herd and manage their herd more efficiently. Ovalert contains a connection to SireMatch.

North Cumbria

Becky Atkinson

P: 07818 812990

E: becky.atkinson@crv4all.co.uk

Gloucester, Wiltshire, Avon and Oxfordshire

Ian Stavert

P: 07538 679563

E: ian.stavert@crv4all.co.uk

South Cumbria, North Lancashire, Yorkshire

Michael Hoggarth

P: 07837 642225

E: michael.hoggarth@crv4all.co.uk

Cornwall & Devon

Louise Coates

P: 07901 669913

E: louise.coates@crv4all.co.uk

South and West Wales, Herefordshire, Worcestershire and Shropshire

Lee Peplow

P: 07711 046889

E: lee.peplow@crv4all.co.uk

