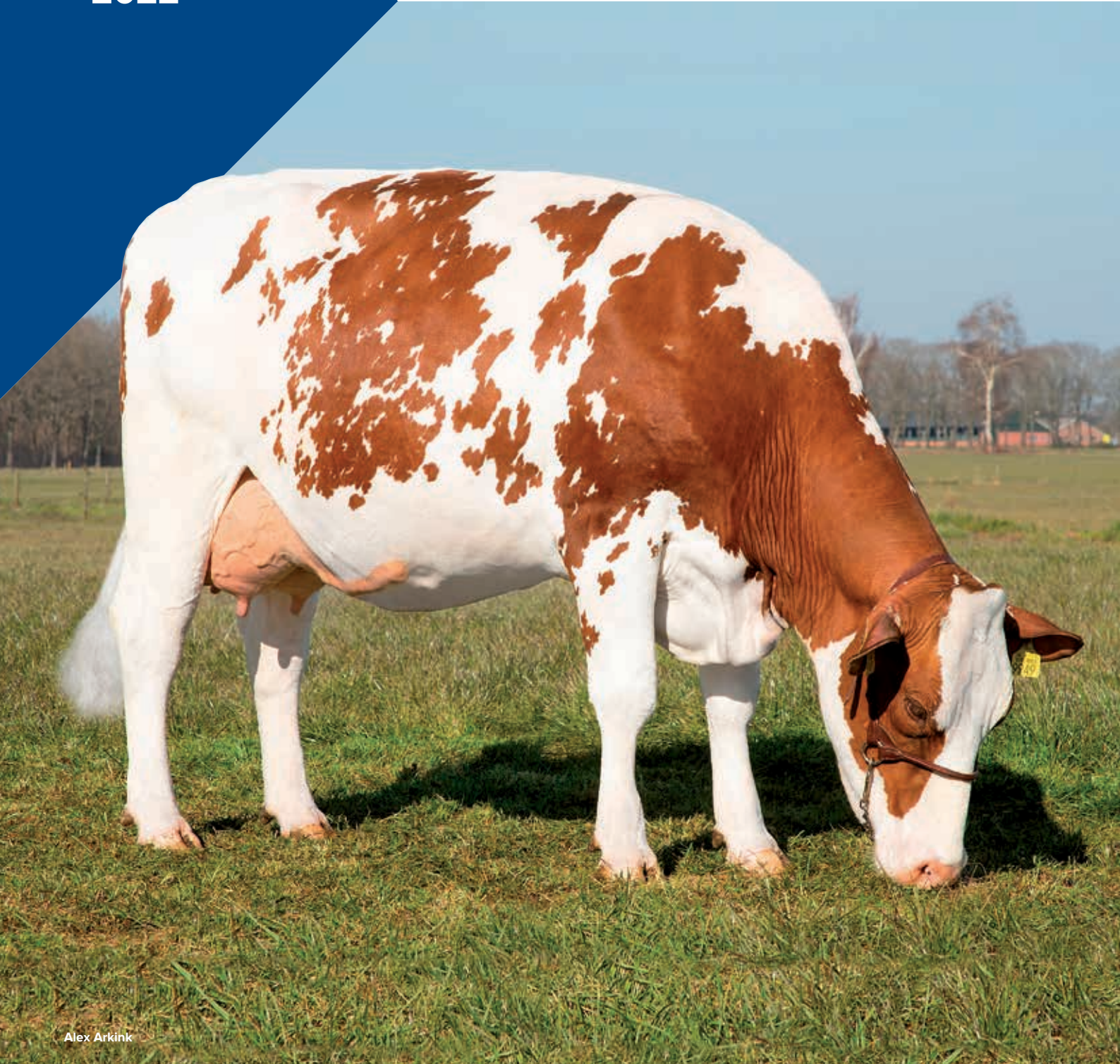


Dairy Guide

MRY

April
2022



Alex Arkink



Bernard

BERNARD 15/4/2011

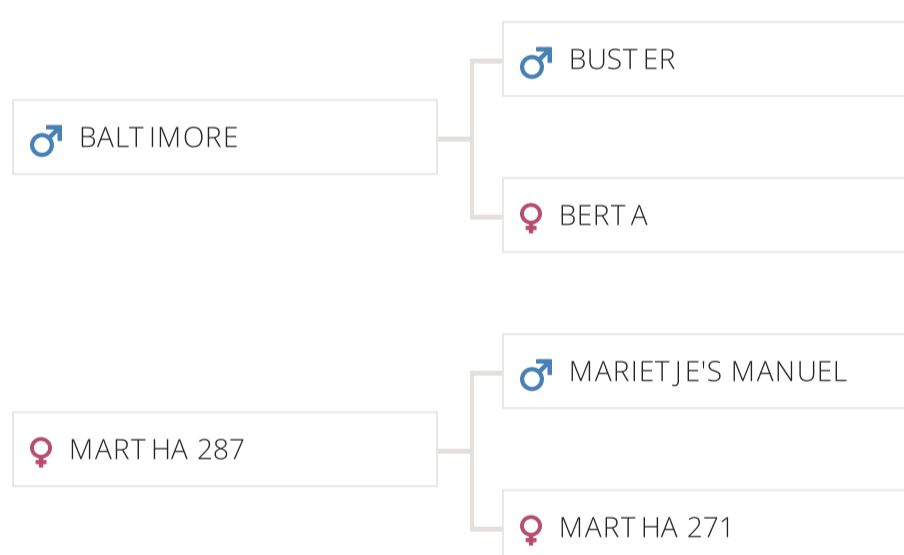


- ▶ High components
- ▶ Dam with > 74,000 kgM and 4.02% protein

Sire Information

Sire ID	NL 549833008
AI Code NL	940859
AI Code DE	298481
AI Code NZ	517684
Born	15/04/2011
Color	Unknown
Beta casein	A1A1
aAa Code	354126

Pedigree



Dual Purpose

CRV Health

Trait	Breedi...
Fertility	104
+6% Udder health	101
Hoof health	102

CRV Efficiency

Trait	Breedi...
INET	-36
+1% Longevity	218

Total index

NVI
56

Production traits

Milk...	% F	% P	Fat (...	P (kg)
-526	0.39	0.23	0	-6

233 daughters, 113 herds, reliability: 90%

Conformation traits

Trait	Breedi...	Comparison
Frame	105	
Dairy stren...	103	
Udder	103	
Feet and le...	101	
Muscularity	102	
Total Type	104	

91 daughters, 48 herds, reliability: 85%

Linear traits

Trait	Breedi...	Comparison
Stature	101	
Strength	101	
Body depth	102	
Angularity	101	
Condition s...	100	
Rump angle	104	
Rump width	103	
Rear legs r...	100	
Rear legs si...	103	
Foot angle	97	
Locomotion	102	
Fore udder ...	103	
Front teat ...	104	
Teat length	90	
Udder depth	104	
Rear udder ...	96	
Rear teat pl...	103	
Central Lig...	105	

Daughter Management traits

Trait	Breedi...	Comparison
Ketosis	107	
Milking spe...	106	
Somatic cell...	99	
Temperam...	107	
Daughter C...	112	
Persistency	101	
Maturity R...	103	

Sire Management traits

Trait	Breedi...	Comparison
Sire calving...	99	
Vitality	103	
Calf survival	101	
Beef index	97	

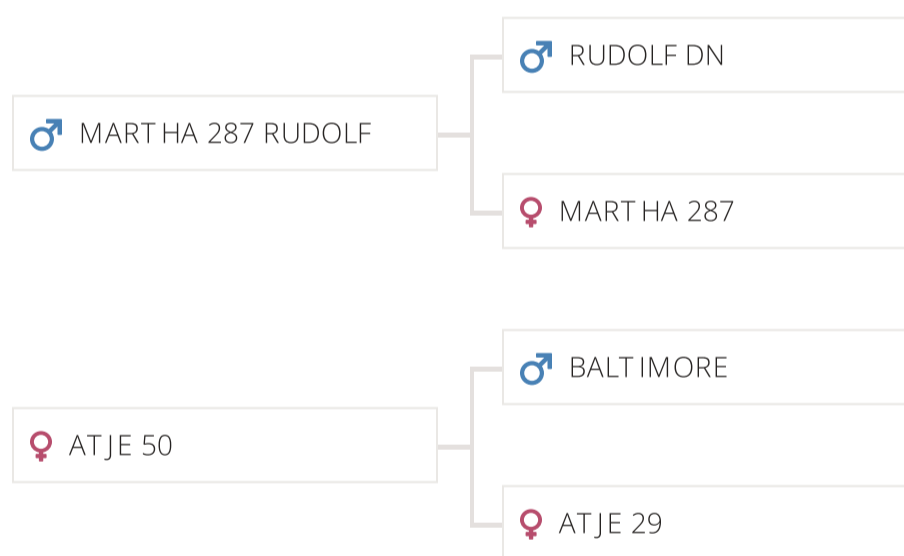


- ▶ Lineback bull with MRY pedigree
- ▶ Allround profile
- ▶ High for daughter calving ease

Sire Information

Sire ID	NL 691450593
AI Code NL	942209
Born	17/04/2018
Color	Lineback Red
Beta casein	A1A1
Kappa casein	BB
aAa Code	561342

Pedigree



Dual Purpose

CRV Health

Trait	Breedi...
Fertility	100
Udder health	102
Hoof health	102

+2%

CRV Efficiency

Trait	Breedi...
INET	16
Longevity	124

+2%

Total index

NVI	45
-----	----

Production traits

Milk...	% F	% P	Fat (...	P (kg)
43	0.06	-0.01	6	1

Reliability: 38%

Conformation traits

Trait	Breedi...	Comparison
Frame	101	
Dairy stren...	103	
Udder	101	
Feet and le...	103	
Muscularity	103	
Total Type	103	

Reliability: 35%

Linear traits

Trait	Breedi...	Comparison
Stature	102	
Strength	101	
Body depth	100	
Angularity	99	
Condition s...	103	
Rump angle	100	
Rump width	100	
Rear legs r...	102	
Rear legs si...	99	
Foot angle	100	
Locomotion	103	
Fore udder ...	103	
Front teat ...	99	
Teat length	97	
Udder depth	103	
Rear udder ...	99	
Rear teat pl...	99	
Central Lig...	100	

Daughter Management traits

Trait	Breedi...	Comparison
Ketosis	103	
Milking spe...	103	
Somatic cell...	100	
Temperam...	102	
Daughter C...	108	
Persistency	105	
Maturity R...	103	

Sire Management traits

Trait	Breedi...	Comparison
Sire calving...	93	
Vitality	98	
Calf survival	102	
Beef index	99	

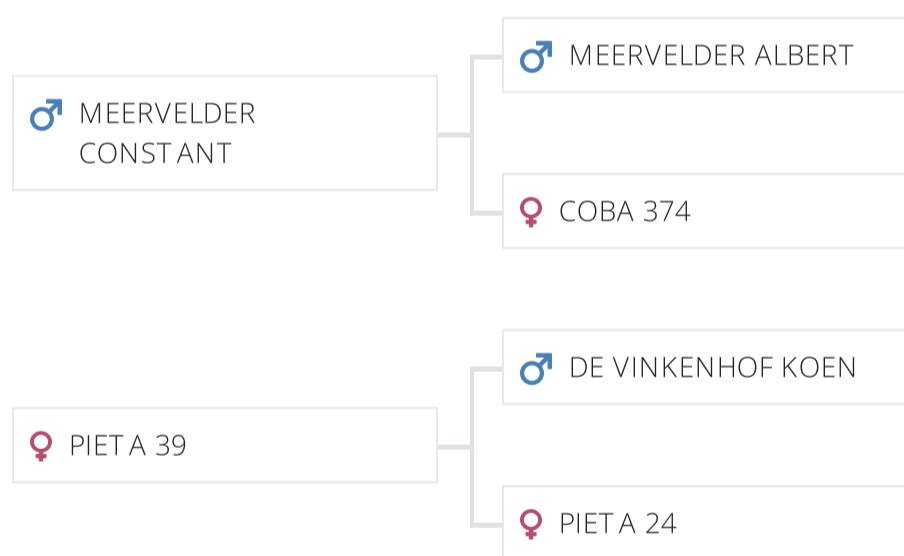


- ▶ Real MRY type
- ▶ Nice red coloured bull
- ▶ Strong udders and F&L

Sire Information

Sire ID	NL 623130425
AI Code NL	942139
Born	04/08/2017
Color	Red & White
Beta casein	A1A2
Kappa casein	AB
aAa Code	543621

Pedigree



Dual Purpose

CRV Health

Trait	Breedi...
Fertility	101
Udder health	101
Hoof health	100

+1%

CRV Efficiency

Trait	Breedi...
INET	29
Longevity	238

+4%

Total index

NVI
75

Production traits

Milk...	% F	% P	Fat (...	P (kg)
-80	0.34	0.03	18	-1

Reliability: 38%

Conformation traits

Trait	Breedi...	Comparison
Frame	104	
Dairy stren...	103	
Udder	104	
Feet and le...	103	
Muscularity	100	
Total Type	105	

Reliability: 38%

Linear traits

Trait	Breedi...	Comparison
Stature	101	
Strength	101	
Body depth	105	
Angularity	108	
Condition s...	97	
Rump angle	102	
Rump width	102	
Rear legs r...	102	
Rear legs si...	99	
Foot angle	102	
Locomotion	103	
Fore udder ...	99	
Front teat ...	102	
Teat length	98	
Udder depth	100	
Rear udder ...	104	
Rear teat pl...	104	
Central Lig...	106	

Daughter Management traits

Trait	Breedi...	Comparison
Ketosis	100	
Milking spe...	101	
Somatic cell...	97	
Temperam...	102	
Daughter C...	102	
Persistency	98	
Maturity R...	98	

Sire Management traits

Trait	Breedi...	Comparison
Sire calving...	101	
Vitality	104	
Calf survival	101	
Beef index	98	

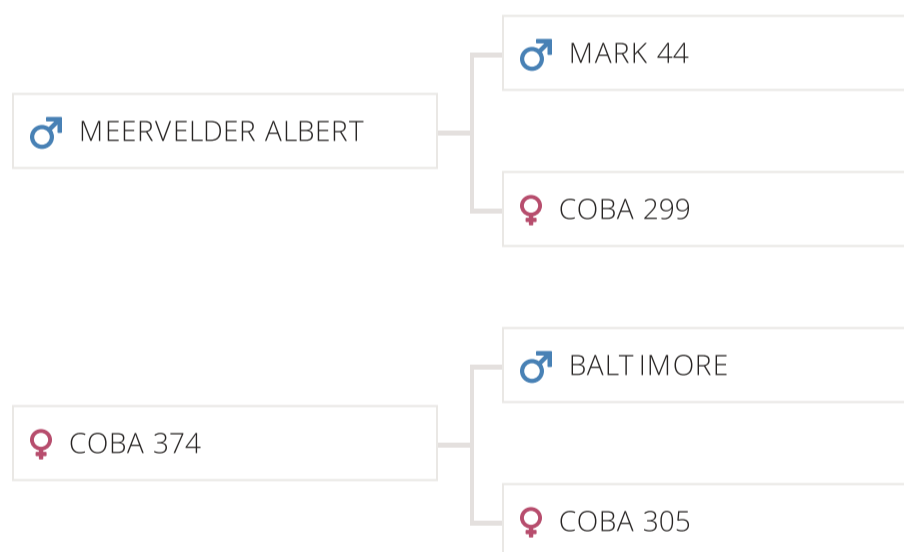


- ▶ Strong udders
- ▶ Allround conformation

Sire Information

Sire ID	NL 873571533
AI Code NL	941433
Born	15/12/2013
Color	Red & White
Beta casein	A2A2
Kappa casein	AB
aAa Code	531462

Pedigree



Dual Purpose

CRV Health

Trait	Breedi...
Fertility	99
Udder health	98
Hoof health	99

0%

CRV Efficiency

Trait	Breedi...
INET	40
Longevity	285

+4%

Total index

NVI
40

Production traits

Milk...	% F	% P	Fat (...	P (kg)
-160	0.48	0.09	23	0

273 daughters, 109 herds, reliability: 91%

Conformation traits

Trait	Breedi...	Comparison
Frame	104	
Dairy stren...	100	
Udder	106	
Feet and le...	102	
Muscularity	97	
Total Type	104	

111 daughters, 48 herds, reliability: 85%

Daughter Management traits

Trait	Breedi...	Comparison
Ketosis	100	
Milking spe...	102	
Somatic cell...	95	
Temperam...	101	
Daughter C...	105	
Persistency	97	
Maturity R...	97	

Linear traits

Trait	Breedi...	Comparison
Stature	101	
Strength	98	
Body depth	106	
Angularity	111	
Condition s...	92	
Rump angle	102	
Rump width	104	
Rear legs r...	102	
Rear legs si...	98	
Foot angle	102	
Locomotion	102	
Fore udder ...	98	
Front teat ...	103	
Teat length	96	
Udder depth	99	
Rear udder ...	109	
Rear teat pl...	107	
Central Lig...	109	

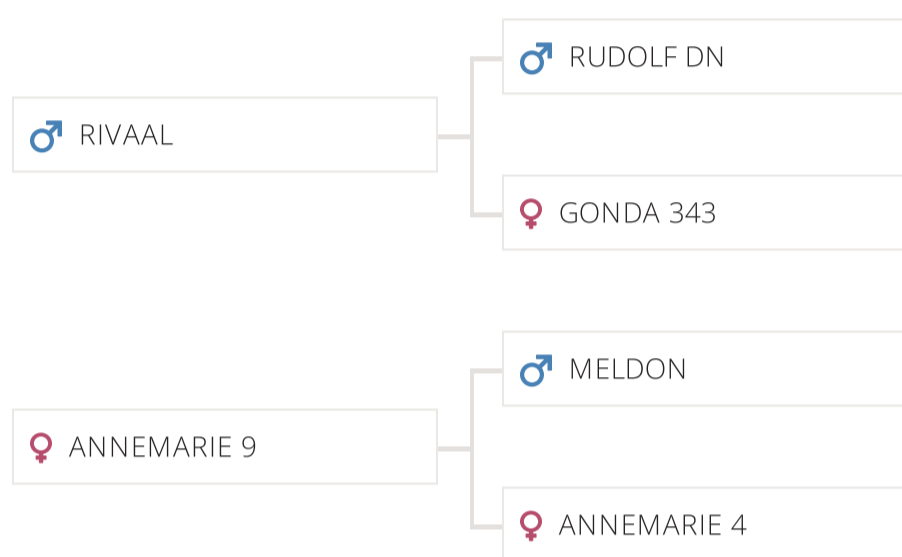
Sire Management traits

Trait	Breedi...	Comparison
Sire calving...	97	
Vitality	101	
Calf survival	100	
Beef index	94	

Sire Information

Sire ID	NL 658102240
AI Code NL	941858
Born	09/03/2016
Color	Red & White
Beta casein	A1A2
Kappa casein	AB
aAa Code	435261

Pedigree



Dual Purpose



CRV Health

Trait	Breedi...
Fertility	98
-4% Udder health	100
Hoof health	98



CRV Efficiency

Trait	Breedi...
INET	72
+3% Longevity	121

Total index

NVI
28

Production traits

Milk...	% F	% P	Fat (...	P (kg)
160	0.20	0.02	20	7

52 daughters, 31 herds, reliability: 79%

Conformation traits

Trait	Breedi...	Comparison
Frame	107	
Dairy stren...	106	
Udder	105	
Feet and le...	97	
Muscularity	106	
Total Type	105	

18 daughters, 11 herds, reliability: 69%

Linear traits

Trait	Breedi...	Comparison
Stature	106	
Strength	104	
Body depth	102	
Angularity	99	
Condition s...	105	
Rump angle	105	
Rump width	102	
Rear legs r...	98	
Rear legs si...	98	
Foot angle	99	
Locomotion	98	
Fore udder ...	104	
Front teat ...	102	
Teat length	96	
Udder depth	106	
Rear udder ...	103	
Rear teat pl...	101	
Central Lig...	100	

Daughter Management traits

Trait	Breedi...	Comparison
Ketosis	106	
Milking spe...	94	
Somatic cell...	96	
Temperam...	99	
Daughter C...	105	
Persistency	99	
Maturity R...	95	

Sire Management traits

Trait	Breedi...	Comparison
Sire calving...	86	
Vitality	88	
Calf survival	100	
Beef index	103	

DIK TROM

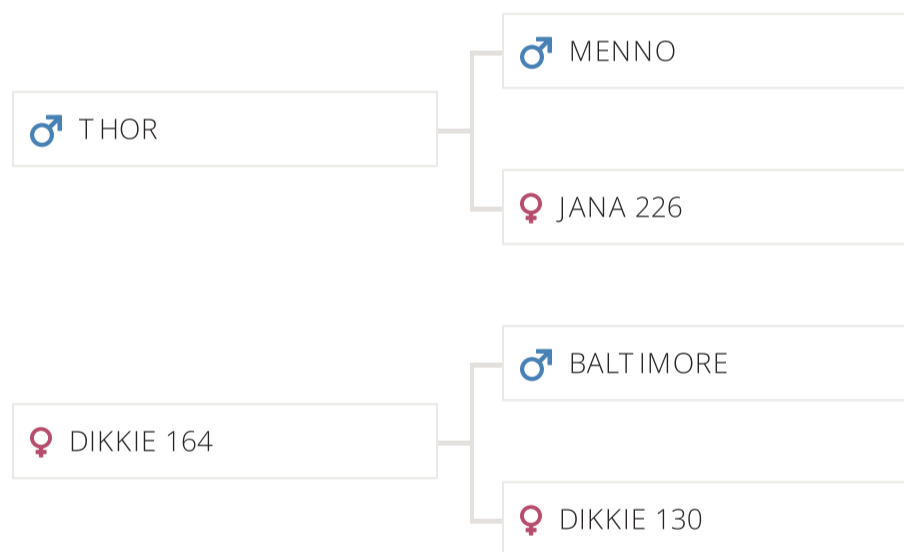


- ▶ High daughter fertility
- ▶ Strong udders and legs
- ▶ Real MRY-profile with muscularity

Sire Information

Sire ID	NL 643195002
AI Code NL	942259
Born	03/05/2018
Color	Red & White
Beta casein	A1A1
Kappa casein	AB
aAa Code	426351

Pedigree



Dual Purpose

CRV Health

Trait	Breedi...
Fertility	103
+4% Udder health	103
Hoof health	100

CRV Efficiency

Trait	Breedi...
INET	-17
+1% Longevity	132

Total index

NVI
97

Production traits

Milk...	% F	% P	Fat (...	P (kg)
-139	0.11	0.02	1	-4

Reliability: 41%

Conformation traits

Trait	Breedi...	Comparison
Frame	100	
Dairy stren...	100	
Udder	104	
Feet and le...	106	
Muscularity	100	
Total Type	105	

Reliability: 41%

Linear traits

Trait	Breedi...	Comparison
Stature	102	
Strength	100	
Body depth	101	
Angularity	102	
Condition s...	101	
Rump angle	102	
Rump width	97	
Rear legs r...	105	
Rear legs si...	101	
Foot angle	100	
Locomotion	106	
Fore udder ...	103	
Front teat ...	101	
Teat length	99	
Udder depth	103	
Rear udder ...	101	
Rear teat pl...	103	
Central Lig...	104	

Daughter Management traits

Trait	Breedi...	Comparison
Ketosis	103	
Milking spe...	99	
Somatic cell...	100	
Temperam...	105	
Daughter C...	102	
Persistency	98	
Maturity R...	102	

Sire Management traits

Trait	Breedi...	Comparison
Sire calving...	101	
Vitality	109	
Calf survival	101	
Beef index	98	

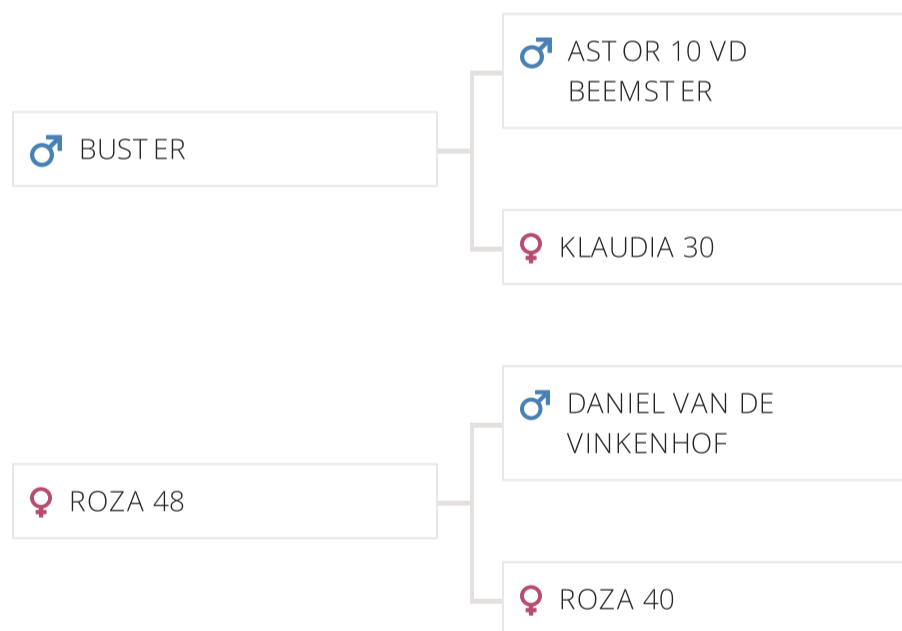


- ▶ Premium milk
- ▶ Low somatic cells
- ▶ Outcross pedigree

Sire Information

Sire ID	NL 534193632
AI Code NL	940185
AI Code DE	298397
Born	16/06/2009
Color	Red & White
Beta casein	A1A1
Kappa casein	BB

Pedigree



Dual Purpose

CRV Health

Trait	Breedi...
Fertility	102
Udder health	109
Hoof health	105

+3%

CRV Efficiency

Trait	Breedi...
INET	-87
Longevity	543

+2%

Total index

NVI	146
-----	-----

Production traits

Milk...	% F	% P	Fat (...	P (kg)
-561	0.32	0.08	-6	-16

505 daughters, 205 herds, reliability: 93%

Conformation traits

Trait	Breedi...	Comparison
Frame	98	
Dairy stren...	102	
Udder	105	
Feet and le...	105	
Muscularity	102	
Total Type	105	

210 daughters, 77 herds, reliability: 89%

Linear traits

Trait	Breedi...	Comparison
Stature	97	
Strength	106	
Body depth	105	
Angularity	102	
Condition s...	100	
Rump angle	88	
Rump width	100	
Rear legs r...	105	
Rear legs si...	105	
Foot angle	97	
Locomotion	105	
Fore udder ...	102	
Front teat ...	99	
Teat length	103	
Udder depth	105	
Rear udder ...	101	
Rear teat pl...	105	
Central Lig...	106	

Daughter Management traits

Trait	Breedi...	Comparison
Ketosis	101	
Milking spe...	97	
Somatic cell...	107	
Temperam...	102	
Daughter C...	106	
Persistency	98	
Maturity R...	105	

Sire Management traits

Trait	Breedi...	Comparison
Sire calving...	94	
Vitality	95	
Calf survival	103	
Beef index	103	

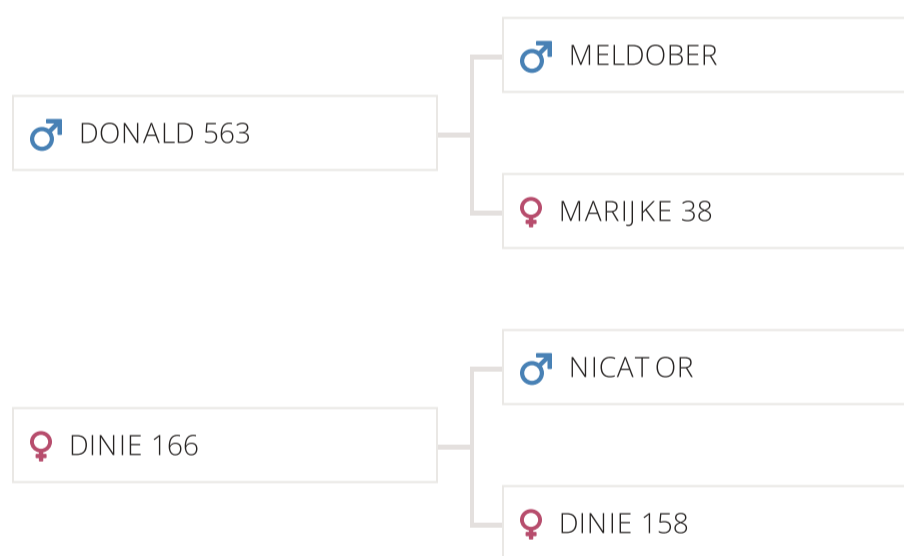


- ▶ Breed leader for milk
- ▶ Great efficiency
- ▶ Udder health

Sire Information

Sire ID	NL 735968325
AI Code NL	940858
Born	30/06/2011
Color	Red & White
Beta casein	A1A1
Kappa casein	AB
aAa Code	645213

Pedigree



Dual Purpose

CRV Health

Trait	Breedi...
Fertility	102
-1 % Udder health	101
Hoof health	95

CRV Efficiency

Trait	Breedi...
INET	87
+6 % Longevity	422

Total index

NVI	75
-----	----

Production traits

Milk...	% F	% P	Fat (...	P (kg)
899	-0.52	-0.21	2	18

322 daughters, 160 herds, reliability: 93%

Conformation traits

Trait	Breedi...	Comparison
Frame	96	
Dairy stren...	97	
Udder	98	
Feet and le...	101	
Muscularity	100	
Total Type	98	

107 daughters, 45 herds, reliability: 85%

Linear traits

Trait	Breedi...	Comparison
Stature	98	
Strength	101	
Body depth	95	
Angularity	94	
Condition s...	102	
Rump angle	98	
Rump width	97	
Rear legs r...	102	
Rear legs si...	95	
Foot angle	101	
Locomotion	102	
Fore udder ...	101	
Front teat ...	103	
Teat length	93	
Udder depth	99	
Rear udder ...	98	
Rear teat pl...	95	
Central Lig...	98	

Daughter Management traits

Trait	Breedi...	Comparison
Ketosis	103	
Milking spe...	97	
Somatic cell...	100	
Temperam...	104	
Daughter C...	99	
Persistency	108	
Maturity R...	103	

Sire Management traits

Trait	Breedi...	Comparison
Sire calving...	101	
Vitality	105	
Calf survival	102	
Beef index	99	

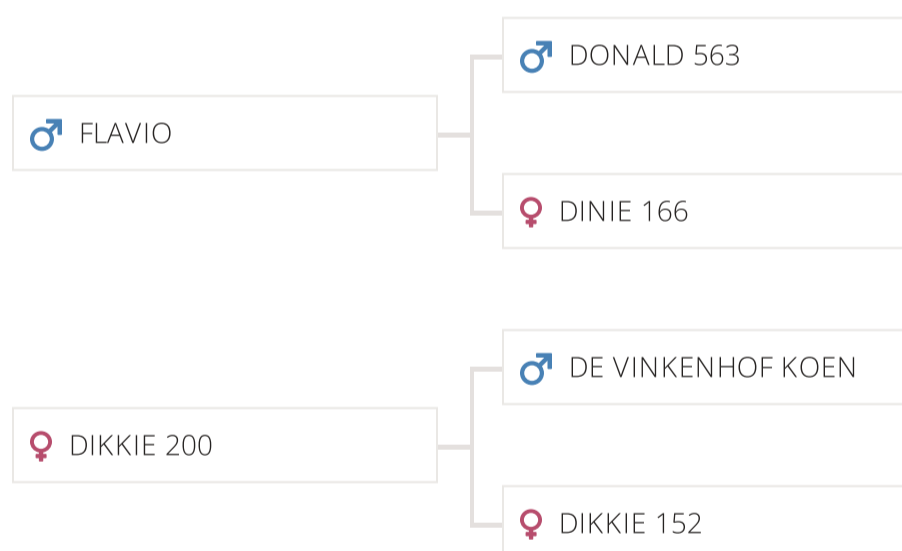


- ▶ Efficient producing daughters
- ▶ Persistence producing
- ▶ Longevity

Sire Information

Sire ID	NL 546697076
AI Code NL	942391
Born	27/12/2018
Color	Red & White
Beta casein	A1A2
Kappa casein	AB
aAa Code	453621

Pedigree



Dual Purpose

CRV Health

Trait	Breedi...
Fertility	100
Udder health	101
Hoof health	98

0%

CRV Efficiency

Trait	Breedi...
INET	112
Longevity	317

+6%

Total index

NVI
91

Production traits

Milk...	% F	% P	Fat (...	P (kg)
738	-0.29	-0.11	12	19

Reliability: 41%

Conformation traits

Trait	Breedi...	Comparison
Frame	100	
Dairy stren...	100	
Udder	101	
Feet and le...	103	
Muscularity	101	
Total Type	102	

Reliability: 41%

Linear traits

Trait	Breedi...	Comparison
Stature	99	
Strength	101	
Body depth	99	
Angularity	98	
Condition s...	101	
Rump angle	100	
Rump width	100	
Rear legs r...	103	
Rear legs si...	98	
Foot angle	101	
Locomotion	103	
Fore udder ...	100	
Front teat ...	102	
Teat length	97	
Udder depth	101	
Rear udder ...	101	
Rear teat pl...	99	
Central Lig...	101	

Daughter Management traits

Trait	Breedi...	Comparison
Ketosis	102	
Milking spe...	99	
Somatic cell...	98	
Temperam...	104	
Daughter C...	100	
Persistency	104	
Maturity R...	100	

Sire Management traits

Trait	Breedi...	Comparison
Sire calving...	101	
Vitality	102	
Calf survival	103	
Beef index	100	

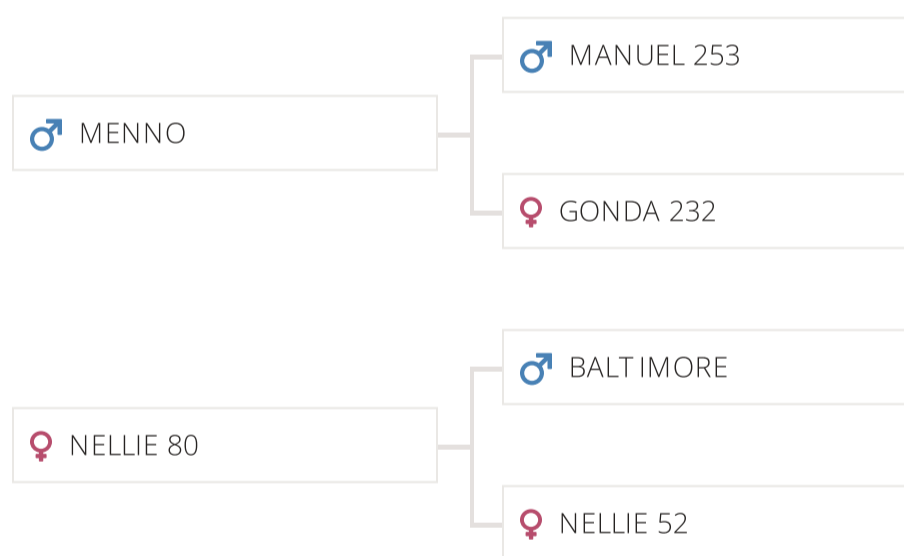


- ▶ 87.5% MRV & 12.5% HF
- ▶ kg fat & protein
- ▶ Great efficiency

Sire Information

Sire ID	NL 655839042
AI Code NL	941638
Born	01/12/2014
Color	Red & White
Beta casein	A1A2
Kappa casein	AB
aAa Code	435261

Pedigree



Dual Purpose

CRV Health

Trait	Breedi...
Fertility	101
Udder health	105
Hoof health	106

+3%

CRV Efficiency

Trait	Breedi...
INET	-6
Longevity	205

+2%

Total index

NVI
177

Production traits

Milk...	% F	% P	Fat (...	P (kg)
7	-0.08	0.01	-5	1

180 daughters, 87 herds, reliability: 88%

Conformation traits

Trait	Breedi...	Comparison
Frame	101	
Dairy stren...	106	
Udder	116	
Feet and le...	110	
Muscularity	104	
Total Type	114	

72 daughters, 37 herds, reliability: 82%

Linear traits

Trait	Breedi...	Comparison
Stature	111	
Strength	105	
Body depth	107	
Angularity	104	
Condition s...	104	
Rump angle	82	
Rump width	103	
Rear legs r...	106	
Rear legs si...	96	
Foot angle	106	
Locomotion	110	
Fore udder ...	113	
Front teat ...	104	
Teat length	99	
Udder depth	110	
Rear udder ...	113	
Rear teat pl...	105	
Central Lig...	110	

Daughter Management traits

Trait	Breedi...	Comparison
Ketosis	107	
Milking spe...	101	
Somatic cell...	104	
Temperam...	103	
Daughter C...	99	
Persistency	103	
Maturity R...	107	

Sire Management traits

Trait	Breedi...	Comparison
Sire calving...	98	
Vitality	103	
Calf survival	102	
Beef index	98	

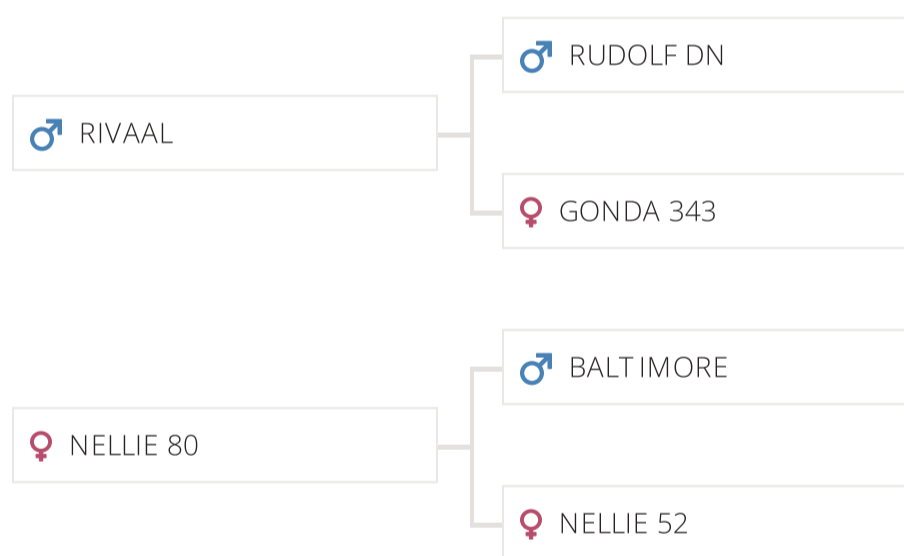


- ▶ Fat improver
- ▶ Udders
- ▶ SiryX available

Sire Information

Sire ID	NL 711639452
AI Code NL	941831
Born	09/01/2016
Color	Red & White
Beta casein	A2A2
Kappa casein	AB
aAa Code	435261

Pedigree



Dual Purpose

CRV Health

Trait	Breedi...
Fertility	101
+4% Udder health	103
Hoof health	104

CRV Efficiency

Trait	Breedi...
INET	171
+6% Longevity	235

Total index

NVI	198
-----	-----

Production traits

Milk...	% F	% P	Fat (...	P (kg)
299	0.37	0.16	38	22

124 daughters, 65 herds, reliability: 83%

Conformation traits

Trait	Breedi...	Comparison
Frame	98	
Dairy stren...	93	
Udder	113	
Feet and le...	106	
Muscularity	95	
Total Type	106	

35 daughters, 18 herds, reliability: 75%

Linear traits

Trait	Breedi...	Comparison
Stature	111	
Strength	93	
Body depth	102	
Angularity	106	
Condition s...	93	
Rump angle	97	
Rump width	96	
Rear legs r...	106	
Rear legs si...	93	
Foot angle	103	
Locomotion	107	
Fore udder ...	108	
Front teat ...	102	
Teat length	93	
Udder depth	109	
Rear udder ...	111	
Rear teat pl...	109	
Central Lig...	111	

Daughter Management traits

Trait	Breedi...	Comparison
Ketosis	106	
Milking spe...	101	
Somatic cell...	103	
Temperam...	106	
Daughter C...	109	
Persistency	104	
Maturity R...	97	

Sire Management traits

Trait	Breedi...	Comparison
Sire calving...	98	
Vitality	100	
Calf survival	103	
Beef index	97	

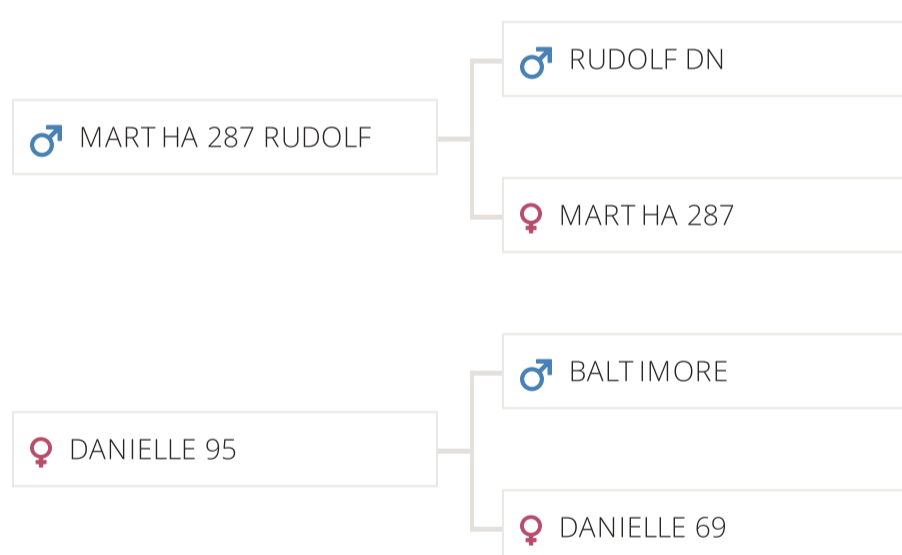


- ▶ High in efficiency
- ▶ Dam EX93

Sire Information

Sire ID	NL 562604542
AI Code NL	942136
AI Code DE	298500
Born	12/10/2017
Color	Red & White
Beta casein	A1A2
Kappa casein	AA
aAa Code	462531

Pedigree



Dual Purpose

CRV Health

Trait	Breedi...
Fertility	102
+3% Udder health	103
Hoof health	102

CRV Efficiency

Trait	Breedi...
INET	52
+4% Longevity	192

Total index

NVI
102

Production traits

Milk...	% F	% P	Fat (...	P (kg)
142	0.07	0.03	11	7

Reliability: 43%

Conformation traits

Trait	Breedi...	Comparison
Frame	101	
Dairy stren...	102	
Udder	105	
Feet and le...	104	
Muscularity	103	
Total Type	105	

Reliability: 43%

Linear traits

Trait	Breedi...	Comparison
Stature	103	
Strength	99	
Body depth	99	
Angularity	99	
Condition s...	102	
Rump angle	101	
Rump width	101	
Rear legs r...	103	
Rear legs si...	99	
Foot angle	100	
Locomotion	104	
Fore udder ...	104	
Front teat ...	100	
Teat length	98	
Udder depth	106	
Rear udder ...	102	
Rear teat pl...	102	
Central Lig...	103	

Daughter Management traits

Trait	Breedi...	Comparison
Ketosis	105	
Milking spe...	105	
Somatic cell...	101	
Temperam...	104	
Daughter C...	108	
Persistency	103	
Maturity R...	105	

Sire Management traits

Trait	Breedi...	Comparison
Sire calving...	101	
Vitality	96	
Calf survival	103	
Beef index	98	

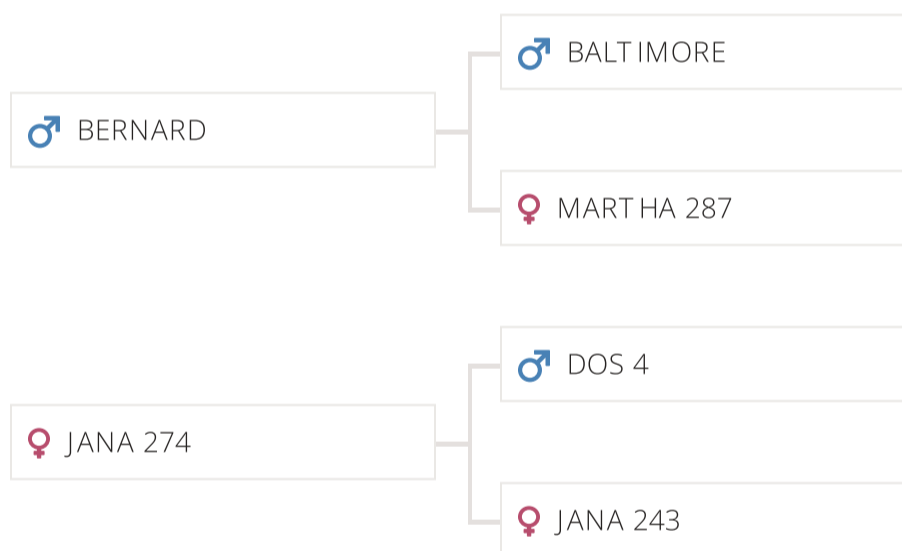


- ▶ Suitable for heifers
- ▶ Extreme high for fat and protein
- ▶ High daughter fertility

Sire Information

Sire ID	NL 671841133
AI Code NL	942258
Born	24/04/2018
Color	Red & White
Beta casein	A1A1
Kappa casein	BB

Pedigree



Dual Purpose

CRV Health

Trait	Breedi...
Fertility	103
+4% Udder health	100
Hoof health	103

CRV Efficiency

Trait	Breedi...
INET	59
+3% Longevity	228

Total index

NVI
97

Production traits

Milk...	% F	% P	Fat (...	P (kg)
55	0.13	0.11	11	9

Reliability: 40%

Conformation traits

Trait	Breedi...	Comparison
Frame	106	
Dairy stren...	104	
Udder	105	
Feet and le...	103	
Muscularity	103	
Total Type	106	

Reliability: 41%

Linear traits

Trait	Breedi...	Comparison
Stature	104	
Strength	102	
Body depth	103	
Angularity	103	
Condition s...	101	
Rump angle	102	
Rump width	103	
Rear legs r...	101	
Rear legs si...	101	
Foot angle	100	
Locomotion	103	
Fore udder ...	104	
Front teat ...	103	
Teat length	96	
Udder depth	105	
Rear udder ...	100	
Rear teat pl...	102	
Central Lig...	104	

Daughter Management traits

Trait	Breedi...	Comparison
Ketosis	105	
Milking spe...	103	
Somatic cell...	98	
Temperam...	102	
Daughter C...	107	
Persistency	100	
Maturity R...	100	

Sire Management traits

Trait	Breedi...	Comparison
Sire calving...	98	
Vitality	97	
Calf survival	100	
Beef index	99	

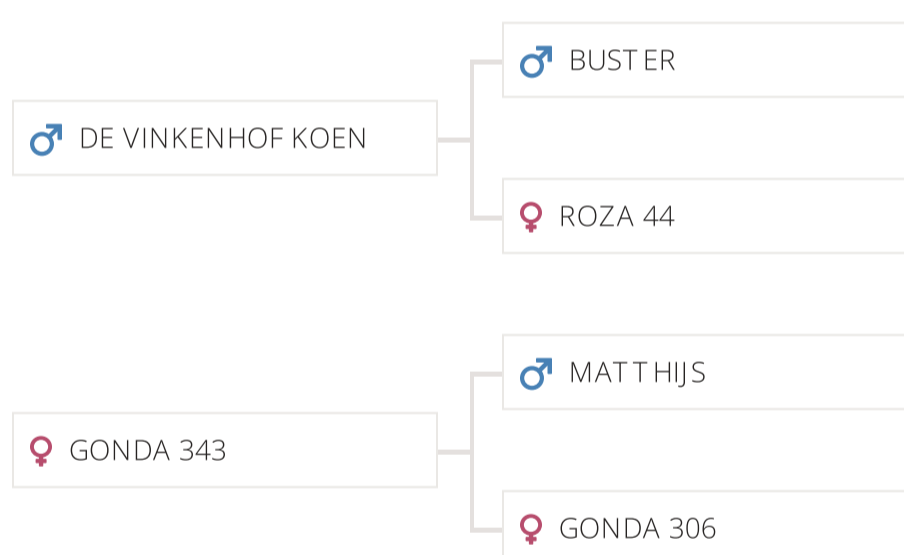


- ▶ Udders
- ▶ Feet & Legs

Sire Information

Sire ID	NL 892393071
AI Code NL	941916
Born	20/09/2016
Color	Red & White
Beta casein	A2A2
Kappa casein	AA
aAa Code	534162

Pedigree



Dual Purpose

CRV Health

Trait	Breedi...
Fertility	99
-3% Udder health	98
Hoof health	99

CRV Efficiency

Trait	Breedi...
INET	195
+7% Longevity	252

Total index

NVI
90

Production traits

Milk...	% F	% P	Fat (...	P (kg)
725	0.25	-0.09	50	20

68 daughters, 43 herds, reliability: 80%

Conformation traits

Trait	Breedi...	Comparison
Frame	102	
Dairy stren...	101	
Udder	101	
Feet and le...	104	
Muscularity	99	
Total Type	103	

26 daughters, 15 herds, reliability: 74%

Daughter Management traits

Trait	Breedi...	Comparison
Ketosis	98	
Milking spe...	102	
Somatic cell...	95	
Temperam...	101	
Daughter C...	98	
Persistency	100	
Maturity R...	99	

Linear traits

Trait	Breedi...	Comparison
Stature	101	
Strength	101	
Body depth	104	
Angularity	105	
Condition s...	99	
Rump angle	103	
Rump width	97	
Rear legs r...	103	
Rear legs si...	103	
Foot angle	97	
Locomotion	104	
Fore udder ...	99	
Front teat ...	101	
Teat length	96	
Udder depth	101	
Rear udder ...	101	
Rear teat pl...	103	
Central Lig...	102	

Sire Management traits

Trait	Breedi...	Comparison
Sire calving...	96	
Vitality	96	
Calf survival	105	
Beef index	100	

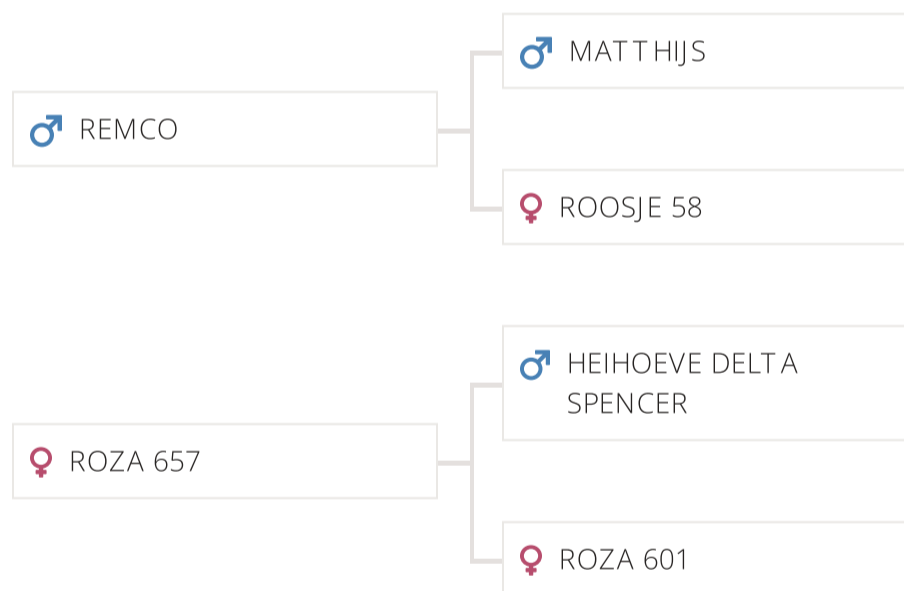


- ▶ 50% HF - 50% MRY
- ▶ Great production improver
- ▶ Udders

Sire Information

Sire ID	NL 636711163
AI Code NL	941404
Born	22/11/2013
Color	Red & White
Beta casein	A1A2
Kappa casein	AB
aAa Code	243615

Pedigree



Dual Purpose

CRV Health

Trait	Breedi...
Fertility	96
-2% Udder health	104
Hoof health	99

CRV Efficiency

Trait	Breedi...
INET	272
+6% Longevity	75

Total index

NVI	82
-----	----

Production traits

Milk...	% F	% P	Fat (...	P (kg)
887	0.14	0.07	50	38

221 daughters, 98 herds, reliability: 95%

Conformation traits

Trait	Breedi...	Comparison
Frame	92	
Dairy stren...	85	
Udder	111	
Feet and le...	95	
Muscularity	84	
Total Type	95	

74 daughters, 35 herds, reliability: 88%

Linear traits

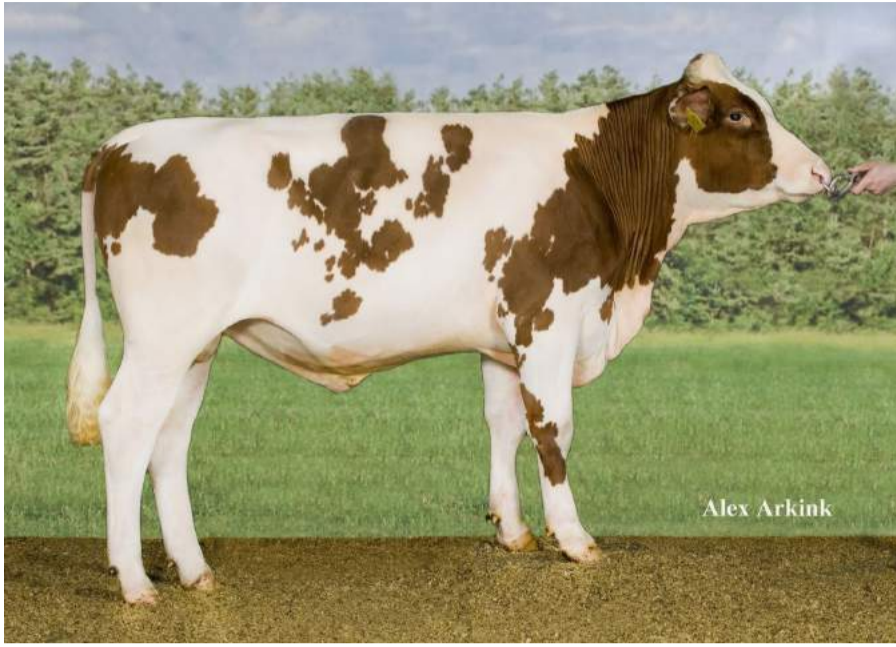
Trait	Breedi...	Comparison
Stature	98	
Strength	87	
Body depth	101	
Angularity	107	
Condition s...	84	
Rump angle	98	
Rump width	96	
Rear legs r...	94	
Rear legs si...	99	
Foot angle	100	
Locomotion	97	
Fore udder ...	97	
Front teat ...	110	
Teat length	100	
Udder depth	99	
Rear udder ...	118	
Rear teat pl...	110	
Central Lig...	109	

Daughter Management traits

Trait	Breedi...	Comparison
Ketosis	100	
Milking spe...	98	
Somatic cell...	100	
Temperam...	93	
Daughter C...	89	
Persistency	101	
Maturity R...	101	

Sire Management traits

Trait	Breedi...	Comparison
Sire calving...	99	
Vitality	101	
Calf survival	97	
Beef index	92	

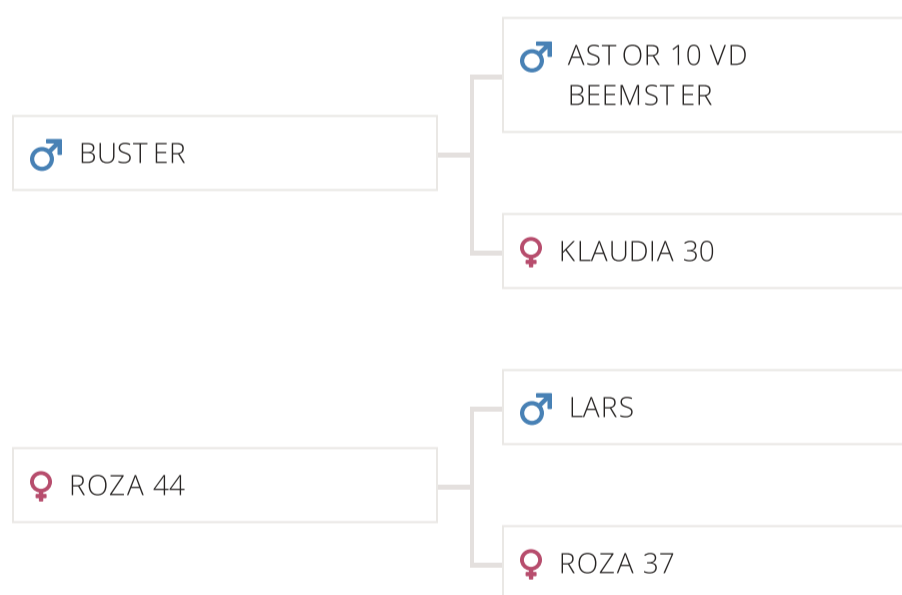


- ▶ High production
- ▶ Nice frames
- ▶ Healthy udders

Sire Information

Sire ID	NL 538593209
AI Code NL	940106
AI Code DE	298344
Born	17/02/2009
Color	Red & White
Beta casein	A2A2
Kappa casein	AB

Pedigree



Dual Purpose

CRV Health

Trait	Breedi...
Fertility	101
-3% Udder health	104
Hoof health	99

CRV Efficiency

Trait	Breedi...
INET	38
+3% Longevity	240

Total index

NVI	70
-----	----

Production traits

Milk...	% F	% P	Fat (...	P (kg)
45	0.08	0.07	7	6

779 daughters, 203 herds, reliability: 92%

Conformation traits

Trait	Breedi...	Comparison
Frame	105	
Dairy stren...	103	
Udder	99	
Feet and le...	104	
Muscularity	103	
Total Type	104	

359 daughters, 91 herds, reliability: 91%

Linear traits

Trait	Breedi...	Comparison
Stature	102	
Strength	106	
Body depth	107	
Angularity	105	
Condition s...	100	
Rump angle	102	
Rump width	100	
Rear legs r...	102	
Rear legs si...	102	
Foot angle	103	
Locomotion	104	
Fore udder ...	95	
Front teat ...	99	
Teat length	94	
Udder depth	99	
Rear udder ...	99	
Rear teat pl...	103	
Central Lig...	104	

Daughter Management traits

Trait	Breedi...	Comparison
Ketosis	100	
Milking spe...	103	
Somatic cell...	100	
Temperam...	107	
Daughter C...	97	
Persistency	98	
Maturity R...	100	

Sire Management traits

Trait	Breedi...	Comparison
Sire calving...	87	
Vitality	97	
Calf survival	105	
Beef index	101	

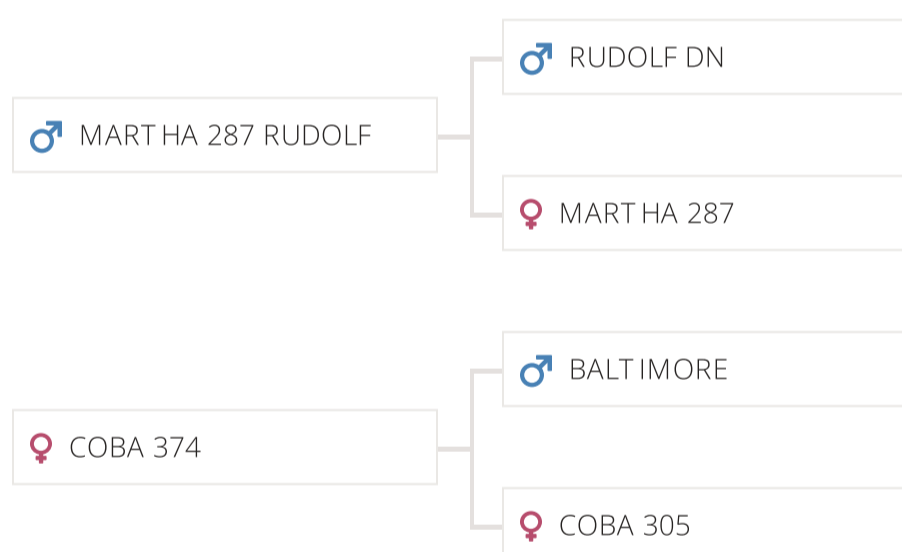


- ▶ Dam VG85 with 5.15% Fat and 3.97% protein
- ▶ Lots of kg fat and protein
- ▶ Strong in legs

Sire Information

Sire ID	NL 638976973
AI Code NL	942286
Born	26/07/2018
Color	Red & White
Beta casein	A1A1
Kappa casein	BB

Pedigree



Dual Purpose

CRV Health

Trait	Breedi...
Fertility	101
Udder health	101
Hoof health	102

+3%

CRV Efficiency

Trait	Breedi...
INET	95
Longevity	242

+5%

Total index

NVI	83
-----	----

Production traits

Milk...	% F	% P	Fat (...	P (kg)
164	0.25	0.08	24	11

Reliability: 42%

Conformation traits

Trait	Breedi...	Comparison
Frame	103	
Dairy stren...	103	
Udder	102	
Feet and le...	103	
Muscularity	103	
Total Type	104	

Reliability: 43%

Daughter Management traits

Trait	Breedi...	Comparison
Ketosis	108	
Milking spe...	106	
Somatic cell...	100	
Temperam...	102	
Daughter C...	105	
Persistency	102	
Maturity R...	103	

Linear traits

Trait	Breedi...	Comparison
Stature	103	
Strength	100	
Body depth	102	
Angularity	101	
Condition s...	101	
Rump angle	101	
Rump width	102	
Rear legs r...	102	
Rear legs si...	99	
Foot angle	101	
Locomotion	103	
Fore udder ...	102	
Front teat ...	98	
Teat length	98	
Udder depth	104	
Rear udder ...	100	
Rear teat pl...	100	
Central Lig...	101	

Sire Management traits

Trait	Breedi...	Comparison
Sire calving...	93	
Vitality	102	
Calf survival	104	
Beef index	97	

LAKE

DE VINKENHOF LAKE

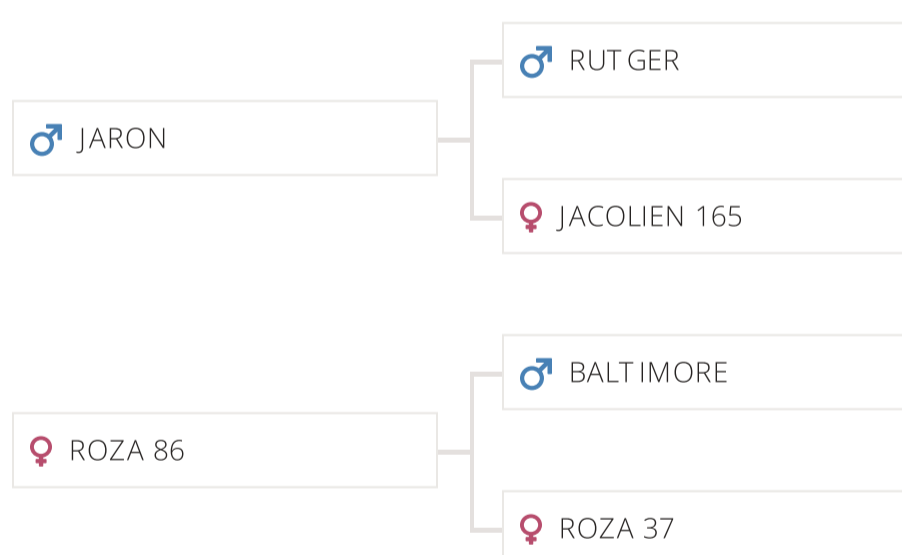


- ▶ Nice colored MRV bull
- ▶ Fat improver
- ▶ Efficiency

Sire Information

Sire ID	NL 658102156
AI Code NL	941886
AI Code DE	298499
Born	20/04/2016
Color	Red & White
Beta casein	A1A2
Kappa casein	AB
aAa Code	435261

Pedigree



Dual Purpose

CRV Health

Trait	Breedi...
Fertility	100
Udder health	104
Hoof health	104

+3%

CRV Efficiency

Trait	Breedi...
INET	-41
Longevity	100

0%

Total index

NVI	-14
-----	-----

Production traits

Milk...	% F	% P	Fat (...	P (kg)
-425	0.28	0.14	-2	-7

86 daughters, 45 herds, reliability: 80%

Conformation traits

Trait	Breedi...	Comparison
Frame	95	
Dairy stren...	97	
Udder	100	
Feet and le...	96	
Muscularity	98	
Total Type	96	

18 daughters, 13 herds, reliability: 68%

Linear traits

Trait	Breedi...	Comparison
Stature	97	
Strength	98	
Body depth	99	
Angularity	101	
Condition s...	99	
Rump angle	100	
Rump width	95	
Rear legs r...	97	
Rear legs si...	108	
Foot angle	87	
Locomotion	100	
Fore udder ...	99	
Front teat ...	101	
Teat length	100	
Udder depth	98	
Rear udder ...	97	
Rear teat pl...	102	
Central Lig...	104	

Daughter Management traits

Trait	Breedi...	Comparison
Ketosis	102	
Milking spe...	102	
Somatic cell...	101	
Temperam...	102	
Daughter C...	109	
Persistency	101	
Maturity R...	100	

Sire Management traits

Trait	Breedi...	Comparison
Sire calving...	101	
Vitality	97	
Calf survival	103	
Beef index	98	

MIRAKEL P

New

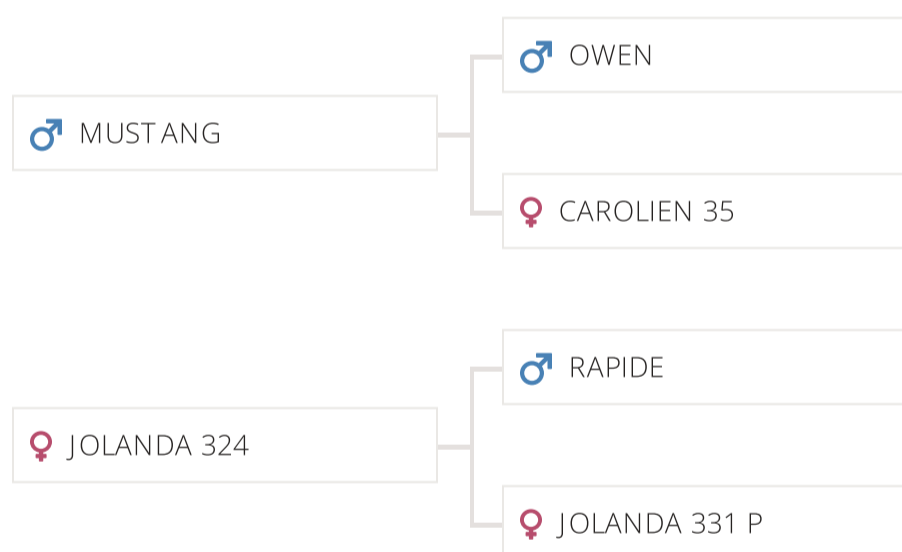


- ▶ Heterozygous polled
- ▶ Milk
- ▶ Udders

Sire Information

Sire ID	NL 629998007
AI Code NL	942506
Born	21/01/2020
Color	Red & White
Beta casein	A1A1
Kappa casein	AB
aAa Code	645231

Pedigree



Dual Purpose

CRV Health

Trait	Breedi...
Fertility	100
+2% Udder health	102
Hoof health	102

CRV Efficiency

Trait	Breedi...
INET	90
+4% Longevity	124

Total index

NVI
97

Production traits

Milk...	% F	% P	Fat (...	P (kg)
496	-0.06	-0.10	18	11

Reliability: 40%

Conformation traits

Trait	Breedi...	Comparison
Frame	101	
Dairy stren...	101	
Udder	108	
Feet and le...	100	
Muscularity	101	
Total Type	104	

Reliability: 39%

Linear traits

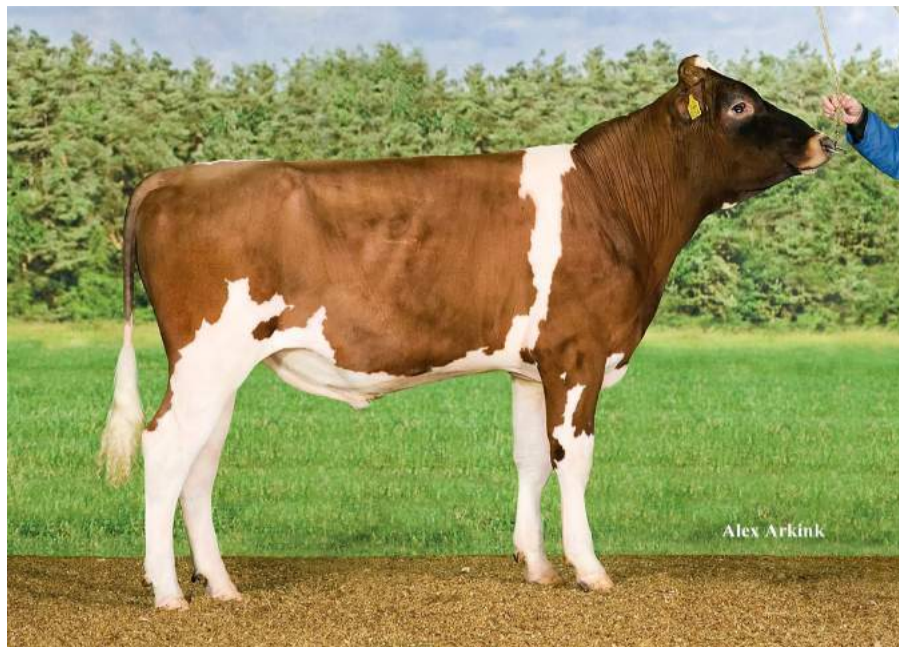
Trait	Breedi...	Comparison
Stature	102	
Strength	100	
Body depth	99	
Angularity	100	
Condition s...	101	
Rump angle	99	
Rump width	102	
Rear legs r...	99	
Rear legs si...	101	
Foot angle	98	
Locomotion	101	
Fore udder ...	107	
Front teat ...	105	
Teat length	104	
Udder depth	106	
Rear udder ...	105	
Rear teat pl...	99	
Central Lig...	102	

Daughter Management traits

Trait	Breedi...	Comparison
Ketosis	102	
Milking spe...	99	
Somatic cell...	96	
Temperam...	101	
Daughter C...	107	
Persistency	105	
Maturity R...	101	

Sire Management traits

Trait	Breedi...	Comparison
Sire calving...	99	
Vitality	104	
Calf survival	101	
Beef index	99	

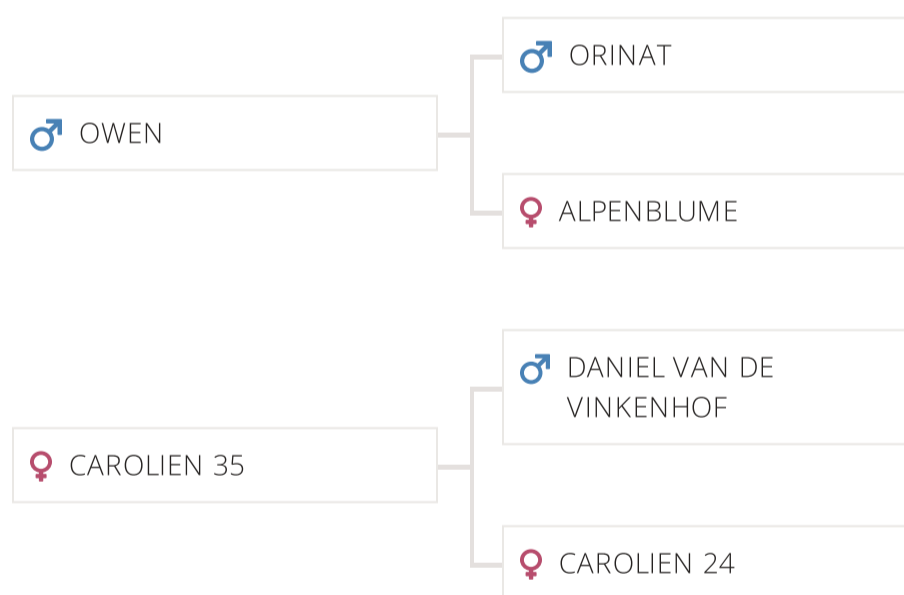


- ▶ Strong MRY cows
- ▶ High production
- ▶ Well attached udders
- ▶ Muscularity

Sire Information

Sire ID	NL 933192348
AI Code NL	940955
Born	27/12/2011
Color	Red & White
Beta casein	A1A2
Kappa casein	AB
aAa Code	432516

Pedigree



Dual Purpose

CRV Health

Trait	Breedi...
Fertility	101
Udder health	100
Hoof health	103

+3%

CRV Efficiency

Trait	Breedi...
INET	77
Longevity	164

+5%

Total index

NVI	77
-----	----

Production traits

Milk...	% F	% P	Fat (...	P (kg)
190	0.22	0.00	23	7

225 daughters, 108 herds, reliability: 90%

Conformation traits

Trait	Breedi...	Comparison
Frame	101	
Dairy stren...	103	
Udder	105	
Feet and le...	98	
Muscularity	103	
Total Type	103	

69 daughters, 29 herds, reliability: 82%

Linear traits

Trait	Breedi...	Comparison
Stature	101	
Strength	101	
Body depth	99	
Angularity	100	
Condition s...	102	
Rump angle	98	
Rump width	103	
Rear legs r...	97	
Rear legs si...	105	
Foot angle	94	
Locomotion	100	
Fore udder ...	107	
Front teat ...	107	
Teat length	111	
Udder depth	104	
Rear udder ...	104	
Rear teat pl...	97	
Central Lig...	99	

Daughter Management traits

Trait	Breedi...	Comparison
Ketosis	102	
Milking spe...	97	
Somatic cell...	95	
Temperam...	100	
Daughter C...	108	
Persistency	105	
Maturity R...	99	

Sire Management traits

Trait	Breedi...	Comparison
Sire calving...	98	
Vitality	104	
Calf survival	101	
Beef index	101	

PRIMEUR P

MEERVELDER PRIMEUR P

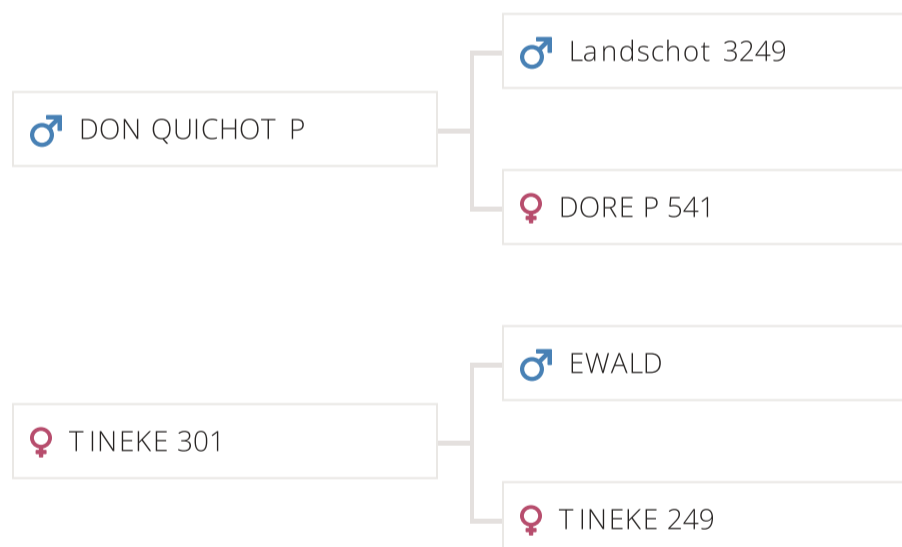


- ▶ Heterozygous polled bull
- ▶ 75% MRY, 25% HF
- ▶ Real dual purpose bull

Sire Information

Sire ID	NL 759275883
AI Code NL	942168
Born	11/08/2017
Color	Red & White
Beta casein	A1A2
Kappa casein	BB
aAa Code	435261

Pedigree



Dual Purpose

CRV Health

Trait	Breedi...
Fertility	102
Udder health	99
Hoof health	100

+1%

CRV Efficiency

Trait	Breedi...
INET	-3
Longevity	267

+3%

Total index

NVI	56
-----	----

Production traits

Milk...	% F	% P	Fat (...	P (kg)
-152	0.27	0.01	10	-5

Reliability: 25%

Conformation traits

Trait	Breedi...	Comparison
Frame	97	
Dairy stren...	99	
Udder	105	
Feet and le...	102	
Muscularity	97	
Total Type	102	

Reliability: 28%

Linear traits

Trait	Breedi...	Comparison
Stature	98	
Strength	98	
Body depth	101	
Angularity	103	
Condition s...	99	
Rump angle	94	
Rump width	101	
Rear legs r...	101	
Rear legs si...	103	
Foot angle	98	
Locomotion	102	
Fore udder ...	105	
Front teat ...	102	
Teat length	99	
Udder depth	103	
Rear udder ...	103	
Rear teat pl...	102	
Central Lig...	103	

Daughter Management traits

Trait	Breedi...	Comparison
Ketosis	97	
Milking spe...	105	
Somatic cell...	95	
Temperam...	102	
Daughter C...	101	
Persistency	99	
Maturity R...	101	

Sire Management traits

Trait	Breedi...	Comparison
Sire calving...	105	
Vitality	103	
Calf survival	101	
Beef index	97	

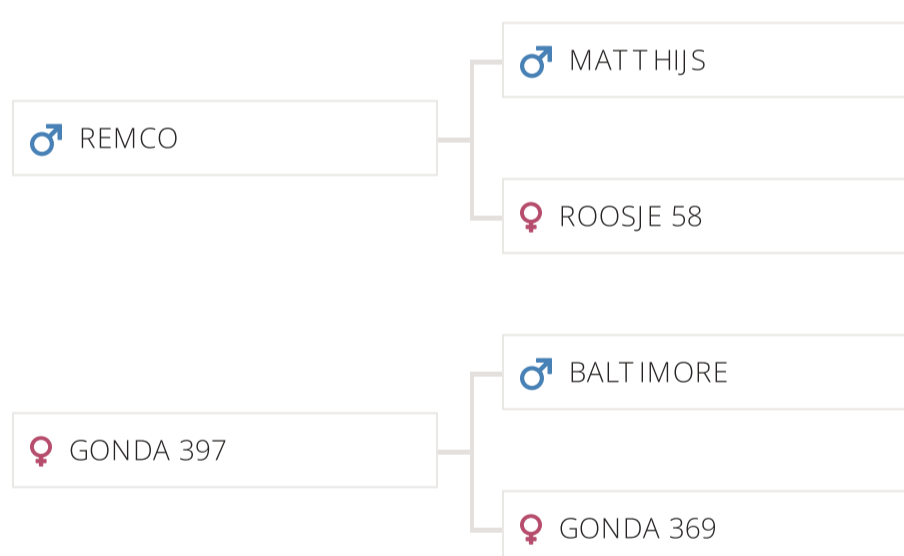


- ▶ Superb components
- ▶ Very good udders
- ▶ Calving ease

Sire Information

Sire ID	NL 844587967
AI Code NL	941517
AI Code DE	298566
Born	25/02/2014
Color	Red & White
Beta casein	A1A1
Kappa casein	BB
aAa Code	432561

Pedigree



Dual Purpose

CRV Health

Trait	Breedi...
Fertility	104
Udder health	103
Hoof health	99

+3%

CRV Efficiency

Trait	Breedi...
INET	66
Longevity	244

+3%

Total index

NVI
121

Production traits

Milk...	% F	% P	Fat (...	P (kg)
-341	0.53	0.37	17	10

71 daughters, 45 herds, reliability: 86%

Conformation traits

Trait	Breedi...	Comparison
Frame	102	
Dairy stren...	100	
Udder	107	
Feet and le...	101	
Muscularity	98	
Total Type	104	

30 daughters, 20 herds, reliability: 74%

Linear traits

Trait	Breedi...	Comparison
Stature	103	
Strength	99	
Body depth	102	
Angularity	107	
Condition s...	97	
Rump angle	102	
Rump width	100	
Rear legs r...	99	
Rear legs si...	103	
Foot angle	99	
Locomotion	102	
Fore udder ...	98	
Front teat ...	109	
Teat length	96	
Udder depth	100	
Rear udder ...	107	
Rear teat pl...	106	
Central Lig...	107	

Daughter Management traits

Trait	Breedi...	Comparison
Ketosis	103	
Milking spe...	101	
Somatic cell...	99	
Temperam...	98	
Daughter C...	99	
Persistency	98	
Maturity R...	98	

Sire Management traits

Trait	Breedi...	Comparison
Sire calving...	103	
Vitality	105	
Calf survival	102	
Beef index	98	

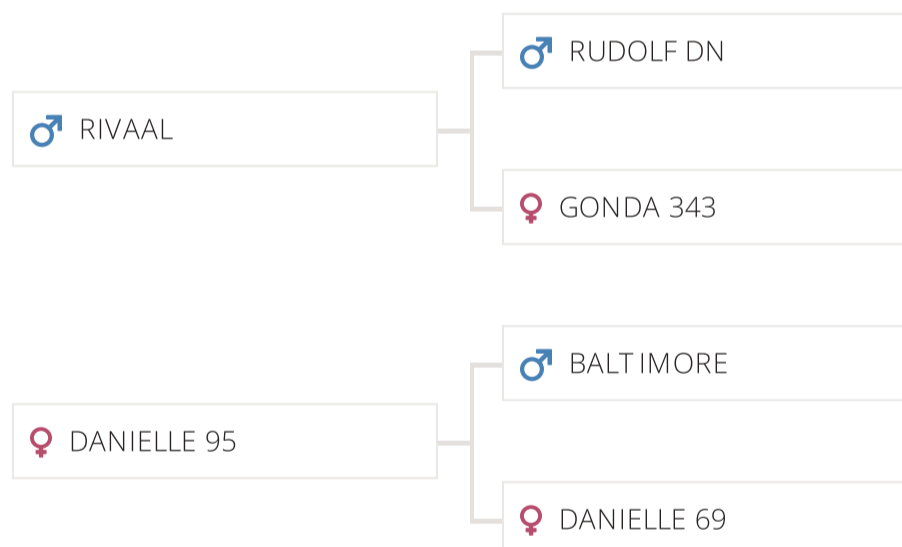


- ▶ Superb udders
- ▶ Excellent feet & legs
- ▶ aAa 516

Sire Information

Sire ID	NL 658101689
AI Code NL	941789
Born	16/11/2015
Color	Red & White
Beta casein	A1A2
Kappa casein	AA
aAa Code	516342

Pedigree



Dual Purpose

CRV Health

Trait	Breedi...
Fertility	98
Udder health	104
Hoof health	102

+1%

CRV Efficiency

Trait	Breedi...
INET	7
Longevity	118

+2%

Total index

NVI
103

Production traits

Milk...	% F	% P	Fat (...	P (kg)
41	0.14	-0.09	11	-4

194 daughters, 92 herds, reliability: 86%

Conformation traits

Trait	Breedi...	Comparison
Frame	102	
Dairy stren...	98	
Udder	113	
Feet and le...	105	
Muscularity	99	
Total Type	108	

78 daughters, 33 herds, reliability: 83%

Linear traits

Trait	Breedi...	Comparison
Stature	103	
Strength	96	
Body depth	99	
Angularity	102	
Condition s...	96	
Rump angle	106	
Rump width	102	
Rear legs r...	104	
Rear legs si...	99	
Foot angle	98	
Locomotion	105	
Fore udder ...	106	
Front teat ...	106	
Teat length	93	
Udder depth	109	
Rear udder ...	111	
Rear teat pl...	107	
Central Lig...	109	

Daughter Management traits

Trait	Breedi...	Comparison
Ketosis	103	
Milking spe...	99	
Somatic cell...	103	
Temperam...	104	
Daughter C...	106	
Persistency	98	
Maturity R...	101	

Sire Management traits

Trait	Breedi...	Comparison
Sire calving...	100	
Vitality	91	
Calf survival	101	
Beef index	97	

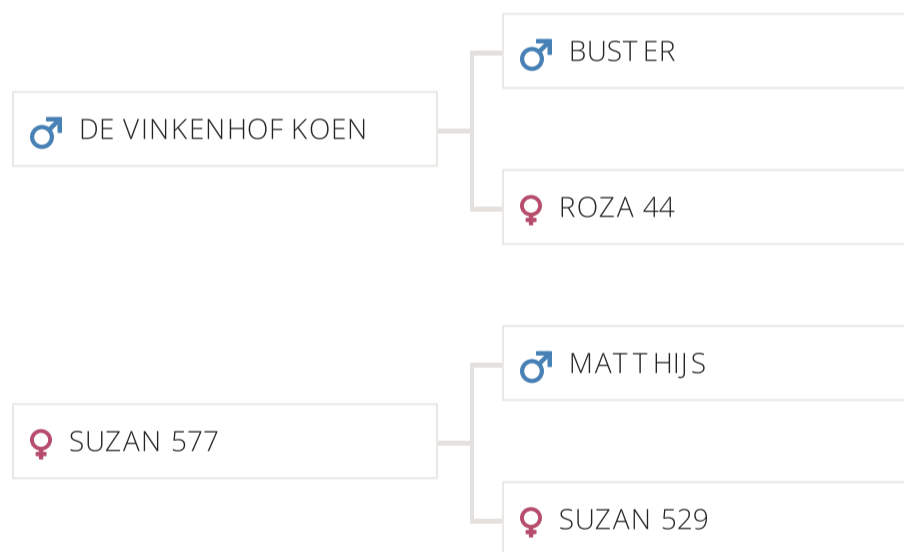


- ▶ Top NVI
- ▶ Great conformation

Sire Information

Sire ID	NL 732340056
AI Code NL	942113
AI Code DE	298501
Born	09/05/2017
Color	Red & White
Beta casein	A2A2
Kappa casein	AB
aAa Code	564132

Pedigree



Dual Purpose

CRV Health

Trait	Breedi...
Fertility	101
-2% Udder health	101
Hoof health	101

CRV Efficiency

Trait	Breedi...
INET	58
+4% Longevity	252

Total index

NVI
84

Production traits

Milk...	% F	% P	Fat (...	P (kg)
156	0.06	0.03	11	8

Reliability: 41%

Conformation traits

Trait	Breedi...	Comparison
Frame	105	
Dairy stren...	104	
Udder	105	
Feet and le...	104	
Muscularity	101	
Total Type	106	

3 daughters, 3 herds, reliability: 49%

Linear traits

Trait	Breedi...	Comparison
Stature	101	
Strength	104	
Body depth	105	
Angularity	104	
Condition s...	100	
Rump angle	99	
Rump width	103	
Rear legs r...	101	
Rear legs si...	101	
Foot angle	101	
Locomotion	104	
Fore udder ...	99	
Front teat ...	104	
Teat length	99	
Udder depth	103	
Rear udder ...	102	
Rear teat pl...	107	
Central Lig...	107	

Daughter Management traits

Trait	Breedi...	Comparison
Ketosis	102	
Milking spe...	102	
Somatic cell...	97	
Temperam...	105	
Daughter C...	96	
Persistency	98	
Maturity R...	99	

Sire Management traits

Trait	Breedi...	Comparison
Sire calving...	94	
Vitality	100	
Calf survival	103	
Beef index	99	

SATURNUS

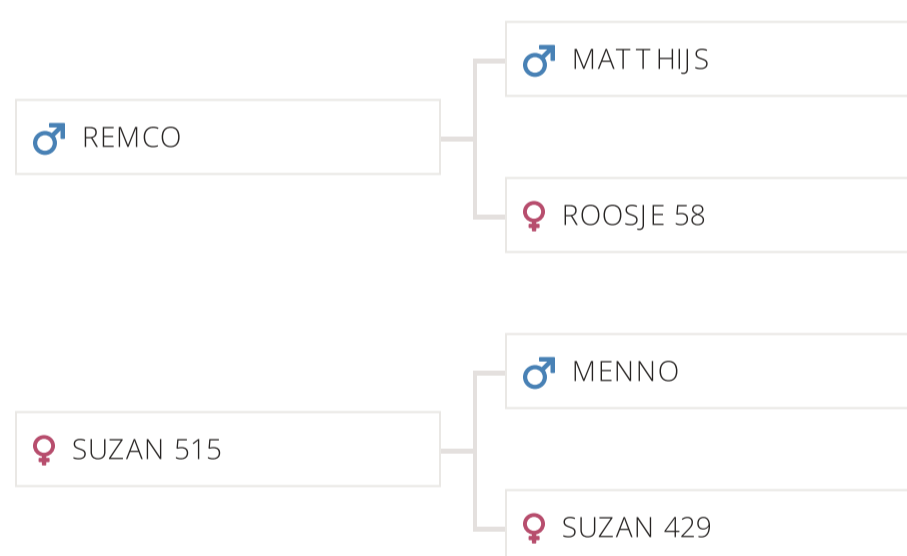


- ▶ Superb production transmitter
- ▶ Strong feet & legs
- ▶ Less ketosis

Sire Information

Sire ID	NL 844336338
AI Code NL	941553
Born	26/03/2014
Color	Red & White
Beta casein	A1A2
Kappa casein	AB
aAa Code	453612

Pedigree



Dual Purpose

CRV Health

Trait	Breedi...
Fertility	97
-2% Udder health	102
Hoof health	100

CRV Efficiency

Trait	Breedi...
+5% INET	197
Longevity	75

Total index

NVI	77
-----	----

Production traits

Milk...	% F	% P	Fat (...	P (kg)
237	0.49	0.24	43	25

80 daughters, 47 herds, reliability: 86%

Conformation traits

Trait	Breedi...	Comparison
Frame	97	
Dairy stren...	97	
Udder	103	
Feet and le...	105	
Muscularity	96	
Total Type	102	

30 daughters, 20 herds, reliability: 74%

Linear traits

Trait	Breedi...	Comparison
Stature	100	
Strength	99	
Body depth	103	
Angularity	106	
Condition s...	95	
Rump angle	93	
Rump width	97	
Rear legs r...	102	
Rear legs si...	97	
Foot angle	106	
Locomotion	105	
Fore udder ...	97	
Front teat ...	106	
Teat length	103	
Udder depth	95	
Rear udder ...	108	
Rear teat pl...	104	
Central Lig...	103	

Daughter Management traits

Trait	Breedi...	Comparison
Ketosis	106	
Milking spe...	94	
Somatic cell...	101	
Temperam...	100	
Daughter C...	91	
Persistency	105	
Maturity R...	101	

Sire Management traits

Trait	Breedi...	Comparison
Sire calving...	100	
Vitality	96	
Calf survival	98	
Beef index	96	

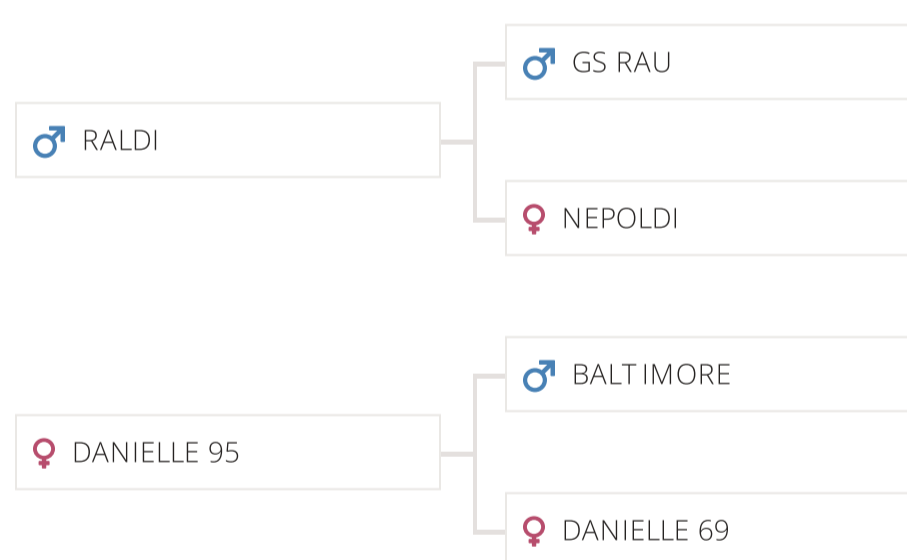


- ▶ 50% Fleckvieh & 50% MRV
- ▶ Dam EX93
- ▶ Dam with > 79,000 kgM and 5.23% fat, 4.04% protein

Sire Information

Sire ID	NL 730205690
AI Code NL	942358
Born	04/02/2019
Color	Red & White
Beta casein	A1A1
Kappa casein	AB
aAa Code	564123

Pedigree



Dual Purpose

CRV Health

Trait	Breedi...
Fertility	103
+4% Udder health	105
Hoof health	98

CRV Efficiency

Trait	Breedi...
INET	89
+6% Longevity	345

Total index

NVI
161

Production traits

Milk...	% F	% P	Fat (...	P (kg)
449	0.07	-0.12	25	8

Reliability: 44%

Conformation traits

Trait	Breedi...	Comparison
Frame	102	
Dairy stren...	104	
Udder	104	
Feet and le...	106	
Muscularity	105	
Total Type	107	

Reliability: 45%

Linear traits

Trait	Breedi...	Comparison
Stature	103	
Strength	103	
Body depth	103	
Angularity	102	
Condition s...	103	
Rump angle	100	
Rump width	98	
Rear legs r...	104	
Rear legs si...	99	
Foot angle	106	
Locomotion	105	
Fore udder ...	105	
Front teat ...	104	
Teat length	96	
Udder depth	104	
Rear udder ...	101	
Rear teat pl...	101	
Central Lig...	101	

Daughter Management traits

Trait	Breedi...	Comparison
Ketosis	100	
Milking spe...	104	
Somatic cell...	104	
Temperam...	105	
Daughter C...	111	
Persistency	101	
Maturity R...	104	

Sire Management traits

Trait	Breedi...	Comparison
Sire calving...	102	
Vitality	101	
Calf survival	101	
Beef index	99	

TUBANTER P

New

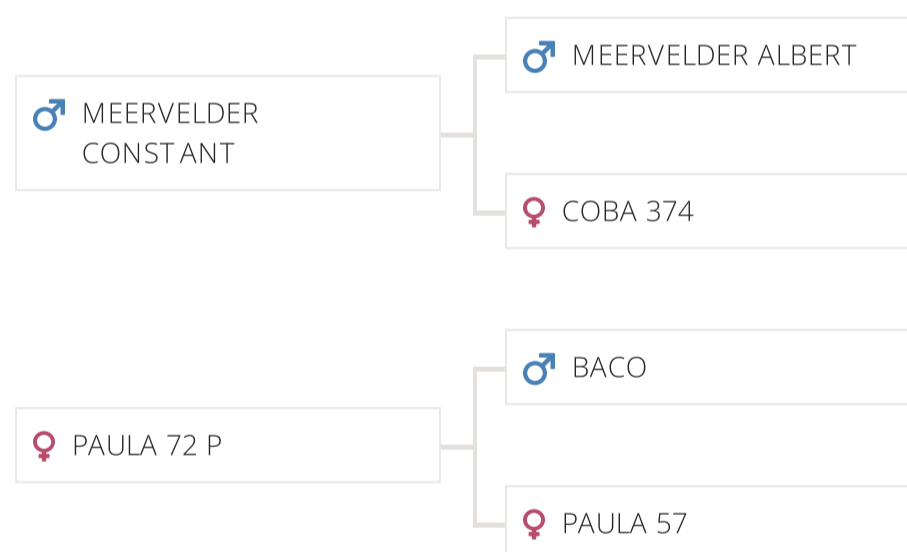


- ▶ Polled
- ▶ Great udderes
- ▶ Good components

Sire Information

Sire ID	NL 619875790
AI Code NL	942685
Born	04/11/2020
Color	Red & White
Beta casein	A1A2
Kappa casein	BB
aAa Code	465231

Pedigree



Dual Purpose

CRV Health

Trait	Breedi...
Fertility	99
+1% Udder health	100
Hoof health	101

CRV Efficiency

Trait	Breedi...
INET	124
+6% Longevity	293

Total index

NVI
87

Production traits

Milk...	% F	% P	Fat (...	P (kg)
261	0.30	0.07	32	14

Reliability: 40%

Conformation traits

Trait	Breedi...	Comparison
Frame	103	
Dairy stren...	101	
Udder	105	
Feet and le...	103	
Muscularity	98	
Total Type	104	

Reliability: 40%

Linear traits

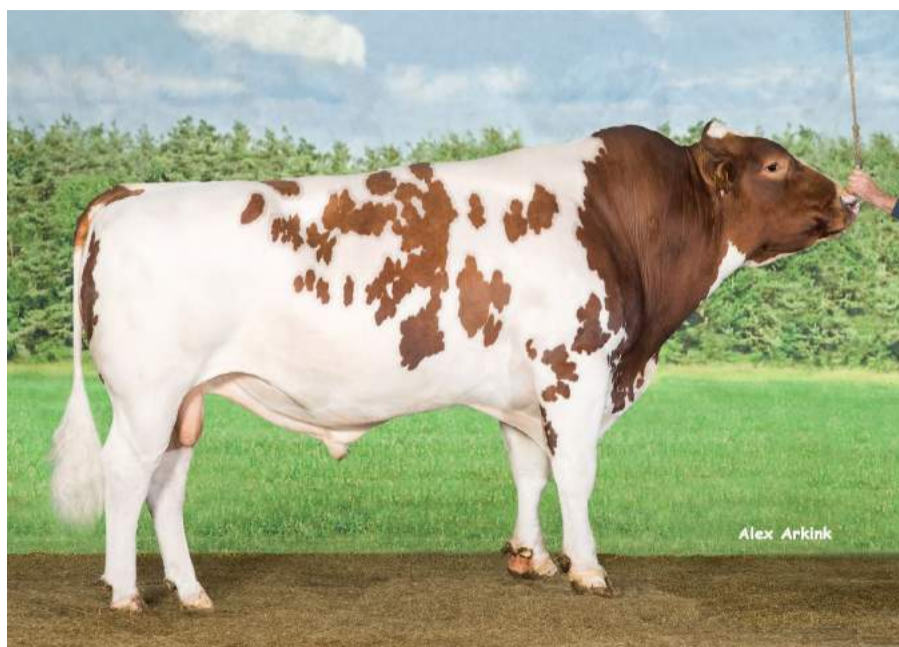
Trait	Breedi...	Comparison
Stature	101	
Strength	99	
Body depth	106	
Angularity	109	
Condition s...	95	
Rump angle	100	
Rump width	103	
Rear legs r...	102	
Rear legs si...	99	
Foot angle	100	
Locomotion	103	
Fore udder ...	100	
Front teat ...	103	
Teat length	97	
Udder depth	101	
Rear udder ...	106	
Rear teat pl...	104	
Central Lig...	106	

Daughter Management traits

Trait	Breedi...	Comparison
Ketosis	101	
Milking spe...	105	
Somatic cell...	97	
Temperam...	101	
Daughter C...	105	
Persistency	101	
Maturity R...	100	

Sire Management traits

Trait	Breedi...	Comparison
Sire calving...	99	
Vitality	102	
Calf survival	102	
Beef index	95	

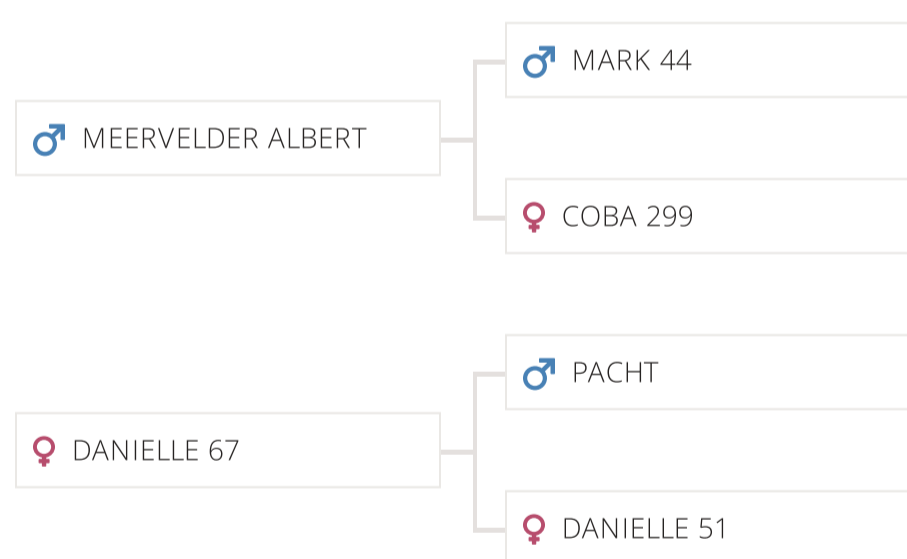


- ▶ Dam VG87 and >100,000 kgM with 3.85%P
- ▶ Highest type transmitter
- ▶ High components

Sire Information

Sire ID	NL 947098935
AI Code NL	941442
AI Code DE	298507
Born	25/11/2013
Color	Red & White
Beta casein	A1A1
Kappa casein	BB
aAa Code	432561

Pedigree



Dual Purpose

CRV Health

Trait	Breedi...
Fertility	95
Udder health	99
Hoof health	99

-2%

CRV Efficiency

Trait	Breedi...
INET	-48
Longevity	-82

-2%

Total index

NVI
-16

Production traits

Milk...	% F	% P	Fat (...	P (kg)
-555	0.37	0.21	-3	-8

85 daughters, 58 herds, reliability: 87%

Conformation traits

Trait	Breedi...	Comparison
Frame	101	
Dairy stren...	105	
Udder	103	
Feet and le...	106	
Muscularity	104	
Total Type	106	

25 daughters, 20 herds, reliability: 72%

Linear traits

Trait	Breedi...	Comparison
Stature	99	
Strength	106	
Body depth	105	
Angularity	102	
Condition s...	104	
Rump angle	93	
Rump width	100	
Rear legs r...	106	
Rear legs si...	96	
Foot angle	102	
Locomotion	106	
Fore udder ...	103	
Front teat ...	102	
Teat length	97	
Udder depth	102	
Rear udder ...	102	
Rear teat pl...	102	
Central Lig...	102	

Daughter Management traits

Trait	Breedi...	Comparison
Ketosis	100	
Milking spe...	95	
Somatic cell...	97	
Temperam...	101	
Daughter C...	103	
Persistency	101	
Maturity R...	97	

Sire Management traits

Trait	Breedi...	Comparison
Sire calving...	103	
Vitality	104	
Calf survival	101	
Beef index	99	

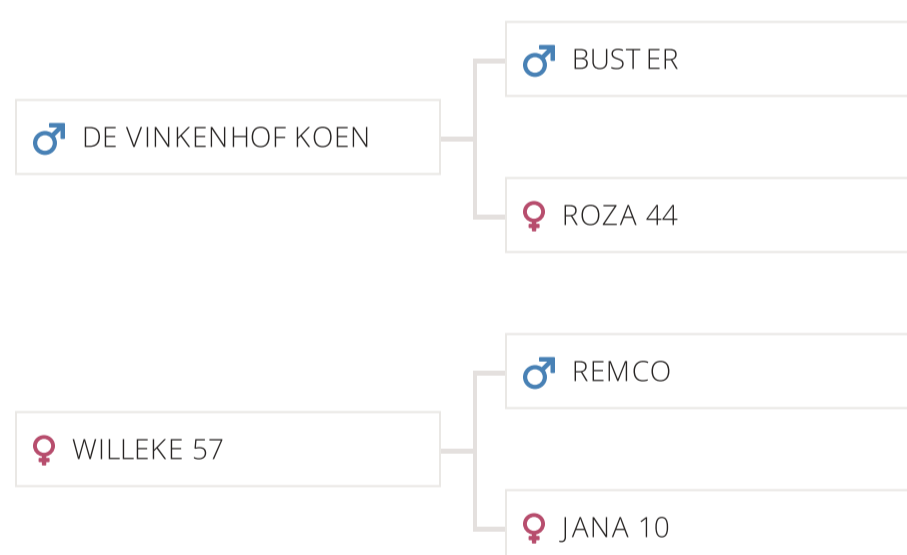


- ▶ 75% MRV, 19% HF and 6% BS
- ▶ Good udders
- ▶ Efficient daughters

Sire Information

Sire ID	NL 588631472
AI Code NL	942206
Born	22/02/2018
Color	Red & White
Beta casein	A1A2
Kappa casein	BB
aAa Code	531462

Pedigree



Dual Purpose

CRV Health

Trait	Breedi...
Fertility	100
Udder health	104
Hoof health	99

0%

CRV Efficiency

Trait	Breedi...
INET	100
Longevity	204

+4%

Total index

NVI
102

Production traits

Milk...	% F	% P	Fat (...	P (kg)
315	-0.04	0.09	11	18

Reliability: 38%

Conformation traits

Trait	Breedi...	Comparison
Frame	101	
Dairy stren...	100	
Udder	104	
Feet and le...	103	
Muscularity	99	
Total Type	103	

Reliability: 37%

Linear traits

Trait	Breedi...	Comparison
Stature	101	
Strength	102	
Body depth	105	
Angularity	106	
Condition s...	97	
Rump angle	99	
Rump width	98	
Rear legs r...	101	
Rear legs si...	103	
Foot angle	102	
Locomotion	103	
Fore udder ...	99	
Front teat ...	105	
Teat length	99	
Udder depth	100	
Rear udder ...	104	
Rear teat pl...	104	
Central Lig...	105	

Daughter Management traits

Trait	Breedi...	Comparison
Ketosis	102	
Milking spe...	101	
Somatic cell...	101	
Temperam...	102	
Daughter C...	97	
Persistency	99	
Maturity R...	101	

Sire Management traits

Trait	Breedi...	Comparison
Sire calving...	96	
Vitality	100	
Calf survival	101	
Beef index	99	