

2024

German Brown Swiss



BETTER COWS > BETTER LIFE



Breed: Brown Swiss
Breeder: Miller Hermann, 88484 Gutenzell-Huerbel/De
HB (DE): 435430

Insemination success: +1%
RBW freely available ♀

ANTONOV LU 299.518.743 109/109/+127+0,15+0,07	ANIBAY DE 08 15625951	ANIBAL	gGZW 113
MAJA DE 08 16434383 117/112/+360+0,01+0,05	NOUGAT DE 08 15720365	AG VANPARI	
	HARRISON DE 09 47303993	HARLEY	MW 113 FW 95 FIT 97 Conf. 114
	MANDY DE 08 15172522 5/4 8700-4,03-3,69-672	PAYBOY	

BREEDING VALUES (03.04.2024) PT **gGZW 113 (85)**

GZW -1, MW +0, FW -1, FIT -3, EXT -2

MILK **+334 +0,04 +17 +0,09 +20** **MW 113 (93)**

Section	Dau.	Mkg-F%-P%-FPkg	Herdø	Dau.	TD
100-d:	27	2689-3,92-3,50-200	9300	52	-
1st lact.:	7	7570-4,25-3,79-609	9260	52	4
2nd lact.:	0			1	5
3rd lact.:	0			0	0

BEEF **FW 95 (83)**

Net daily gain: 99 (89)	Carcass percentage: 97 (70)	EUROP trade class: 89 (77)
--------------------------------	------------------------------------	-----------------------------------

FITNESS **ÖZW 111 (87)** **FIT 97 (82)**

Longevity: 96 (70)	Udder health index: 101 (87)	Somatic cell count: 98 (86)	Mastitis: 101 (58)
Persistence: 109 (88)	Fertility index: 95 (70)	Claw health index: 95 (70)	Early fert. disorders: 94 (65)
Yield improvement: 113 (74)	Calving ease direct: 91 (93)	Calving ease maternal: 95 (79)	Cysts: 93 (63)
Milking speed: 95 (87)	Milking behaviour: 108 (61)	Calf vitality: 95 (84)	Milk fever: 99 (38)

CONFORMATION **35 daughters: 110 - 99 - 101 - 124 - Conf. 114 (92)**

Merkmal	Score	Qualitative	76	88	100	112	124	136	Qualitative
Frame	110								
Rump	99								
Feet & Legs	101								
Udder	124								
Final score	114								
Muscularity	82	weak							heavy
Cross height	121	small							large
Chest width	99	narrow							wide
Body depth	108	shallow							deep
Backline	98	weak							strong
Rump length	118	short							long
Rump width	96	narrow							wide
Rump angle	89	ascending							sloped
Thurl position	98	in the back							in the centre
Rear legs side view	93	straight							sickled
Hock quality	97	swollen							dry
Pasterns	102	weak							strong
Hoof height	117	low							high
Fore udder length	98	short							long
Rear udder width	95	narrow							wide
Rear udder height	117	low							high
Central ligament	96	weak							strong
Udder depth	129	deep							high
Fore udder attachment	111	loose							tight
Udder balance	106	staged							inclined
Teat length	98	short							long
Teat thickness	108	thin							thick
Front teat placement	113	wide							close
Rear teat placement	100	wide							close
Teat direction	100	outwards							inwards
Udder cleanness	100	add. teats							clean

Free of: ARF, B2F, SDF, SMF, WEF
Genetic charac.: Beta casein A2A2, Kappa casein BB





Breed: Brown Swiss
Breeder: Mueller Michael, 88410 Bad Wurzach/De
HB (DE): 435234
Insemination success: +0%
RBW freely available

ANIBAL CH 120.083.025.164 111/104/+136-0,04+0,03	VIGOR US 195.618	PRESIDENT ET	gGW 103
QUALI DE 08 15030038 100/105/+518-0,25-0,09 3/2 9609-3,80-3,62-713 2. 10843-3,59-3,69-789	ALLISON CH 120.022.128.345	MASCOT	
	PAYSSLI DE 08 13034326	PAYOFF	MW 110 FW 100 FIT 89 Conf. 114
	QUALI DE 08 14263189 2/2 7236-4,04-3,65-556	HURAY	

BREEDING VALUES (03.04.2024)

PT

gGW 103 (98)

GZW -2, MW +0, FW +0, FIT -1, EXT +0

MILK +396 -0,01 +16 -0,02 +13 **MW 110 (99)**

Section	Dau.	Mkg-F%-P%-FPkg	Herdø	Dau.	TD
100-d:	1285	2699-3,97-3,31-196	8497	2514	-
1st lact.:	1173	7371-4,14-3,51-564	8481	1378	9
2nd lact.:	873	8125-4,22-3,61-636	8430	1016	9
3rd lact.:	545	8723-4,23-3,56-679	8546	692	9

BEEF **FW 100 (96)**

Net daily gain:	104 (97)	Carcass percentage:	91 (91)	EUROP trade class:	97 (94)
------------------------	----------	----------------------------	---------	---------------------------	---------

FITNESS **ÖZW 102 (99)** **FIT 89 (98)**

Longevity:	94 (96)	Udder health index:	103 (99)	Somatic cell count:	105 (99)	Mastitis:	95 (91)
Persistence:	112 (99)	Fertility index:	77 (97)	Claw health index:	90 (95)	Early fert. disorders:	100 (96)
Yield improvement:	98 (99)	Calving ease direct:	97 (99)	Calving ease maternal:	102 (97)	Cysts:	87 (95)
Milking speed:	99 (99)	Milking behaviour:	113 (93)	Calf vitality:	100 (97)	Milk fever:	114 (94)

CONFORMATION 1475 daughters: 110 - 111 - 107 - 114 - Conf. 114 (99)

Merkmal	76	88	100	112	124	136
Frame						
Rump						
Feet & Legs						
Udder						
Final score						
Muscularity			95			heavy
Cross height			111			large
Chest width			102			wide
Body depth			108			deep
Backline			105			strong
Rump length			113			long
Rump width			96			wide
Rump angle			102			sloped
Thurl position			107			in the centre
Rear legs side view			105			sickled
Hock quality			98			dry
Pasterns			107			strong
Hoof height			109			high
Fore udder length			116			long
Rear udder width			116			wide
Rear udder height			105			high
Central ligament			103			strong
Udder depth			106			high
Fore udder attachment			107			tight
Udder balance			96			inclined
Teat length			87			long
Teat thickness			79			thick
Front teat placement			116			close
Rear teat placement			108			close
Teat direction			107			inwards
Udder cleanness			103			clean

Free of: ARF, B2F, SDF, SMF, WEF



Bloomberg

346045

Born: 23.10.2017
DE 09 52587549

aAa 243615



♂ **BLOOMING** (♂ GLENN), (♀ BEVERLY)

♀ REHPRO (♂ PROHUVO)

10/9 10755 4.31 464 3.73 401

♀ REHLEIN (♂ HUCOS)

6/6 8308 4.15 345 3.83 318



Proof: ZAR / 04-2024

Brown Swiss

Bloomberg

TMI
116
92%

Type

Fitness

Longevity

Milk

MI 107 98%

Milk	Fat	Protein
+512 kg	-0.26 %	-0.04 %
	0 kg	+15 kg

Daughters	184
Herds	122

Cappa-Casein	BB
Beta-Casein	A2A2

Beef Performance

BI 91 82%

Daily net gain	95	86%
-----------------------	----	-----

Carcass percentage	99	71%
---------------------------	----	-----

Carcass grade	85	81%
----------------------	----	-----

Fitness

FIT 110 88%

Longevity	117	78%
Udder health	94	92%
Calving ease pat.	95	95%
Calving ease mat.	104	86%
Prod. increase	108	89%
Persistence	104	96%
Som. cell count	94	93%
Fertility mat.	109	80%
Milking speed	105	93%
Milking temperament	87	69%
Vitality	103	87%
Ecol. TMI	116	92%
Claw health index	102	78%

Type traits 82 Daughters

Trait	Trend	76	88	100	112	124	Index	Trend
Frame							110	
Rump							118	
Feet & Legs							117	
Udder							115	
Final Score							117	
Muscling	light						102	heavy
Height at cross	small						110	large
Chest width	shallow						110	deep
Body depth	shallow						106	deep
Backline	weak						104	strong
Rump length	short						110	long
Rump width	narrow						117	wide
Rump angle	ascending						106	sloped
Thurl position	in the back						107	in the centre
Hock angularity	straight						100	sickled
Hock develop.	swollen						115	dry
Pasterns	weak						103	strong
Foot angle	low angles						106	steep angles
Fore udder length	short						112	long
Rear udder width	narrow						102	wide
Rear udder height	low						100	high
Susp. ligament	weak						102	strong
Udder depth	deep						104	shallow
Fore udder att.	loose						112	tight
Udder balance	staged						105	inclined
Teat length	short						87	long
Teat thickness	thin						79	thick
Teat placem. (front)	wide						112	close
Teat placem. (rear)	wide						115	close
Teat direction (rear)	outwards						118	inwards
Udder cleanness	add. teats						96	clean udder



944, daughter of Bloomberg



Rehpro, dam of Bloomberg, 5. lac.

AG BLOWER

AT 81 5710 429 Born: 22.09.2015



Breed: Brown Swiss
Breeder: Pfeifer Michael, 6793 Gaschurn
HB (DE): 608632

Insemination success: +4%

Alpengenetik
Memmingen semen stock available #608632
Rinderzucht Tirol freely available
caRINDthia freely available
Vorarlberg Rind freely available

BLOOMING CH 120.082.568.808 91/106/+230-0,20+0,10	GLENN CH 120.023.664.460	GORDON	gGZW 91
ABIGAIL AT 47 4638 717 96/103/-584+0,42+0,30 +10/10 8956-4,94-4,01-801 7. 10697-4,67-3,65-890	BEVERLY CH 120.015.936.766	ARSENE	
	JOEL US 196.150	ACE	MW 98 FW 98 FIT 93 Conf. 115
	ATLANTIC AT 56 0301 116 +6/6 8851-5,13-3,89-799	DENVER	

BREEDING VALUES (03.04.2024)

PT

gGZW 91 (98)

GZW +0, MW +0, FW +0, FIT +0, EXT +1

MILK -228 -0,01 -11 +0,12 +1 MW 98 (99)

Section	Dau.	Mkg-F%-P%-FPkg	Herdø	Dau.	TD
100-d:	1275	2466-3,95-3,38-181	7912	1882	-
1st lact.:	1110	6550-4,10-3,56-502	7853	1494	8
2nd lact.:	573	7343-4,20-3,68-578	7950	911	8
3rd lact.:	109	7930-4,21-3,63-622	8214	371	5

BEEF FW 98 (90)

Net daily gain: 101 (92) **Carcass percentage:** 98 (80) **EUROP trade class:** 92 (89)

FITNESS ÖZW 98 (98) FIT 93 (97)

Longevity: 92 (94)	Udder health index: 95 (98)	Somatic cell count: 94 (99)	Mastitis: 99 (78)
Persistency: 94 (99)	Fertility index: 97 (96)	Claw health index: 97 (90)	Early fert. disorders: 94 (94)
Yield improvement: 112 (99)	Calving ease direct: 96 (99)	Calving ease maternal: 106 (97)	Cysts: 105 (93)
Milking speed: 90 (99)	Milking behaviour: 90 (93)	Calf vitality: 98 (96)	Milk fever: 99 (92)

CONFORMATION 867 daughters: 120 - 111 - 112 - 108 - Conf. 115 (99)

Merkmal	76	88	100	112	124	136
Frame						
Rump						
Feet & Legs						
Udder						
Final score						
Muscularity	101	weak				heavy
Cross height	125	small				large
Chest width	111	narrow				wide
Body depth	112	shallow				deep
Backline	113	weak				strong
Rump length	114	short				long
Rump width	111	narrow				wide
Rump angle	107	ascending				sloped
Thurl position	99	in the back				in the centre
Rear legs side view	94	straight				sickled
Hock quality	92	swollen				dry
Pasterns	113	weak				strong
Hoof height	114	low				high
Fore udder length	109	short				long
Rear udder width	106	narrow				wide
Rear udder height	107	low				high
Central ligament	88	weak				strong
Udder depth	110	deep				high
Fore udder attachment	102	loose				tight
Udder balance	95	staged				inclined
Teat length	78	short				long
Teat thickness	98	thin				thick
Front teat placement	115	wide				close
Rear teat placement	112	wide				close
Teat direction	109	outwards				inwards
Udder cleanness	106	add. teats				clean

Free of: ARF, B2F, SDF, SMF, WEF
Genetic charac.: Beta casein A2A2, Kappa casein BB



Dorian

435309

Born: 30.06.2016

DE 08 16474355

aAa 243651



♂ **DARIO** (♂ PAYSSLI), (♀ ALIBABA DAVO)

♀ **KESSY** (♂ ANIBAL)

6/6 9437 4.52 427 3.68 347

♀ **81376** (♂ VASIR)

5/5 11049 4.00 442 3.34 369



Wolfhard Schulze

Proof: ZAR / 04-2024

Brown Swiss

Dorian

TMI
124
96%

Udder

Components

Fitness

Milk

MI 107^{99%}

Milk	Fat	Protein
-12 kg	+0.15 %	+0.12 %
	+11 kg	+9 kg

Daughters	540
Herds	313

Cappa-Casein	BB
Beta-Casein	A2A2

Beef Performance

BI 115^{92%}

Daily net gain	114	94%
----------------	-----	-----

Carcass percentage	103	84%
--------------------	-----	-----

Carcass grade	104	88%
---------------	-----	-----

Fitness

FIT 116^{95%}

Longevity	115	88%
Udder health	121	96%
Calving ease pat.	99	98%
Calving ease mat.	104	94%
Prod. increase	99	97%
Persistence	94	98%
Som. cell count	121	97%
Fertility mat.	108	92%
Milking speed	99	97%
Milking temperament	105	86%
Vitality	103	94%
Ecol. TMI	119	96%
Claw health index	94	87%

Type traits 197 Daughters

Trait	Trend	76	88	100	112	124	Index	Trend
Frame							101	
Rump							103	
Feet & Legs							108	
Udder							120	
Final Score							113	
Muscling	light						98	heavy
Height at cross	small						108	large
Chest width	shallow						99	deep
Body depth	shallow						92	deep
Backline	weak						107	strong
Rump length	short						102	long
Rump width	narrow						97	wide
Rump angle	ascending						105	sloped
Thurl position	in the back						99	in the centre
Hock angularity	straight						104	sickled
Hock develop.	swollen						109	dry
Pasterns	weak						105	strong
Foot angle	low angles						105	steep angles
Fore udder length	short						102	long
Rear udder width	narrow						96	wide
Rear udder height	low						108	high
Susp. ligament	weak						103	strong
Udder depth	deep						121	shallow
Fore udder att.	loose						116	tight
Udder balance	staged						96	inclined
Teat length	short						86	long
Teat thickness	thin						71	thick
Teat placem. (front)	wide						114	close
Teat placem. (rear)	wide						110	close
Teat direction (rear)	outwards						117	inwards
Udder cleanness	add. teats						103	clean udder



Gina, daughter of Dorian



Hacker

343980

Born: 17.10.2008
DE 09 42089722

aAa 654123



♂ HURAY (♂ HUSSLI), (♀ LAURA)

♀ KONNI (♂ HUCOS)

5/5 9417 3.58 337 3.49 329

♀ KONNI (♂ SIMERL)

2/2 8489 4.16 354 3.62 307



Proof: ZAR / 04-2024

Brown Swiss

Hacker

TMI
112
99%

For heifers

Fitness

Feet & legs

Milk

MI 101 99%

Milk	Fat	Protein
+325 kg	-0.19 %	-0.10 %
	-2 kg	+3 kg

Daughters	8260
Herds	2325

Cappa-Casein	AB
Beta-Casein	A2A2

Beef Performance

BI 103 98%

Daily net gain	101	99%
----------------	-----	-----

Carcass percentage	100	95%
--------------------	-----	-----

Carcass grade	107	98%
---------------	-----	-----

Fitness

FIT 112 99%

Longevity	117	99%
Udder health	110	99%
Calving ease pat.	111	99%
Calving ease mat.	106	99%
Prod. increase	92	99%
Persistence	106	99%
Som. cell count	108	99%
Fertility mat.	103	99%
Milking speed	105	99%
Milking temperament	100	93%
Vitality	100	99%
Ecol. TMI	112	99%
Claw health index	99	96%

Type traits 2063 Daughters

Trait	Trend	76	88	100	112	124	Index	Trend
Frame							90	
Rump							96	
Feet & Legs							115	
Udder							112	
Final Score							105	
Muscling	light						106	heavy
Height at cross	small						93	large
Chest width	shallow						89	deep
Body depth	shallow						87	deep
Backline	weak						104	strong
Rump length	short						94	long
Rump width	narrow						81	wide
Rump angle	ascending						105	sloped
Thurl position	in the back						102	in the centre
Hock angularity	straight						95	sickled
Hock develop.	swollen						130	dry
Pasterns	weak						98	strong
Foot angle	low angles						95	steep angles
Fore udder length	short						96	long
Rear udder width	narrow						86	wide
Rear udder height	low						101	high
Susp. ligament	weak						101	strong
Udder depth	deep						112	shallow
Fore udder att.	loose						113	tight
Udder balance	staged						100	inclined
Teat length	short						97	long
Teat thickness	thin						89	thick
Teat placem. (front)	wide						110	close
Teat placem. (rear)	wide						110	close
Teat direction (rear)	outwards						109	inwards
Udder cleanness	add. teats						105	clean udder



Minka, daughter of Hacker, 4th lac.



Helena, daughter of Hacker

Jakarta

345840

Born: 10.10.2015
DE 09 50954498

aAa 561423

Progeny tested

Sexed semen available

♂ AG James (♂ Jaguar), (♀ Selina)

♀ Susi (♂ Huray)

6/5 8243 4.45 367 3.91 322

♀ Sybille (♂ Vasir)

5/5 11912 3.95 470 3.39 404



Proof: ZAR / 04-2024

Brown Swiss

Jakarta

TMI
116
92%

Longevity

Hoof health

Type

Milk

MI 110 ^{97%}

Milk	Fat	Protein
+395 kg	+0.02 %	-0.02 %
	+19 kg	+12 kg

Daughters	110
Herds	98

Cappa-Casein	BB
Beta-Casein	A2A2

Beef Performance

BI 99 ^{83%}

Daily net gain	98	87%
----------------	----	-----

Carcass percentage	104	74%
--------------------	-----	-----

Carcass grade	98	81%
---------------	----	-----

Fitness

FIT 104 ^{90%}

Longevity	114	81%
Udder health	101	92%
Calving ease pat.	102	99%
Calving ease mat.	107	93%
Prod. increase	117	93%
Persistence	104	95%
Som. cell count	104	92%
Fertility mat.	96	83%
Milking speed	108	93%
Milking temperament	96	68%
Vitality	96	96%
Ecol. TMI	118	94%
Claw health index	110	75%

Type traits 61 Daughters

Trait	Trend	76	88	100	112	124	Index	Trend
Frame							104	
Rump							104	
Feet & Legs							104	
Udder							113	
Final Score							111	
Muscling	light						117	heavy
Height at cross	small						95	large
Chest width	shallow						111	deep
Body depth	shallow						107	deep
Backline	weak						96	strong
Rump length	short						103	long
Rump width	narrow						99	wide
Rump angle	ascending						95	sloped
Thurl position	in the back						105	in the centre
Hock angularity	straight						97	sickled
Hock develop.	swollen						86	dry
Pasterns	weak						110	strong
Foot angle	low angles						99	steep angles
Fore udder length	short						110	long
Rear udder width	narrow						97	wide
Rear udder height	low						100	high
Susp. ligament	weak						105	strong
Udder depth	deep						105	shallow
Fore udder att.	loose						107	tight
Udder balance	staged						114	inclined
Teat length	short						96	long
Teat thickness	thin						101	thick
Teat placem. (front)	wide						108	close
Teat placem. (rear)	wide						121	close
Teat direction (rear)	outwards						116	inwards
Udder cleanness	add. teats						100	clean udder



Natalie, daughter of Jakarta



Adriana EX93, pat. halfsister of JAKARTA, 6th lac.

Jucator

345165

Born: 21.12.2013
DE 09 48940328

aAa 432651



♂ AG JUKEBOX (♂ JUHUS), (♀ KALINA)

♀ LICKA (♂ HURAY)

8/7 10792 4.18 451 3.63 392

♀ LIA (♂ ENSIGN ET)

8/8 10297 4.02 414 3.55 366



Proof: ZAR / 04-2024

Brown Swiss

Jucator

TMI
113
97%

Udder

Udder health

Components

Milk

MI 108 ^{99%}

Milk	Fat	Protein
+17 kg	+0.19 %	+0.10 %
	+16 kg	+8 kg

Daughters	1545
Herds	620

Cappa-Casein	BB
Beta-Casein	A2A2

Beef Performance

BI 109 ^{94%}

Daily net gain	106	95%
-----------------------	-----	-----

Carcass percentage	111	87%
---------------------------	-----	-----

Carcass grade	101	93%
----------------------	-----	-----

Fitness

FIT 102 ^{96%}

Longevity	109	92%
Udder health	116	97%
Calving ease pat.	107	99%
Calving ease mat.	93	96%
Prod. increase	100	97%
Persistence	89	99%
Som. cell count	116	98%
Fertility mat.	93	93%
Milking speed	119	98%
Milking temperament	84	80%
Vitality	92	96%
Ecol. TMI	110	97%
Claw health index	107	86%

Type traits 304 Daughters

Trait	Trend	76	88	100	112	124	Index	Trend
Frame							83	
Rump							70	
Feet & Legs							104	
Udder							117	
Final Score							100	
Muscling	light						101	heavy
Height at cross	small						85	large
Chest width	shallow						86	deep
Body depth	shallow						90	deep
Backline	weak						84	strong
Rump length	short						81	long
Rump width	narrow						74	wide
Rump angle	ascending						76	sloped
Thurl position	in the back						90	in the centre
Hock angularity	straight						88	sickled
Hock develop.	swollen						107	dry
Pasterns	weak						88	strong
Foot angle	low angles						100	steep angles
Fore udder length	short						102	long
Rear udder width	narrow						95	wide
Rear udder height	low						106	high
Susp. ligament	weak						83	strong
Udder depth	deep						114	shallow
Fore udder att.	loose						115	tight
Udder balance	staged						119	inclined
Teat length	short						89	long
Teat thickness	thin						87	thick
Teat placem. (front)	wide						106	close
Teat placem. (rear)	wide						104	close
Teat direction (rear)	outwards						111	inwards
Udder cleanness	add. teats						107	clean udder



Uganda, daughter of Jucator



Ursula, daughter of Jucator (2nd lac.)

Payssli

435070 GF: B2C

Born: 28.08.2005

DE 08 13034326

aAa 243165



♂ PAYOFF *TM (♂ PRELUDE *TA), (♀ COLL POLLY)

♀ BOUNTY (♂ HUSSLI)

6/5 10571 4.53 479 3.76 397

♀ BOUNCE (♂ EVEN *TM)



Wolfhard Schulze

Proof: ZAR / 04-2024

Brown Swiss

Payssli

TMI
106
99%

Udder

Rump

Frame

Milk

MI 102 99%

Milk	Fat	Protein
+168 kg	-0.05 %	-0.03 %
	+3 kg	+4 kg

Daughters	18455
Herds	3946

Cappa-Casein	BB
Beta-Casein	A1A2

Beef Performance

BI 100 99%

Daily net gain	103	99%
-----------------------	-----	-----

Carcass percentage	100	96%
---------------------------	-----	-----

Carcass grade	90	99%
----------------------	----	-----

Fitness

FIT 103 99%

Longevity	99	99%
Udder health	107	99%
Calving ease pat.	95	99%
Calving ease mat.	109	99%
Prod. increase	112	99%
Persistence	98	99%
Som. cell count	105	99%
Fertility mat.	106	99%
Milking speed	99	99%
Milking temperament	92	98%
Vitality	86	99%
Ecol. TMI	106	99%
Claw health index	95	98%

Type traits 7612 Daughters

Trait	Trend	76	88	100	112	124	Index	Trend
Frame							109	
Rump							108	
Feet & Legs							98	
Udder							115	
Final Score							112	
Muscling	light						100	heavy
Height at cross	small						112	large
Chest width	shallow						105	deep
Body depth	shallow						105	deep
Backline	weak						97	strong
Rump length	short						113	long
Rump width	narrow						102	wide
Rump angle	ascending						100	sloped
Thurl position	in the back						104	in the centre
Hock angularity	straight						98	sickled
Hock develop.	swollen						100	dry
Pasterns	weak						91	strong
Foot angle	low angles						101	steep angles
Fore udder length	short						104	long
Rear udder width	narrow						112	wide
Rear udder height	low						111	high
Susp. ligament	weak						105	strong
Udder depth	deep						108	shallow
Fore udder att.	loose						107	tight
Udder balance	staged						97	inclined
Teat length	short						100	long
Teat thickness	thin						96	thick
Teat placem. (front)	wide						103	close
Teat placem. (rear)	wide						99	close
Teat direction (rear)	outwards						105	inwards
Udder cleanness	add. teats						101	clean udder



Prinzess, daughter of Payssli



Hilde, daughter of Payssli

Piccard

435510

Born: 04.08.2020

DE 08 17671356

aAa 156423



♂ Piano (♂ Piero), (♀ Las Vegas)

♀ Heike (♂ Huvi)

6/5 9128 4.67 426 3.97 362

♀ Hillery (♂ Huray)

10/10 9704 3.95 384 3.73 362



Proof: ZAR / 04-2024

Brown Swiss

Piccard

TMI
133
77%

Udder

Fat %

Fitness

Milk

MI 122 ^{85%}

Milk	Fat	Protein
+583 kg	+0.18 %	+0.03 %
	+39 kg	+24 kg

Daughters -
Herds -

Cappa-Casein	BB
Beta-Casein	A2A2

Beef Performance

BI 85 ^{68%}

Daily net gain 93 ^{69%}

Carcass percentage 90 ^{68%}

Carcass grade 81 ^{64%}

Fitness

FIT 111 ^{78%}

Longevity	108	66%
Udder health	107	79%
Calving ease pat.	105	94%
Calving ease mat.	106	76%
Prod. increase	99	69%
Persistence	108	76%
Som. cell count	106	76%
Fertility mat.	102	66%
Milking speed	97	80%
Milking temperament	105	53%
Vitality	112	81%
Ecol. TMI	120	82%
Claw health index	108	64%

Type traits - Daughters

Trait	Trend	76	88	100	112	124	Index	Trend
Frame							108	
Rump							106	
Feet & Legs							104	
Udder							112	
Final Score							111	
Muscling	light						87	heavy
Height at cross	small						111	large
Chest width	shallow						101	deep
Body depth	shallow						111	deep
Backline	weak						94	strong
Rump length	short						113	long
Rump width	narrow						104	wide
Rump angle	ascending						100	sloped
Thurl position	in the back						100	in the centre
Hock angularity	straight						94	sickled
Hock develop.	swollen						95	dry
Pasterns	weak						100	strong
Foot angle	low angles						106	steep angles
Fore udder length	short						113	long
Rear udder width	narrow						117	wide
Rear udder height	low						107	high
Susp. ligament	weak						96	strong
Udder depth	deep						109	shallow
Fore udder att.	loose						109	tight
Udder balance	staged						111	inclined
Teat length	short						88	long
Teat thickness	thin						97	thick
Teat placem. (front)	wide						112	close
Teat placem. (rear)	wide						108	close
Teat direction (rear)	outwards						108	inwards
Udder cleanness	add. teats						103	clean udder



Heike, dam of Piccard, 5th lac.

AG VÄSTERAS

DE 09 56224252 Born: 18.09.2020



Breed: Brown Swiss
Breeder: Schlecker Martin, 89296 Osterberg/DE
HB (DE): 347150

Insemination success: -2%

Alpengenetik
Memmingen semen stock available #347150
Rinderzucht Tirol freely available #347150

AG VASELINO DE 09 53325777 125/121/+644+0,23-0,02	VASSLI DE 08 14660364 1304 DE 09 49576055	VASIR FEUERSTEIN	gZW 136
1561 DE 09 53325842 127/113/+351-0,01+0,09 3/2 8976-4,42-4,14-769 2. 9023-4,59-4,18-791	AG VERDI DE 09 46663620 1318 DE 09 49576069 7/6 10286-4,01-3,63-786	VERSACE GS HIMALAYA	

BREEDING VALUES (03.04.2024)

GYB

gZW 136 (77)

GZW -1, MW -1, FW +0, FIT +0, EXT +0

MILK +550 +0,18 +38 +0,04 +23 **MW 121 (85)**

BEEF **FW 93 (69)**

Net daily gain: 94 (70) **Carcass percentage:** 99 (70) **EUROP trade class:** 96 (66)

FITNESS **ÖZW 128 (83)** **FIT 116 (79)**

Longevity: 120 (68)	Udder health index: 116 (80)	Somatic cell count: 113 (76)	Mastitis: 113 (55)
Persistence: 115 (76)	Fertility index: 98 (68)	Claw health index: 102 (64)	Early fert. disorders: 104 (62)
Yield improvement: 113 (70)	Calving ease direct: 94 (97)	Calving ease maternal: 107 (85)	Cysts: 104 (61)
Milking speed: 99 (80)	Milking behaviour: 98 (52)	Calf vitality: 100 (90)	Milk fever: -

CONFORMATION

0 daughters: 100 - 108 - 108 - 116 - Conf. 111 (77)

Merkmal	Score	Qualitative	76	88	100	112	124	136	Qualitative
Frame	100								
Rump	108								
Feet & Legs	108								
Udder	116								
Final score	111								
Muscularity	111	weak							heavy
Cross height	101	small							large
Chest width	102	narrow							wide
Body depth	98	shallow							deep
Backline	91	weak							strong
Rump length	103	short							long
Rump width	105	narrow							wide
Rump angle	93	ascending							sloped
Thurl position	103	in the back							in the centre
Rear legs side view	92	straight							sickled
Hock quality	100	swollen							dry
Pasterns	109	weak							strong
Hoof height	101	low							high
Fore udder length	99	short							long
Rear udder width	102	narrow							wide
Rear udder height	113	low							high
Central ligament	111	weak							strong
Udder depth	113	deep							high
Fore udder attachment	113	loose							tight
Udder balance	112	staged							inclined
Teat length	97	short							long
Teat thickness	92	thin							thick
Front teat placement	95	wide							close
Rear teat placement	108	wide							close
Teat direction	115	outwards							inwards
Udder cleanness	105	add. teats							clean

Free of: ARF, B2F, SDF, SMF, WEF
Genetic charac.: Beta casein A2A2, Kappa casein BB



COW FAMILY



dam

1561 DE 09 53325842

(in 2. lact.)

Breeder: Schlecker Martin, Osterberg



cow family

r. M 1561 l. MM 1318

Breeder: Schlecker Martin, Osterberg
rechts Mutter 1561, links Großmutter 1318



Veles Pp*

346640

Born: 20.10.2018

DE 09 54182706

aAa 423651



♂ Vidal P*S (♂ Ag Viper Pp*), (♀ Pauli)

♀ 1413 (♂ Ag Vobis)

4/4 12606 4.23 534 3.54 447

♀ Monice (♂ Jupaz)

10/10 11371 4.16 473 3.53 401



Proof: ZAR / 04-2024

Brown Swiss

Veles Pp*

TMI
122
89%

Longevity

Fitness

Type

Milk

MI 108 ^{96%}

Milk	Fat	Protein
+135 kg	+0.08 %	+0.06 %
	+12 kg	+10 kg

Daughters	170
Herds	114

Cappa-Casein	AB
Beta-Casein	A1A2

Beef Performance

BI 100 ^{83%}

Daily net gain	104	87%
-----------------------	-----	-----

Carcass percentage	98	74%
---------------------------	----	-----

Carcass grade	95	82%
----------------------	----	-----

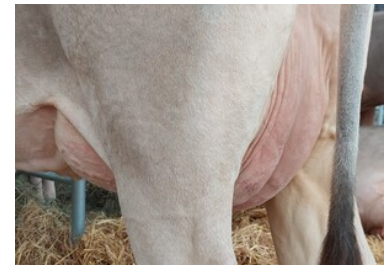
Fitness

FIT 115 ^{84%}

Longevity	123	70%
Udder health	109	90%
Calving ease pat.	94	97%
Calving ease mat.	101	88%
Prod. increase	107	73%
Persistence	90	93%
Som. cell count	108	90%
Fertility mat.	107	73%
Milking speed	77	92%
Milking temperament	107	62%
Vitality	114	91%
Ecol. TMI	116	90%
Claw health index	104	67%

Type traits 48 Daughters

Trait	Trend	76	88	100	112	124	Index	Trend
Frame							101	
Rump							92	
Feet & Legs							115	
Udder							112	
Final Score							109	
Muscling	light						85	heavy
Height at cross	small						105	large
Chest width	shallow						94	deep
Body depth	shallow						103	deep
Backline	weak						99	strong
Rump length	short						102	long
Rump width	narrow						99	wide
Rump angle	ascending						89	sloped
Thurl position	in the back						90	in the centre
Hock angularity	straight						105	sickled
Hock develop.	swollen						119	dry
Pasterns	weak						103	strong
Foot angle	low angles						104	steep angles
Fore udder length	short						102	long
Rear udder width	narrow						102	wide
Rear udder height	low						110	high
Susp. ligament	weak						102	strong
Udder depth	deep						106	shallow
Fore udder att.	loose						101	tight
Udder balance	staged						108	inclined
Teat length	short						85	long
Teat thickness	thin						103	thick
Teat placem. (front)	wide						111	close
Teat placem. (rear)	wide						123	close
Teat direction (rear)	outwards						116	inwards
Udder cleanness	add. teats						100	clean udder



Udder of a Veles Pp-daughter in France



1413, dam of Veles Pp

Veritas

345570

Born: 02.01.2015
DE 09 50369353

aAa 642153



♂ **AG VERDI** (♂ **VERSACE**), (♀ **IDRO**)
♀ **DELIA** (♂ **VASIR**)
8/7 10313 3.81 393 3.46 357
♀ **DOBA** (♂ **PAYBOY**)
4/4 8054 4.51 363 3.64 293



Proof: ZAR / 04-2024

Brown Swiss

Veritas

TMI
119
92%

Components

Rump

Calving ease mat.

Milk

MI 113 ^{97%}

Milk	Fat	Protein
+411 kg	+0.04 %	+0.03 %
	+21 kg	+18 kg

Daughters	192
Herds	156

Cappa-Casein	AB
Beta-Casein	A2A2

Beef Performance

BI 98 ^{88%}

Daily net gain	98	90%
-----------------------	----	-----

Carcass percentage	95	77%
---------------------------	----	-----

Carcass grade	103	86%
----------------------	-----	-----

Fitness

FIT 103 ^{90%}

Longevity	102	81%
Udder health	101	93%
Calving ease pat.	94	97%
Calving ease mat.	116	90%
Prod. increase	86	92%
Persistence	98	95%
Som. cell count	102	93%
Fertility mat.	105	83%
Milking speed	104	94%
Milking temperament	96	69%
Vitality	94	92%
Ecol. TMI	107	93%
Claw health index	96	76%

Type traits 68 Daughters

Trait	Trend	76	88	100	112	124	Index	Trend
Frame							106	
Rump							112	
Feet & Legs							108	
Udder							99	
Final Score							105	
Muscling	light						102	heavy
Height at cross	small						108	large
Chest width	shallow						104	deep
Body depth	shallow						104	deep
Backline	weak						92	strong
Rump length	short						101	long
Rump width	narrow						120	wide
Rump angle	ascending						103	sloped
Thurl position	in the back						97	in the centre
Hock angularity	straight						91	sickled
Hock develop.	swollen						90	dry
Pasterns	weak						115	strong
Foot angle	low angles						101	steep angles
Fore udder length	short						108	long
Rear udder width	narrow						108	wide
Rear udder height	low						99	high
Susp. ligament	weak						91	strong
Udder depth	deep						96	shallow
Fore udder att.	loose						96	tight
Udder balance	staged						95	inclined
Teat length	short						98	long
Teat thickness	thin						117	thick
Teat placem. (front)	wide						94	close
Teat placem. (rear)	wide						95	close
Teat direction (rear)	outwards						94	inwards
Udder cleanness	add. teats						100	clean udder



Evelyn, daughter of Veritas

A2A2

Vindox P*S

347520

Born: 06.12.2021
DE 09 57215500



♂ **AG Vindus P*S** (♂ Vipro Pp*), (♀ Vronis)
 ♀ **Beane** (♂ **AG Vox**)
 5/4 11123 4.52 503 3.59 400
 ♀ **Blume** (♂ **Hegall**)
 3/3 8898 4.22 375 3.75 334



Proof: ZAR / 04-2024

Brown Swiss

Vindox P*S

TMI
130
71%

Milk

Components

Fertility

Milk

MI 126 80%

Milk +679 kg
Fat +0.19 %
Protein +0.05 %
 +45 kg +29 kg

Daughters -
Herds -

Cappa-Casein AA
Beta-Casein A2A2

Beef Performance

BI 99 59%

Daily net gain 102 60%

Carcass percentage 94 55%

Carcass grade 95 55%

Fitness

FIT 102 73%

Longevity 101 62%
Udder health 103 75%
Calving ease pat. 100 77%
Calving ease mat. 105 65%
Prod. increase 99 68%
Persistence 86 70%
Som. cell count 100 71%
Fertility mat. 106 60%
Milking speed 103 75%
Milking temperament 99 46%
Vitality 102 63%
Ecol. TMI 115 77%
Claw health index 108 57%

Type traits - Daughters

Trait	Trend	76	88	100	112	124	Index	Trend
Frame							102	
Rump							101	
Feet & Legs							107	
Udder							107	
Final Score							106	
Muscling	light						93	heavy
Height at cross	small						104	large
Chest width	shallow						98	deep
Body depth	shallow						106	deep
Backline	weak						97	strong
Rump length	short						98	long
Rump width	narrow						100	wide
Rump angle	ascending						111	sloped
Thurl position	in the back						106	in the centre
Hock angularity	straight						97	sickled
Hock develop.	swollen						92	dry
Pasterns	weak						111	strong
Foot angle	low angles						111	steep angles
Fore udder length	short						110	long
Rear udder width	narrow						107	wide
Rear udder height	low						109	high
Susp. ligament	weak						96	strong
Udder depth	deep						100	shallow
Fore udder att.	loose						103	tight
Udder balance	staged						100	inclined
Teat length	short						100	long
Teat thickness	thin						102	thick
Teat placem. (front)	wide						99	close
Teat placem. (rear)	wide						94	close
Teat direction (rear)	outwards						96	inwards
Udder cleanness	add. teats						96	clean udder



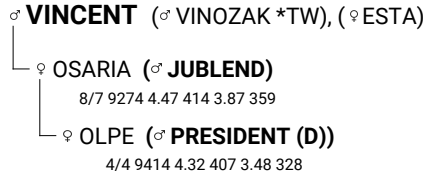
Beane, dam of Vindox P*S, 4th lac.

Vintage

344620

Born: 26.07.2011
DE 09 46833089

aAa 234165



Proof: ZAR / 04-2024

Brown Swiss

Vintage

TMI
113
99%

Milk

Rump

Cow family

Milk

MI 115 99%

Milk	Fat	Protein
+571 kg	-0.01 %	+0.01 %
	+24 kg	+21 kg

Daughters	6062
Herds	2108

Cappa-Casein	AB
Beta-Casein	A2A2

Beef Performance

BI 98 98%

Daily net gain	97	98%
-----------------------	----	-----

Carcass percentage	98	95%
---------------------------	----	-----

Carcass grade	105	98%
----------------------	-----	-----

Fitness

FIT 92 99%

Longevity	95	99%
Udder health	97	99%
Calving ease pat.	103	99%
Calving ease mat.	101	99%
Prod. increase	105	99%
Persistence	102	99%
Som. cell count	99	99%
Fertility mat.	88	99%
Milking speed	99	99%
Milking temperament	112	95%
Vitality	104	99%
Ecol. TMI	108	99%
Claw health index	101	96%

Type traits 1232 Daughters

Trait	Trend	76	88	100	112	124	Index	Trend
Frame							98	
Rump							109	
Feet & Legs							102	
Udder							102	
Final Score							102	
Muscling	light						101	heavy
Height at cross	small						95	large
Chest width	shallow						93	deep
Body depth	shallow						95	deep
Backline	weak						107	strong
Rump length	short						106	long
Rump width	narrow						107	wide
Rump angle	ascending						107	sloped
Thurl position	in the back						109	in the centre
Hock angularity	straight						105	sickled
Hock develop.	swollen						89	dry
Pasterns	weak						103	strong
Foot angle	low angles						113	steep angles
Fore udder length	short						100	long
Rear udder width	narrow						92	wide
Rear udder height	low						99	high
Susp. ligament	weak						108	strong
Udder depth	deep						99	shallow
Fore udder att.	loose						95	tight
Udder balance	staged						94	inclined
Teat length	short						87	long
Teat thickness	thin						106	thick
Teat placem. (front)	wide						101	close
Teat placem. (rear)	wide						102	close
Teat direction (rear)	outwards						101	inwards
Udder cleanness	add. teats						95	clean udder



Corinna, daughter of Vintage



Cora, daughter of Vintage